

|  |                        |   |
|--|------------------------|---|
| WAAS<br>CH <b>82316</b><br><b>W16A</b> | APP CRS<br><b>165°</b> | Rwy Ldg <b>5070</b><br>TDZE <b>15</b><br>Apt Elev <b>15</b> |
|--|------------------------|---|

# RNAV (GPS) RWY 16

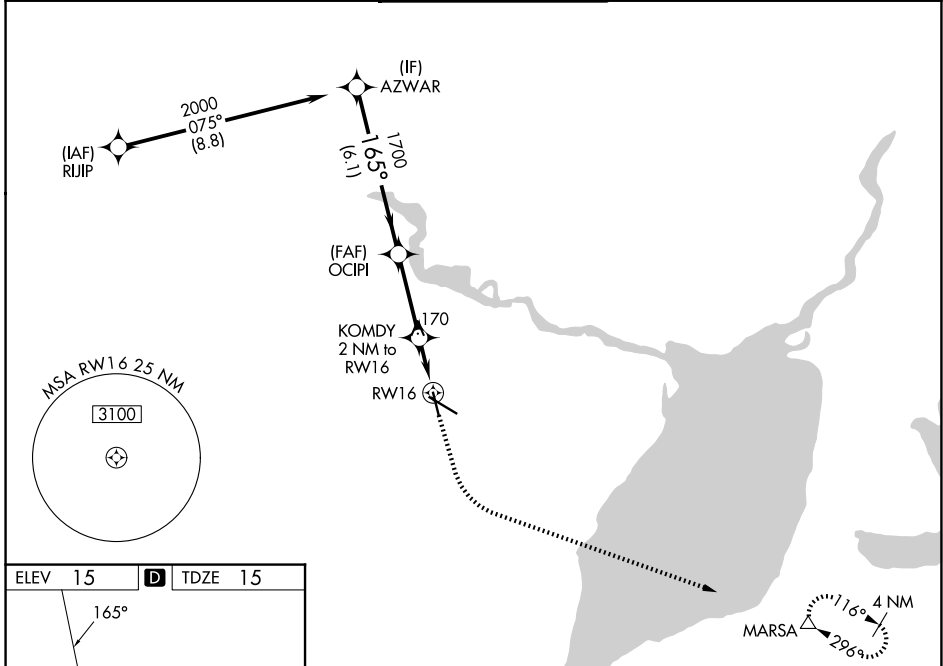
JACK BROOKS RGNL (BPT)

RNP APCH - GPS.

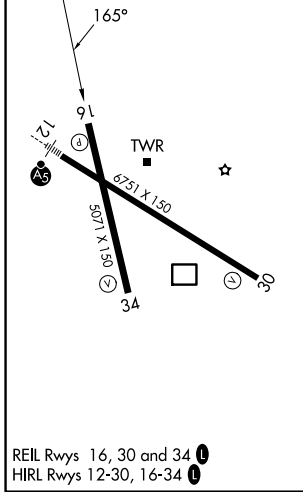
▼ For uncompensated Baro-VNAV systems, LNAV/VNAV NA below -4°C or above 54°C.  
 ▲ Baro-VNAV and VDP NA when using Orange County altimeter setting. Rwy 16 helicopter visibility reduction below 3/4 SM NA. When local altimeter setting not received, use Orange County altimeter setting; increase LPV DA to 307 feet and all visibilities 1/8 SM; increase LNAV/VNAV DA to 363 feet and all visibilities 1/8 SM; increase all MDAs 40 feet and LNAV visibility Cat C/D/E 1/4 SM.

MISSED APPROACH: Climb to 500 then climbing left turn to 3000 direct MARSAs and hold.

|                      |                                       |   |                          |                         |
|----------------------|---------------------------------------|---|--------------------------|-------------------------|
| ATIS<br><b>126.3</b> | HOUSTON APP CON<br><b>121.3 377.1</b> | BEAUMONT TOWER *<br><b>119.5 (CTAF) 0</b> | GND CON<br><b>124.85</b> | UNICOM<br><b>122.95</b> |
|----------------------|---------------------------------------|---|--------------------------|-------------------------|



|         |          |         |
|---------|----------|---------|
| ELEV 15 | <b>D</b> | TDZE 15 |
|---------|----------|---------|



REIL Rwy 16, 30 and 34 **0**  
 HIRL Rwy 12-30, 16-34 **0**

|              |        |                |                  |                 |   |
|--------------|--------|----------------|------------------|-----------------|---|
|              | 500    | 3000           | MARSAs           |                 |   |
|              | ↑      | ↶              | △                |                 |   |
| AZWAR        | OCIPI  | KOMDY          | MARSAs           |                 |   |
| 2000         | 1700   | 2 NM to RWY 16 | 1.1 NM to RWY 16 |                 |   |
| GP 3.00°     | 165°   | 1700           | 700              |                 |   |
| TCH 53       | 1700   | 0.9 NM         | 1.1 NM           |                 |   |
|              | 6.1 NM | 3.1 NM         | 0.9 NM           |                 |   |
| CATEGORY     | A      | B              | C                | D               | E |
| LPV DA       |        | 275-3/4        | 260 (300-3/4)    |                 |   |
| LNAV/VNAV DA |        | 331-7/8        | 316 (400-7/8)    |                 |   |
| LNAV MDA     | 420-1  | 405 (500-1)    | 420-1 1/8        | 405 (500-1 1/8) |   |

SC-5, 16 APR 2026 to 14 MAY 2026

SC-5, 16 APR 2026 to 14 MAY 2026