


LOC/DME I-MPV 108.7 Chan 24	APP CRS 168°	Rwy Ldg TDZE 5000 1135	Apt Elev 1166
--	------------------------	--	-------------------------

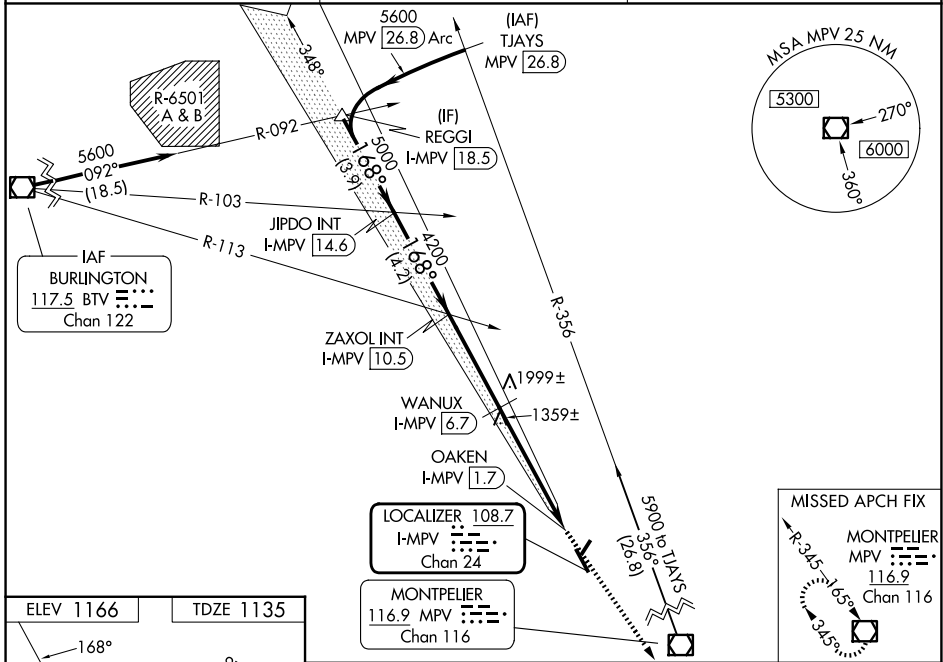
ILS or LOC RWY 17

EDWARD F KNAPP STATE (MPV)

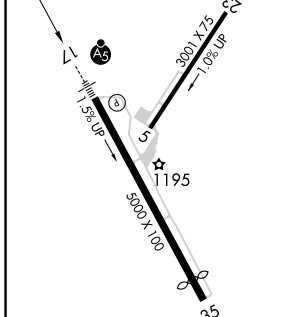
NA Inoperative table does not apply to S-LOC 17 Cats A and B. When local altimeter setting not received, procedure NA. Rwy 17 helicopter visibility reduction below 3/4 SM
-19°C NA. Circling Rwy 5, 35 NA at night. For inoperative MALSRS, increase S-ILS 17 all Cats visibility to 1 1/8 mile and WANUX fix minimums S-LOC 17 Cats A/B visibility to 1 mile and Cats C/D visibility to 1 1/8 mile.

MALSRS

MISSED APPROACH: Climb to 5200 direct MPV VOR/DME and hold, continue climb-hold to 5200.

ASOS 132.675	BOSTON CENTER 135.7 282.2	UNICOM 122.8 (CTAF)
------------------------	-------------------------------------	-------------------------------



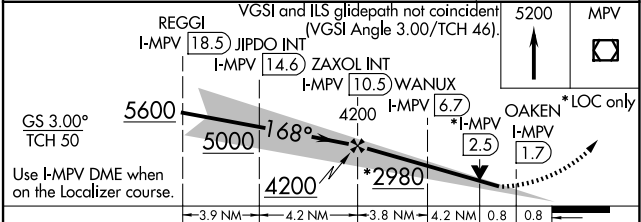
ELEV 1166	TDZE 1135
-----------	-----------



REIL Rwy 35
 MIRL Rwy 5-23
 MIRL Rwy 17-35

FAF to MAP 8.8 NM

Knots	60	90	120	150	180
Min:Sec	8:48	5:52	4:24	3:31	2:56



CATEGORY	A	B	C	D
S-ILS 17	1486-3/4 351 (400-3/4)			
S-LOC 17	2980-1 1/4 1845 (1900-1 1/4)	2980-1 1/2 1845 (1900-1 1/2)	2980-3	1845 (1900-3)
CIRCLING	2980-1 1/4 1814 (1900-1 1/4)	2980-1 1/2 1814 (1900-1 1/2)	2980-3	1814 (1900-3)
WANUX FIX MINIMUMS				
S-LOC 17	1660-3/4	525 (500-3/4)	1660-1 1/4	525 (500-1 1/4)
CIRCLING	1980-1 1/4	814 (900-1 1/4)	2700-3 1534 (1600-3)	2920-3 1754 (1800-3)

NE-1, 16 APR 2026 to 14 MAY 2026

NE-1, 16 APR 2026 to 14 MAY 2026