

LOC/DME I-RTS <b>111.9</b> Chan 56	APP CRS <b>318°</b>	Rwy Ldg TDZE <b>7800</b> <b>5045</b> Api Elev <b>5050</b>
--	------------------------	---

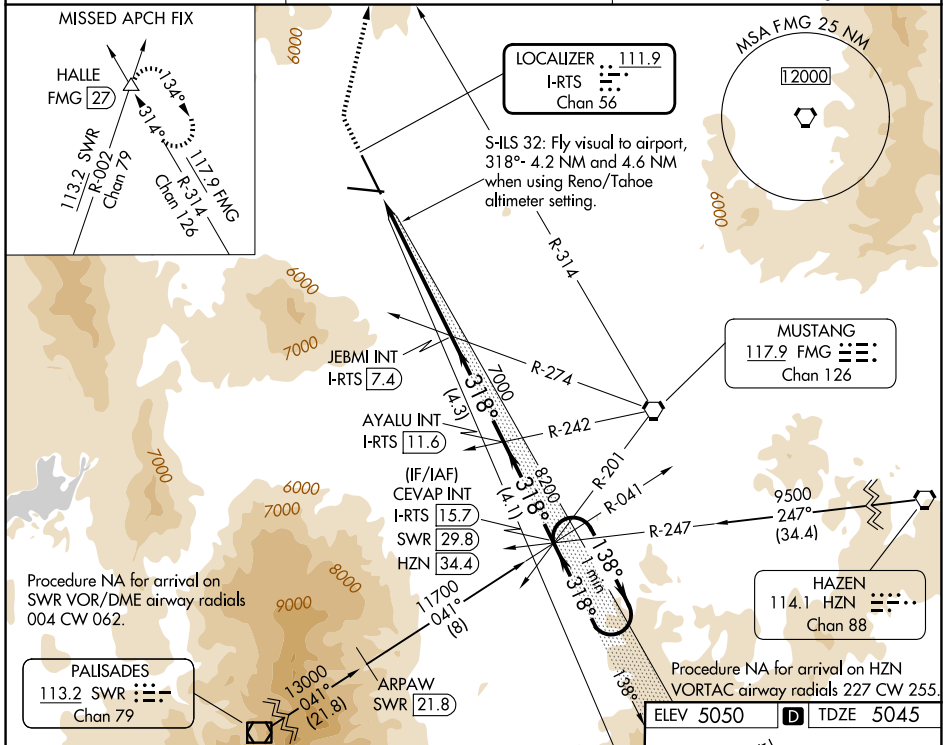
# ILS or LOC RWY 32

RENO/STEAD (RTS)

**NA** Inoperative table does not apply. Procedure NA at night. When local altimeter setting not received, use Reno/Tahoe Intl altimeter setting and increase all DA/MDA 120 feet. VDP NA when using Reno/Tahoe Intl altimeter setting. Circling NA for Cat D southwest of Rwy 14-32.

**MALSR** MISSED APPROACH: Climb to 6740 then climbing right turn to 14000 on heading 356° and FMG VORTAC R-314 to HALLE INT/FMG 27 DME and hold, continue climb-in-hold to 14000.

AWOS-3 <b>135.175</b>	NORCAL APP CON <b>126.3 353.9</b>	UNICOM <b>122.7 (CTAF)</b>
--------------------------	--------------------------------------	-------------------------------



6740 14000 FMG HALLE Use I-RTS DME when on the localizer course.

↑ hdg R-314 △

S-ILS 32: Fly visual to airport, 318°- 4.2 NM and 4.6 NM when using Reno/Tahoe altimeter setting.

JEBMI INT I-RTS 7.4

AYALU INT I-RTS 11.6

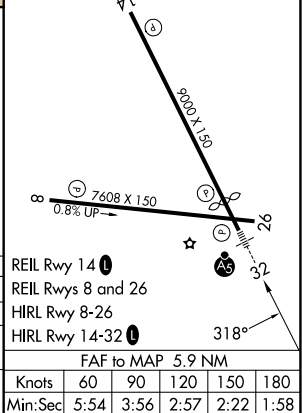
CEVAP INT I-RTS 15.7 SWR 29.8 HZN 34.4

One Minute Holding Pattern

318° 138° 9400

8200 GS 3.00° TCH 40

5.1 NM 0.8 4.3 NM 4.1 NM



CATEGORY	A	B	C	D
S-ILS 32	6425-3 1380 (1400-3)			
S-LOC 32	6720-1¼ 1675 (1700-1¼)	6720-1½ 1675 (1700-1½)	6720-3	1675 (1700-3)
CIRCLING	6720-1¼ 1670 (1700-1¼)	6720-1½ 1670 (1700-1½)	6720-3	1670 (1700-3)

FAF to MAP 5.9 NM					
Knots	60	90	120	150	180
Min:Sec	5:54	3:56	2:57	2:22	1:58

SW-4, 16 APR 2026 to 14 MAY 2026

SW-4, 16 APR 2026 to 14 MAY 2026