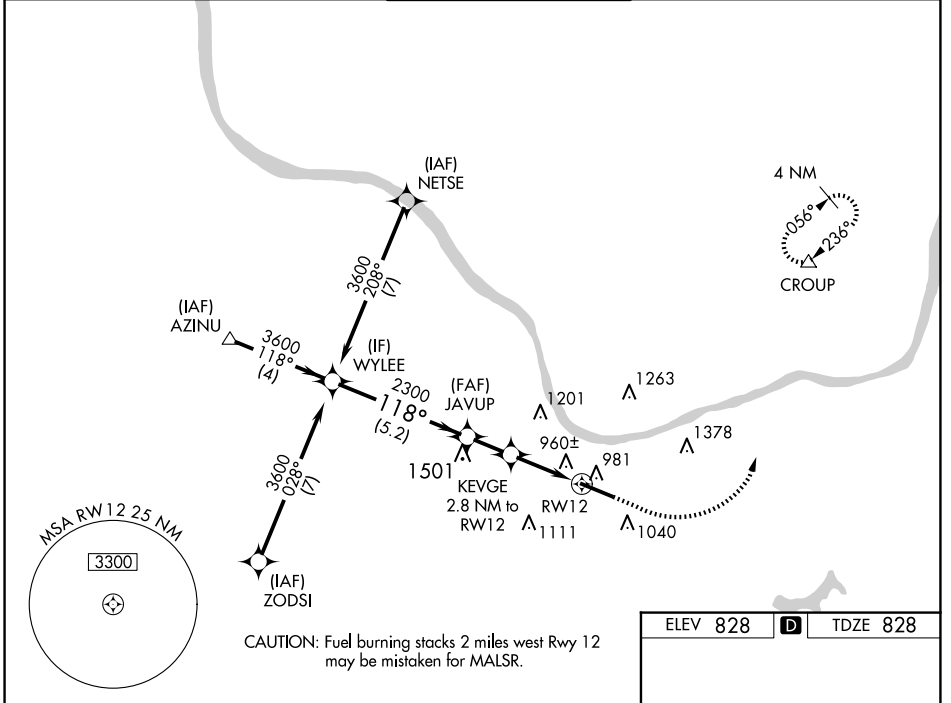


WAAS CH 45699 W12A	APP CRS 118°	Rwy Ldg TDZE Apt Elev	6516 828 828
--	------------------------	-----------------------------	---

RNAV (GPS) RWY 12

TRI-STATE/MILTON J FERGUSON FLD (HTS)

RNP APCH - GPS.		MALSR 	MISSED APPROACH: Climb to 1700 then climbing left turn to 4000 direct CROUP and hold, continue to climb-in-hold to 4000.	
For uncompensated Baro-VNAV systems, LNAV/VNAV NA below -14°C or above 54°C. For inop ALS, increase LNAV/VNAV all Cats visibility to RVR 4500. * RVR 1800 authorized with use of FD or AP or HUD to DA.				
ATIS 125.2	HUNTINGTON APP CON 119.75 270.1	HUNTINGTON TOWER 118.5 270.1	GND CON 121.9	CLNC DEL 118.05



NE-4, 16 APR 2026 to 14 MAY 2026

NE-4, 16 APR 2026 to 14 MAY 2026

ELEV 828	D	TDZE 828
----------	----------	----------

WYLEE 3600 GP 3.00° TCH 56	JAVUP 2300 1760	KEVGE 2.8 NM to RWY12 1.1 NM to RWY12	RWY12 1.1 NM
5.2 NM	1.7 NM	1.7 NM	1.1 NM

CATEGORY LPV DA* LNAV/VNAV DA LNAV MDA CIRCLING	A 1300-1 472 (500-1)	B 1028/24 1121/24 392 (400-½) 1380-1 552 (600-1)	C 200 (200-½) 293 (300-½) 1220/35 692 (700-2)	D 392 (400-⅝) 1740-3 912 (1000-3)
---	----------------------------	---	---	--

REIL Rwy 30	HIRL Rwy 12-30
-------------	----------------