

WAAS CH <b>97435</b> <b>W17A</b>	APP CRS <b>171°</b>	Rwy Idg TDZE Apt Elev	<b>6400</b> <b>3991</b> <b>3991</b>
--	------------------------	-----------------------------	---

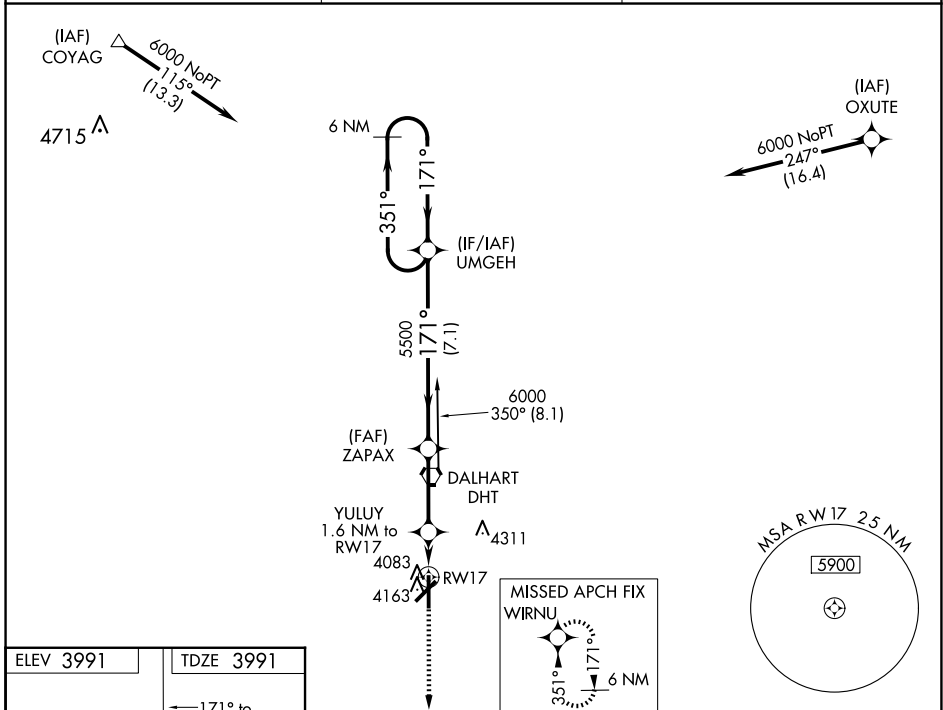
# RNAV (GPS) RWY 17

DALHART MUNI (DHT)

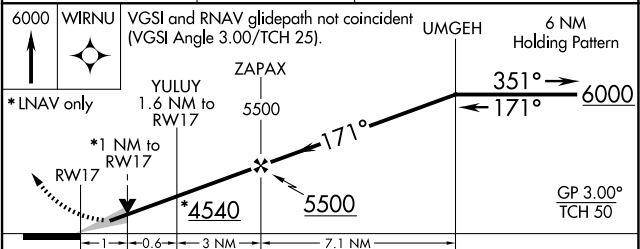
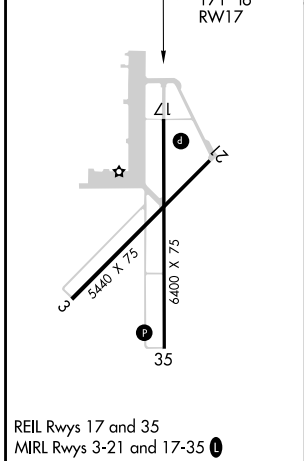
For uncompensated Baro-VNAV systems, LNAV/VNAV NA below -16°C (4°F) or above 51°C (124°F). Circling NA west of Rwy 17-35. DME/DME RNP-0.3 NA.

MISSED APPROACH: Climb to 6000 direct WIRNU and hold.

ASOS <b>134.075</b>	ALBUQUERQUE CENTER <b>127.85 285.475</b>	UNICOM <b>122.95 (CTAF)</b>
------------------------	---	--------------------------------



ELEV 3991	TDZE 3991
-----------	-----------



CATEGORY	A	B	C	D
LPV DA		4241- <sup>3</sup> / <sub>4</sub>	250 (300- <sup>3</sup> / <sub>4</sub> )	
LNAV/VNAV DA		4270- <sup>7</sup> / <sub>8</sub>	279 (300- <sup>7</sup> / <sub>8</sub> )	
LNAV MDA		4340-1	349 (400-1)	
<input checked="" type="checkbox"/> CIRCLING	4380-1 389 (400-1)	4660-1 669 (700-1)	4660-1 <sup>3</sup> / <sub>4</sub> 669 (700-1 <sup>3</sup> / <sub>4</sub> )	4660-2 669 (700-2)

SC-2, 16 APR 2026 to 14 MAY 2026

SC-2, 16 APR 2026 to 14 MAY 2026