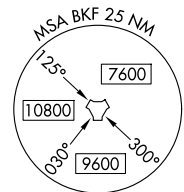


RADAR required.

**TOP ALTITUDE:
ASSIGNED BY ATC.**



25219
DENVER THREE DEPARTURE

AI-538 (FAA)

BUCKLEY SPACE FORCE BASE (KBKF)
AURORA, COLORADO

DENVER DEP CON
128.45 251.075
ATIS
119.675 259.3
CLNC DEL
121.6 275.8

LARAMIE
117.6 LAR
Chan 123

CHEYENNE
113.1 CYS
Chan 78

SIDNEY
115.9 SNY
Chan 106

ROCK SPRINGS
116.0 OCS
Chan 107

GILL
114.2 GLL
Chan 89

MILE HIGH
114.7 DVV
Chan 94

AKRON
114.4 AKO
Chan 91

KREMMUNG
113.8 RLG
Chan 85

DENVER
117.9 DEN
Chan 126

THURMAN
112.9 TXC
Chan 76

HAYES CENTER
117.7 HCT
Chan 124

MEEKER
115.2 EKR
Chan 99

N

BUCKLEY
Chan 33
BKF
(109.6)

FALCON
116.3 FQF
Chan 110

GOODLAND
115.1 GLD
Chan 98

GRAND JUNCTION
112.4 JNC
Chan 71

BLACK FOREST
112.5 BRK
Chan 72

HUGO
112.1 HGO
Chan 58

BLUE MESA
114.9 HBU
Chan 96

PUEBLO
116.7 PUB
Chan 114

TAKEOFF MINIMUMS
All runways: Standard.

GARDEN CITY
113.3 GCK
Chan 80

(CONTINUED ON FOLLOWING PAGE)

NOTE: Chart not to scale.

DENVER THREE DEPARTURE
12JUN25

AURORA, COLORADO
BUCKLEY SPACE FORCE BASE (KBKF)



DEPARTURE ROUTE DESCRIPTION

TAKEOFF ALL RUNWAYS: Fly assigned heading and altitude for RADAR vectors to assigned route. Expect filed altitude 10 minutes after departure.

LOST COMMUNICATIONS: If no transmissions are received within one minute after departure, maintain assigned heading until 7000, then climb to filed altitude direct to DEN VOR/DME, then on assigned route. If filed altitude is above 10000, cross DEN VOR/DME at or above 11000.

SW-1, 16 APR 2026 to 14 MAY 2026

SW-1, 16 APR 2026 to 14 MAY 2026