

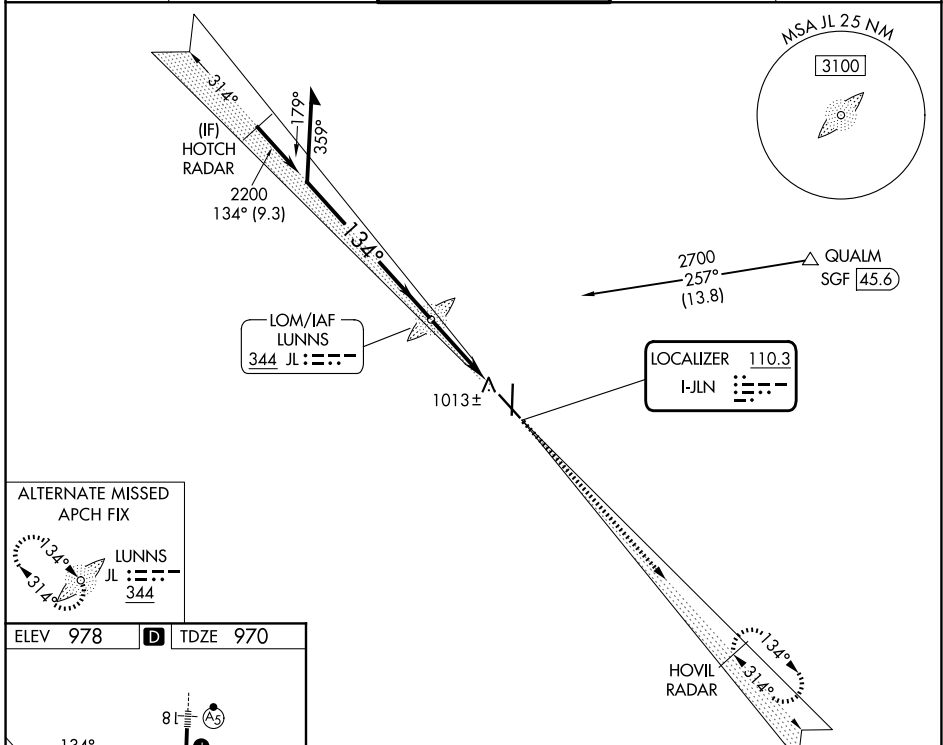
LOC I-JLN 110.3	APP CRS 134°	Rwy Ldg 5813 TDZE 970 Apt Elev 978
---------------------------	------------------------	---------------------------------------------------------------

ILS or LOC RWY 13

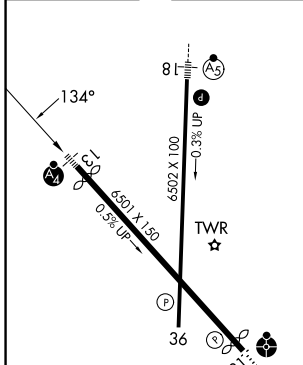
JOPLIN RGNL (JLN)

ADF required for LOC only. RADAR required.	MALSF	MISSED APPROACH: Climb to 3100 on I-JLN LOC localizer course southeast to HOVIL/RADAR and hold.
Autopilot coupled approach NA below 1147. Inop table does not apply to S-ILS 13 all Cats. MALSF (NSTD) 1368'.		

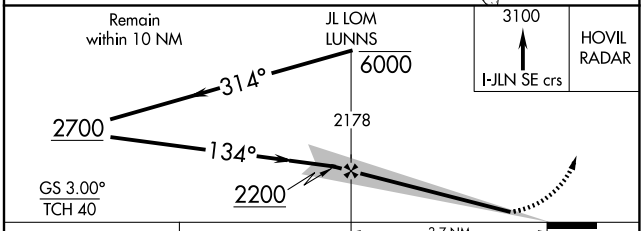
ATIS 120.85	KANSAS CITY CENTER 128.6 282.325	JOPLIN TOWER * 119.8 (CTAF) 0	GND CON 121.6	UNICOM 122.95
-----------------------	--------------------------------------------	-----------------------------------------	-------------------------	-------------------------



ELEV 978	D	TDZE 970
----------	----------	----------



HIRL Rwy 13-31	HIRL Rwy 18-36				
FAF to MAP 3.7 NM					
Knots	60	90	120	150	180
Min:Sec	3:42	2:28	1:51	1:29	1:14



	3.7 NM			
CATEGORY	A	B	C	D
S-ILS 13		1170/40	200 (200-¾)	
S-LOC 13		1300/40	330 (400-¾)	
CIRCLING	1460-1 482 (500-1)	1500-1 522 (600-1)	1540-1½ 562 (600-1½)	1580-2 602 (700-2)

NC-3, 16 APR 2026 to 14 MAY 2026

NC-3, 16 APR 2026 to 14 MAY 2026