

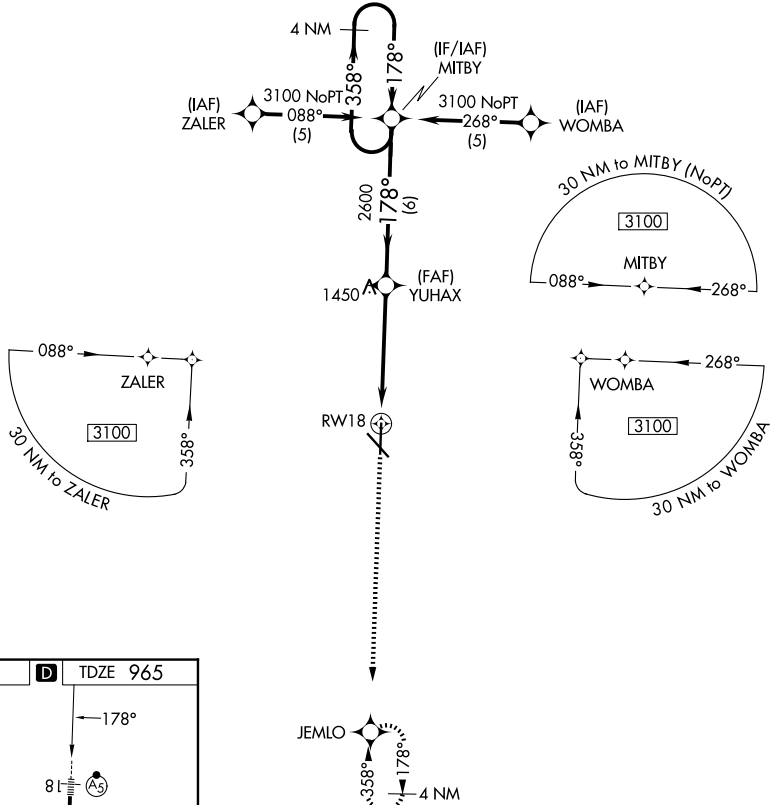
WAAS CH <b>97309</b> <b>W18A</b>	APP CRS <b>178°</b>	Rwy Ldg TDZE Apt Elev	<b>6499</b> <b>965</b> <b>978</b>
--	------------------------	-----------------------------	---

# RNAV (GPS) RWY 18

JOPLIN RGNL (JLN)

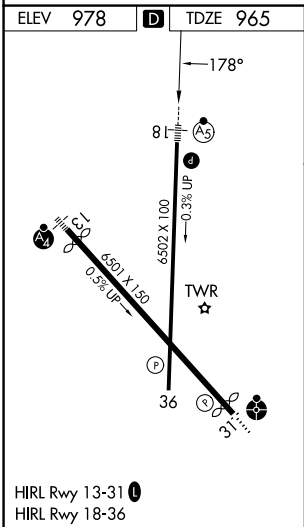
RNP APCH.		MALSR	MISSED APPROACH: Climb to 3100 direct JEMLO and hold.	
▼ For uncompensated Baro-VNAV systems, procedure NA below -16°C (4°F) or above 54°C (130°F). For inoperative MALSR, increase LPV all Cats visibility to RVR 5000.				

ATIS <b>120.85</b>	KANSAS CITY CENTER <b>128.6 282.325</b>	JOPLIN TOWER * <b>119.8 (CTAF) 0</b>	GND CON <b>121.6</b>	UNICOM <b>122.95</b>
-----------------------	--	---	-------------------------	-------------------------



NC-3, 16 APR 2026 to 14 MAY 2026

NC-3, 16 APR 2026 to 14 MAY 2026



3100	JEMLO	* LNAV only.	YUHAX	MITBY	4 NM Holding Pattern
↑		* 1.9 NM to RWY 18	2600	358°	3100
				← 178°	GP 3.00° TCH 46
CATEGORY	A	B	C	D	
LPV DA		1220/24	255 (300-½)		
LNAV/VNAV DA		1460/60	495 (500-1¼)		
LNAV MDA	1600/24	635 (700-½)	1600/60 635 (700-1¼)	1600-½ 635 (700-1½)	
CIRCLING		1600-1¾	622 (700-1¾)		1600-2 622 (700-2)