

WAAS CH 65631 W13A	APP CRS 136°	Rwy Ldg 4498 TDZE 2130 Apt Elev 2131
--	------------------------	---

RNAV (GPS) RWY 13

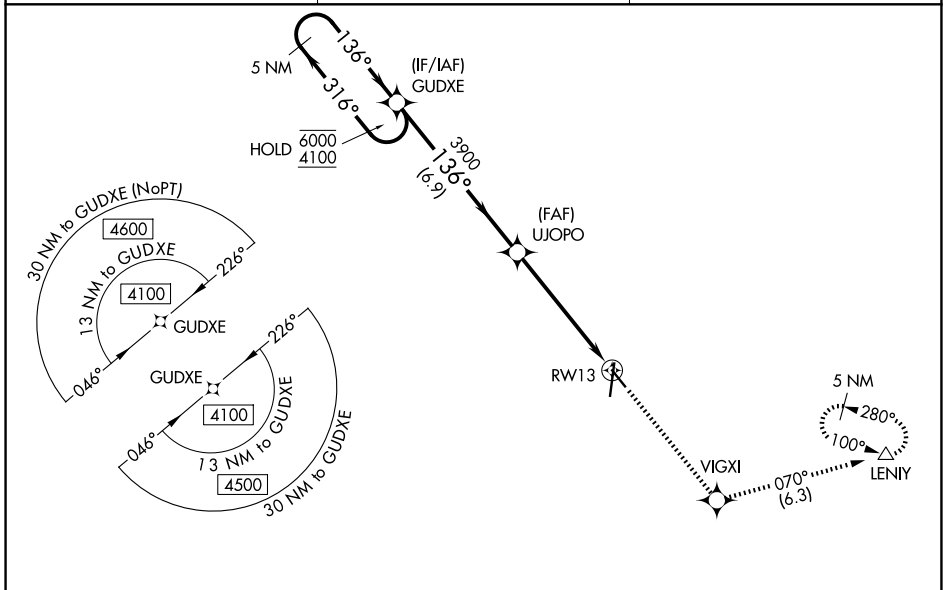
KEARNEY RGNL (E.A.R.)

RNP APCH.

⚠ Baro-VNAV and VDP NA when using Holdrege altimeter setting. For uncompensated Baro-VNAV systems, LNAV/VNAV NA below -23°C or above 54°C. When local altimeter setting not received, use Holdrege altimeter setting: increase LPV DA to 2407 feet and all Cats visibility $\frac{1}{8}$ SM; increase LNAV/VNAV DA to 2457 feet and all Cats visibility $\frac{3}{8}$ SM and all MDAs 80 feet; increase visibility LNAV and Circling Cat C $\frac{1}{8}$ SM.

MISSED APPROACH: Climb to 4300 direct VIGXI and on track 070° to LENIY and hold.

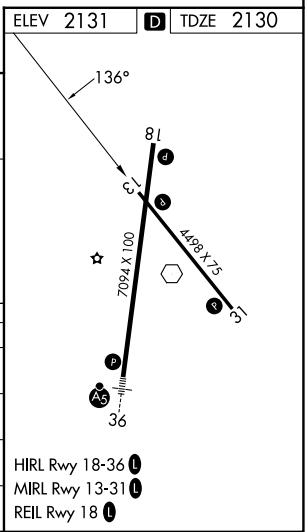
AWOS-3PT 123.875	MINNEAPOLIS CENTER 119.4 278.8	UNICOM 123.0 (CTAF) 0
----------------------------	--	---------------------------------



NC-2, 16 APR 2026 to 14 MAY 2026

NC-2, 16 APR 2026 to 14 MAY 2026

5 NM Holding Pattern		VGSI and RNAV glidepath not coincident (VGSI Angle 3.00/TCH 43).		4300 VIGXI	tr 070° LENIY
6000 ← 316°		3900 UJOPO		*1.5 NM to RWY13	
4100 → 136°		3900		*LNAV only	
GP 3.00° TCH 43		6.9 NM		3.9 NM	
				1.5 NM	
CATEGORY	A	B	C	D	
LPV DA	2330- $\frac{3}{4}$		200 (200- $\frac{3}{4}$)	NA	
LNAV/VNAV DA	2380- $\frac{3}{4}$		250 (300- $\frac{3}{4}$)	NA	
LNAV MDA	2720-1	590 (600-1)	2720-1 $\frac{3}{4}$ 590 (600-1 $\frac{3}{4}$)	NA	
CIRCLING	2720-1	589 (600-1)	2720-1 $\frac{3}{4}$ 589 (600-1 $\frac{3}{4}$)	NA	



HIRL Rwy 18-36 **0**
MIRL Rwy 13-31 **0**
REIL Rwy 18 **0**