

WAAS CH <b>86213</b> <b>W18A</b>	APP CRS <b>182°</b>	Rwy Ldg <b>7094</b> TDZE <b>2130</b> Apt Elev <b>2132</b>
----------------------------------------	------------------------	-----------------------------------------------------------------

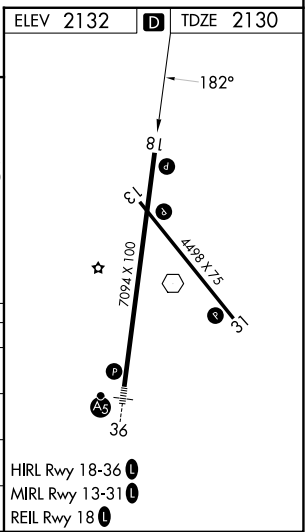
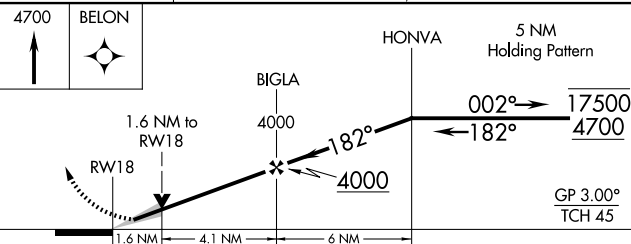
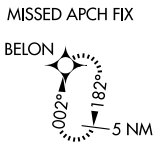
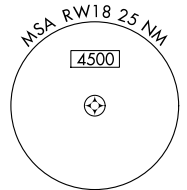
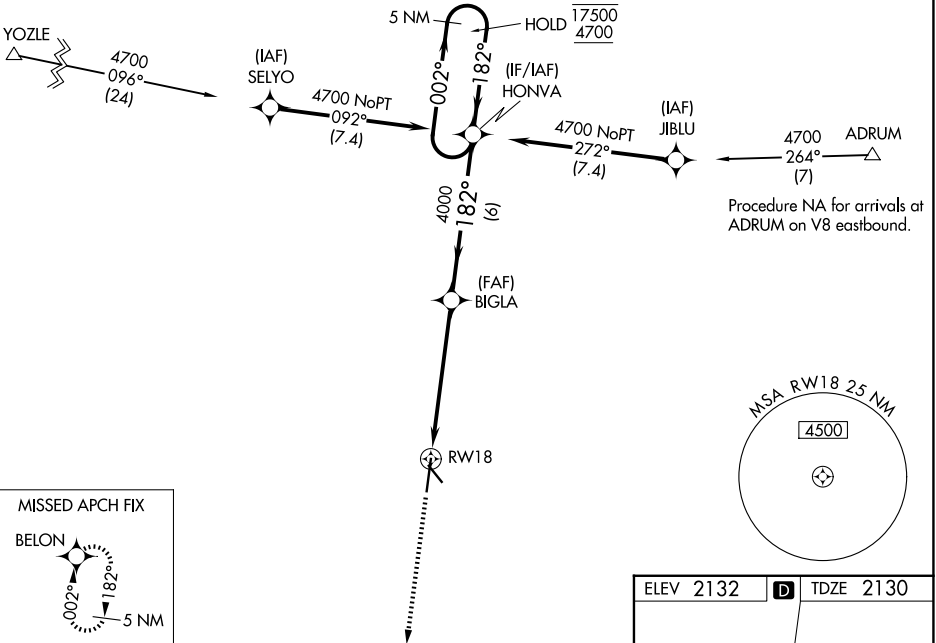
# RNAV (GPS) RWY 18

KEARNEY RGNL (E.A.R.)

RNP APCH - GPS.	MISSED APPROACH: Climb to 4700 direct BELON and hold.
<p>▼ For uncompensated Baro-VNAV systems, LNAV/VNAV NA below -23°C or above 54°C.</p> <p>▲</p>	

AWOS-3PT <b>123.875</b>	MINNEAPOLIS CENTER <b>119.4 278.8</b>	UNICOM <b>123.0 (CTAF) ①</b>
----------------------------	------------------------------------------	---------------------------------

Procedure NA for arrivals at YOZLE on V6 westbound.



CATEGORY	A	B	C	D
LPV DA		2330-3/4	200 (200-3/4)	
LNAV/VNAV DA		2393-7/8	263 (300-7/8)	
LNAV MDA	2680-1	550 (600-1)	2680-1 5/8	550 (600-1 5/8)
CIRCLING	2680-1	548 (600-1)	2680-1 5/8	2840-2 1/4

NC-2, 16 APR 2026 to 14 MAY 2026

NC-2, 16 APR 2026 to 14 MAY 2026