

| | | |
|--|------------------------|---|
| WAAS CH 90113 W36A | APP CRS 002° | Rwy Ldg 7094 TDZE 2132 Apt Elev 2132 |
|--|------------------------|---|

RNAV (GPS) RWY 36

KEARNEY RGNL (E.A.R.)

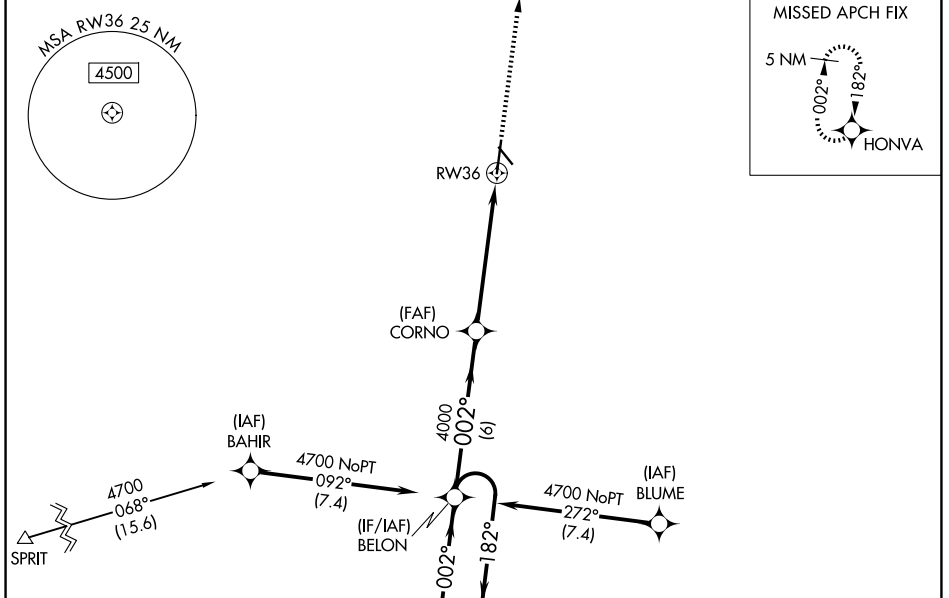
RNP APCH - GPS.

For uncompensated Baro-VNAV systems, LNAV/VNAV NA below -22°C or above 54°C. For inop ALS, increase LNAV/VNAV all Cats visibility to 7/8 SM.

MALSR

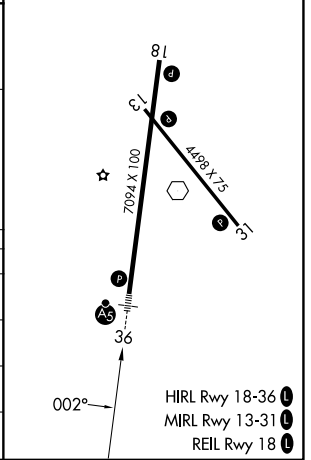
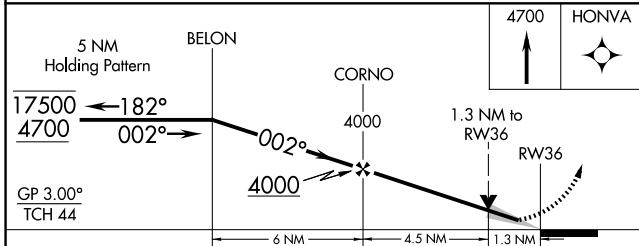
MISSED APPROACH: Climb to 4700 direct HONVA and hold.

| | | |
|----------------------------|--|---------------------------------|
| AWOS-3PT 123.875 | MINNEAPOLIS CENTER 119.4 278.8 | UNICOM 123.0 (CTAF) 1 |
|----------------------------|--|---------------------------------|



Procedure NA for arrivals at SPRIT on V220 southwest bound.

| | | |
|-----------|----------|-----------|
| ELEV 2132 | D | TDZE 2132 |
|-----------|----------|-----------|



| CATEGORY | A | B | C | D |
|--------------|------------------------|---|---|---|
| LPV DA | 2332-1/2 | | 200 (200-1/2) | |
| LNAV/VNAV DA | 2419-1/2 | | 287 (300-1/2) | |
| LNAV MDA | 2580-1/2 448 (500-1/2) | | 2580-7/8 448 (500-7/8) | |
| CIRCLING | 2600-1 468 (500-1) | | 2640-1 1/2 508 (600-1 1/2) 2840-2 1/4 708 (800-2 1/4) | |

- HIRL Rwy 18-36
- MIRL Rwy 13-31
- REIL Rwy 18

NC-2, 16 APR 2026 to 14 MAY 2026

NC-2, 16 APR 2026 to 14 MAY 2026