

APP CRS	Rwy Idg	5005
270°	TDZE	956
	Apt Elev	983

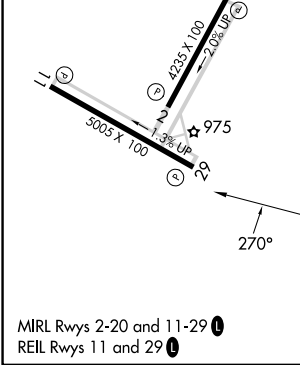
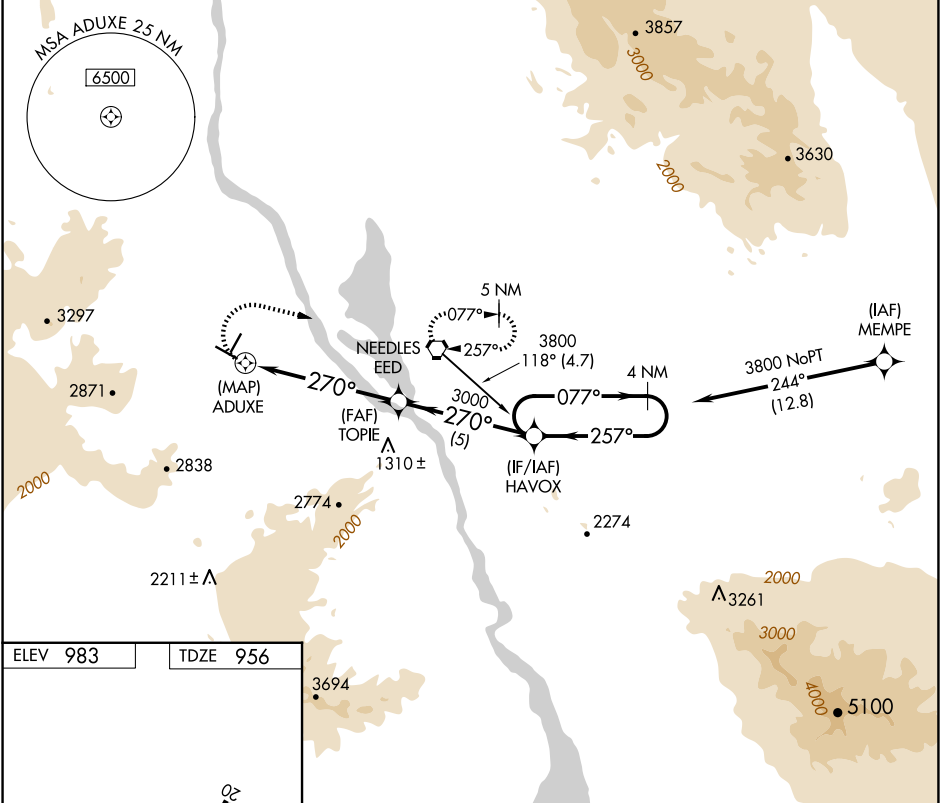
RNAV (GPS) RWY 29

NEEDLES (EED)

Straight-in minimums not authorized at night.
 GPS or RNP-0.3 required. DME/DME RNP-0.3 NA.
 Circling NA for Cats C and D south of Rwy 11-29.

MISSED APPROACH: Climbing right turn to 6000 direct to EED VORTAC and hold.

ASOS 128.325	LOS ANGELES CENTER 134.65 360.65	UNICOM 123.0 (CTAF) ①
------------------------	--	---------------------------------



	6000	EED	VGSi and descent angle not coincident (VGSi Angle 3.00/TCH 40).
			HAVOX 4 NM Holding Pattern
		TOPIE	
		ADUXE	
	0.4	0.6	5 NM
			5 NM
CATEGORY	A	B	C
LNAV MDA	1300-1 344 (400-1)		
			1300-1¼ 344 (400-1¼)
CIRCLING	1560-1 577 (600-1)	1680-1 697 (700-1)	1680-2 697 (700-2)
			1960-3 977 (1000-3)

SW-3, 16 APR 2026 to 14 MAY 2026

SW-3, 16 APR 2026 to 14 MAY 2026