

# HI-TACAN Z RWY 31

TACAN OFF Chan <b>54</b>	APCH CRS <b>316°</b>	Rwy ldg <b>10,612</b> TDZE <b>991</b> Arprt Elev <b>1048</b>
-----------------------------	-------------------------	--

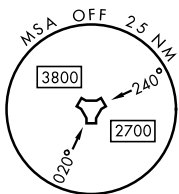
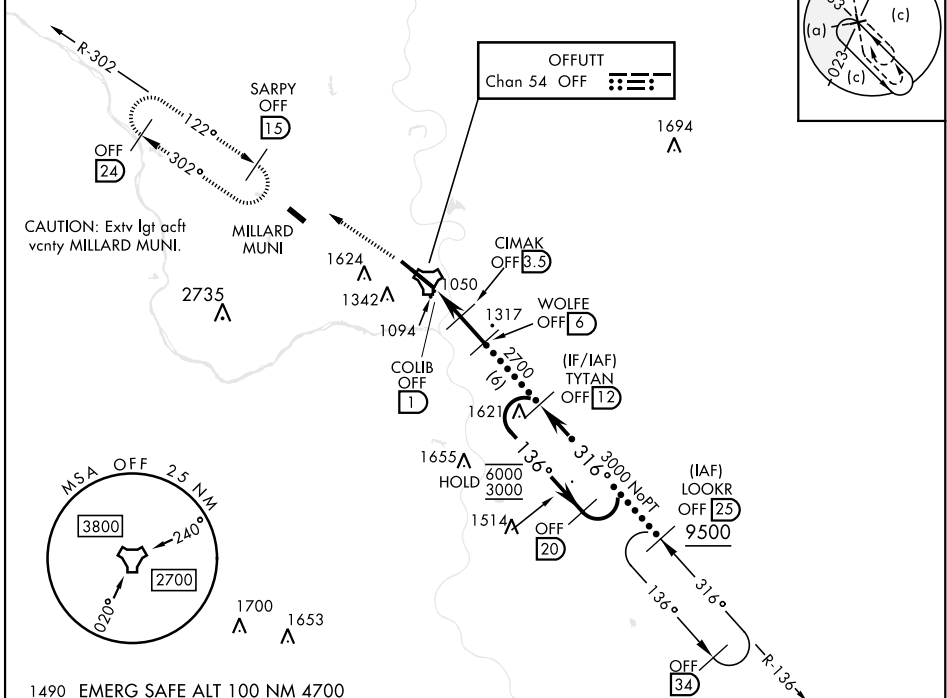
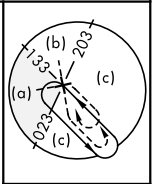
[USAF]

OFFUTT AFB (KOFF)

<p>▼ *When ALS inop, increase CAT CDE RVR to 55, vis to 1 mile. **Circling not authorized N of Rwy 13-31.</p>	<p>ALSF-1 A1</p>	<p>MISSED APPROACH: Climb to 3000 via OFF TACAN R-302 to SARPY and hold.</p>
---	----------------------	--

<p>ATIS <b>126.025 273.5</b></p>	<p>OMAHA APP CON <b>124.5 263.0</b> (E) <b>135.875 354.05</b> (W)</p>	<p>TOWER <b>123.7 279.625</b></p>	<p>GND CON <b>121.7 289.4</b></p>
--------------------------------------	---	---------------------------------------	---------------------------------------

CAUTION: When circling to Rwy 13 at night, operational VGSI required, remain on or above VGSI glidepath until threshold.



1490 EMERG SAFE ALT 100 NM 4700

<p>3000 OFF R-302</p> <p>SARPY OFF 15</p>	<p>TYTAN OFF 12</p> <p>OFF 20</p>	<p>ELEV 1048</p> <p>TDZE 991</p> <p>Rwy 13 ldg 10,695' Rwy 31 ldg 10,612'</p>	
<p>OFF TACAN</p> <p>COLIB OFF 1</p> <p>CIMAK OFF 3.5</p> <p>WOLFE OFF 6</p> <p>2700</p> <p>1940</p> <p>2.82° TCH 56</p> <p>0.6 2.5 NM 2.5 NM</p>	<p>6000 3000</p> <p>133°</p> <p>316°</p> <p>316°</p>	<p>A1</p> <p>TWR</p> <p>11,703 x 150</p> <p>0.7% UP</p> <p>316°</p> <p>55</p> <p>A1</p>	
<p>CATEGORY</p>	<p>C</p>	<p>D</p>	<p>E</p>
<p>S-31*</p>	<p>1360/40</p>	<p>368 (400-¾)</p>	
<p>CIRCLING**</p>	<p>1660-¾ 612 (700-1¾)</p>	<p>1940-3</p>	<p>892 (900-3)</p>
<p>OMAHA, NEBRASKA</p>			<p>HIRL Rwy 13-31 Rwy 13-31 ALS nstd</p>

# HI-TACAN Z RWY 31

NC-2, 16 APR 2026 to 14 MAY 2026

NC-2, 16 APR 2026 to 14 MAY 2026