

ILS or LOC RWY 13

LOC I-ATB 111.7	APCH CRS 127°	Rwy ldg 10,695 TDZE 1048 Arpt Elev 1048
---------------------------	-------------------------	--

[USAF]

OFFUTT AFB (KOFF)

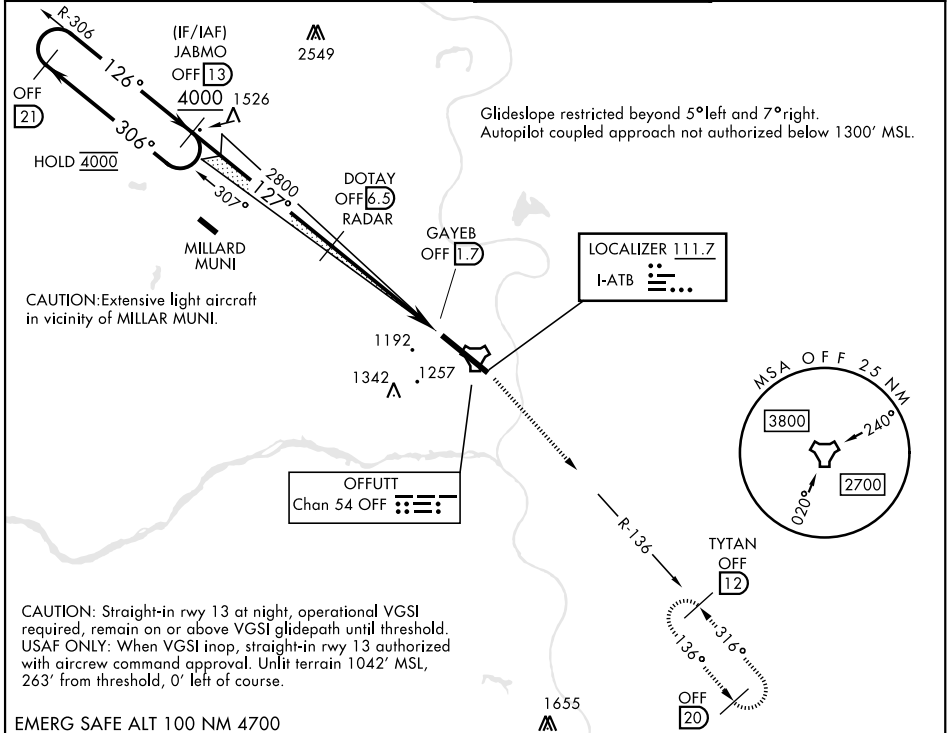
RADAR or DME required

* When ALS inop, increase CAT AB RVR to 55, vis to 1 mile; CAT CDE vis to 1 3/8 miles.
 ** Circling not authorized N of Rwy 13-31.

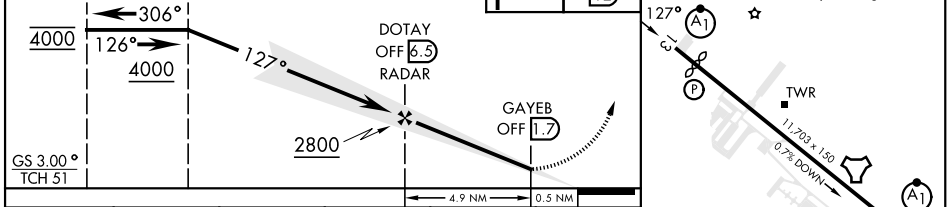
ALSF-1

MISSED APPROACH: Climb to 3000 via OFF TACAN R-136 to TYTAN and hold.

ATIS 126.025 273.5	OMAHA APP CON 124.5 263.0 (E) 135.875 354.05 (W)	TOWER 123.7 279.625	GND CON 121.7 289.4
------------------------------	--	-------------------------------	-------------------------------



EMERG SAFE ALT 100 NM 4700	3000 OFF R-136	TYTAN OFF 12	ELEV 1048	TDZE 1048
----------------------------	----------------	--------------	-----------	-----------



CATEGORY S-ILS 13 S-LOC 13* CIRCLING**	A 1560/50 1560-1	B 512 (600-1)	C 250 1660-1 3/4 612 (700-134)	D (300-1) 512 (600-1) 1940-3 892 (900-3)	E HIRL Rwy 13-31 Rwy 13-31 ALS nstd FAF to MAP 4.9 NM Knots: 60, 90, 120, 150, 180 Min:Sec: 4:54, 3:16, 2:27, 1:58, 1:38
---	------------------------	------------------	---	---	---

OMAHA, NEBRASKA 41° 07' N-95° 54' W OFFUTT AFB (KOFF)

ILS or LOC RWY 13

NC-2, 16 APR 2026 to 14 MAY 2026

NC-2, 16 APR 2026 to 14 MAY 2026