

OMAHA, NEBRASKA

RNAV (GPS) RWY 13

WAAS CH 91358 W13A	APCH CRS 127°	Rwy ldg TDZE Arprt Elev	10,695 1048 1048
--------------------------	------------------	-------------------------------	------------------------

-(USAF)

OFFUTT AFB (KOFF)

RNP APCH-GPS



MISSED APPROACH: Climb to 3000 direct WONSI, track 127° to SLPRS and hold.

▼ * When ALS inop, increase vis to 1 1/4 miles.
 ** When ALS inop, increase CAT AB RVR to 55, vis to 1 mile; CAT CDE vis to 1 1/2 miles.

ATIS 126.025 273.5	OMAHA APP CON/DEP CON 124.5 263.0 E 135.875 354.05 W	TOWER 123.7 279.625	GND CON 121.7 289.4
------------------------------	--	-------------------------------	-------------------------------

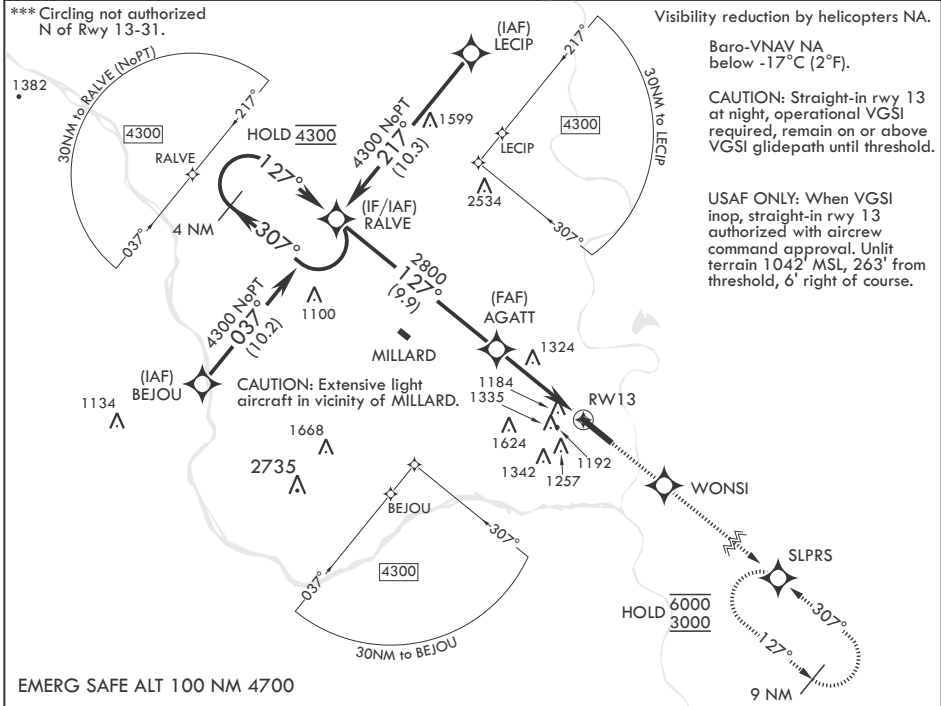
*** Circling not authorized N of Rwy 13-31.

Visibility reduction by helicopters NA.

Baro-VNAV NA below -17°C (2°F).

CAUTION: Straight-in rwy 13 at night, operational VGSI required, remain on or above VGSI glidepath until threshold.

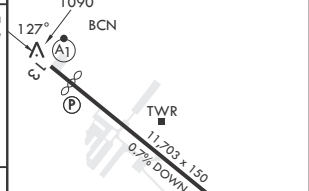
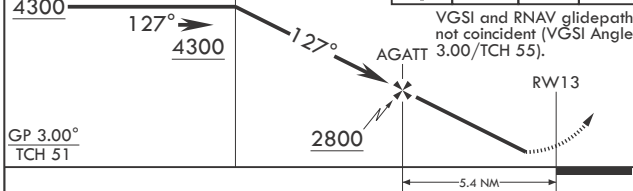
USAF ONLY: When VGSI inop, straight-in rwy 13 authorized with aircrew command approval. Unlit terrain 1042' MSL, 263' from threshold, 6' right of course.



EMERG SAFE ALT 100 NM 4700

4 NM Holding Pattern	3000	WONSI	tr 127°	SLPRS	ELEV 1048	TDZE 1048
----------------------	------	-------	---------	-------	-----------	-----------

Rwy 13 ldg 10,695'
Rwy 31 ldg 10,612'



CATEGORY	A	B	C	D	E
LPV DA		1298/50	250		(300-1)
LNAV/VNAV DA*		1479/50	431		(500-1)
LNAV MDA**	1580/50	532 (600-1)	1580/55	532	(600-1)
☐ CIRCLING***	1580-1	532 (600-1)	1660-1 3/4 612 (700-1 3/4)	1940-3	892 (900-3)

HIRL all Rwys
Rwy 13-31 ALS nstd

OMAHA, NEBRASKA

41°07'N - 95°55'W

OFFUTT AFB (KOFF)

Amdt 1 22FEB24

RNAV (GPS) RWY 13

NC-2, 16 APR 2026 to 14 MAY 2026

NC-2, 16 APR 2026 to 14 MAY 2026