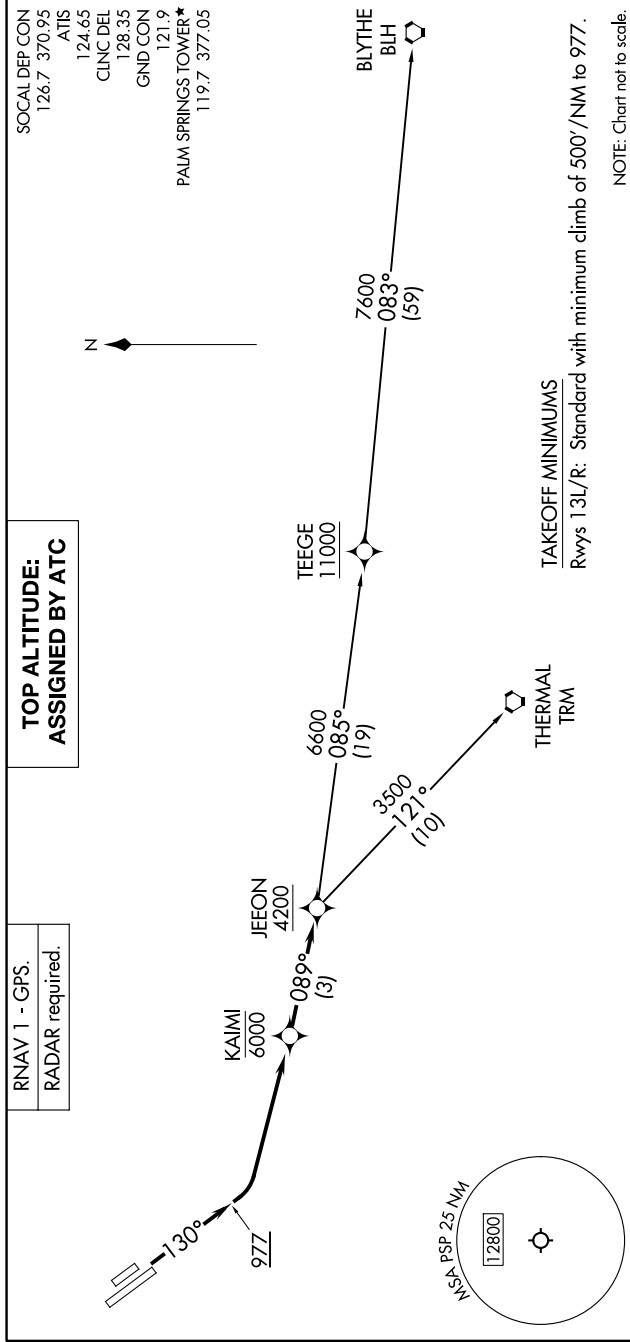


SW-3, 16 APR 2026 to 14 MAY 2026



**TOP ALTITUDE:  
ASSIGNED BY ATC**

RNAV 1 - GPS.  
RADAR required.

SOCAL DEPCON  
126.7 370.95  
ATIS  
124.65  
CLINC DEL  
128.35  
GND CON  
121.9  
PALM SPRINGS TOWER\*  
119.7 377.05

TAKEOFF MINIMUMS  
Rwys 13L/R: Standard with minimum climb of 500'/NM to 977.

NOTE: Chart not to scale.

**DEPARTURE ROUTE DESCRIPTION**

TAKEOFF RUNWAYS 13L/R: Climb on heading 130° to 977, then left turn direct KAIMI at or below 6000, thence . . . . then on track 089° to cross JEEON at or above 4200, then on assigned (transition). Maintain ATC assigned altitude, expect filed altitude 10 minutes after departure.

BLYTHE TRANSITION (JEEON1.BLH)  
THERMAL TRANSITION (JEEON1.TRM)

SW-3, 16 APR 2026 to 14 MAY 2026