

RNAV (RNP) Y RWY 31L

PALM SPRINGS INTL (PSP)

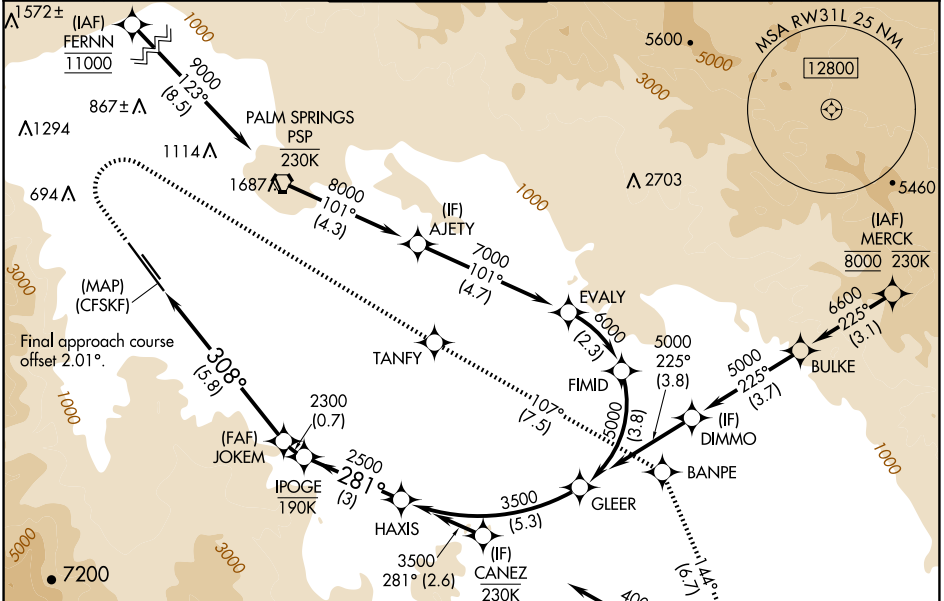
APP CRS	Rwy Ldg	8500
308°	TDZE	430
	Apt Elev	477

RNP AR APCH - GPS, RF, min RNP 0.30. Authorization required.

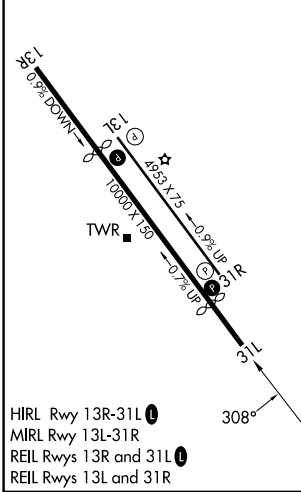
For uncompensated Baro-VNAV systems, procedure NA below 4°C or above 54°C.

MISSED APPROACH: Climb to 900 then climbing right turn to 4000 direct TANFY and track 107° to BANPE and track 144° to TRM VORTAC and hold. Missed approach requires minimum climb of 365 feet per NM to 2200; if unable to meet climb gradient, see RNAV (GPS) Z RWY 31L.

ATIS 124.65	SOCAL APP CON 126.7 370.95 135.275 251.1	PALM SPRINGS TOWER* 119.7 (CTAF) 0 377.05	GND CON 121.9	CLNC DEL 128.35	UNICOM 122.95
-----------------------	--	---	-------------------------	---------------------------	-------------------------

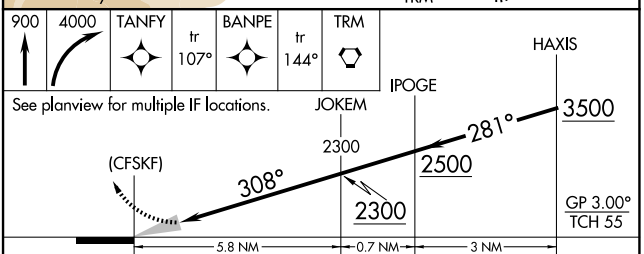


ELEV 477	D	TDZE 430
----------	----------	----------



HIRL Rwy 13R-31L
MIRL Rwy 13L-31R
REIL Rwy 13R and 31L
REIL Rwy 13L and 31R

Procedure NA for arrival on TRM VORTAC airway radials 203 CW 304.



CATEGORY	A	B	C	D
RNP 0.13 DA		680- ³ / ₄	250 (300- ³ / ₄)	
RNP 0.30 DA		718- ⁷ / ₈	288 (300- ⁷ / ₈)	

AUTHORIZATION REQUIRED

SW-3, 16 APR 2026 to 14 MAY 2026

SW-3, 16 APR 2026 to 14 MAY 2026