

APP CRS	Rwy Ldg	6857
130°	TDZE	451
	Apt Elev	477

RNAV (RNP) Z RWY 13R

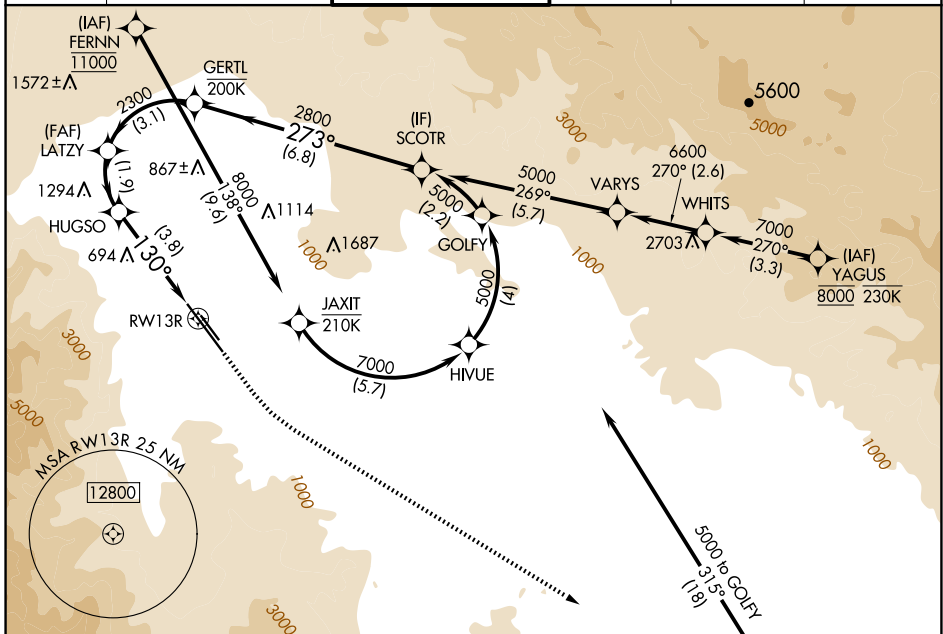
PALM SPRINGS INTL (PSP)

RNP AR APCH-GPS, RF, min RNP 0.50. Authorization required.

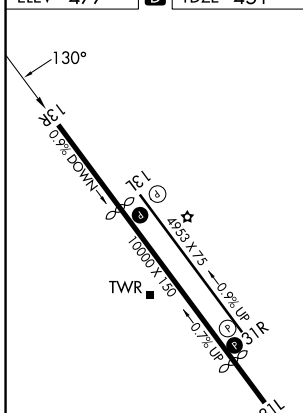
MISSED APPROACH: Climb to 900 then climbing left turn to 4000 direct TRM VORTAC and hold.

For uncompensated Baro-VNAV systems, procedure NA below 4°C or above 54°C.

ATIS	SOCAL APP CON	PALM SPRINGS TOWER*	GND CON	CLNC DEL	UNICOM
124.65	126.7 370.95 135.275 251.1	119.7 (CTAF) 377.05	121.9	128.35	122.95



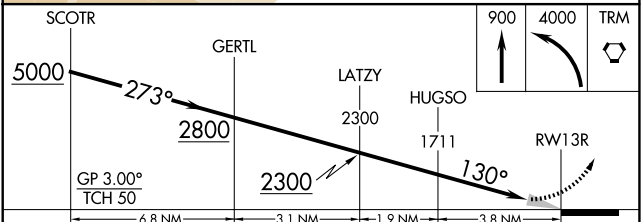
ELEV	477	D	TDZE	451
------	------------	----------	------	------------



HIRL Rwy 13R-31L **1**
 MIRL Rwy 13L-31R
 REIL Rwy 13R and 31L **1**
 REIL Rwy 13L and 31R

Procedure NA for arrival on TRM VORTAC airway radials 263 CW 021.

(IAF) THERMAL TRM 4 NM



AUTHORIZATION REQUIRED				
-------------------------------	--	--	--	--

SW-3, 16 APR 2026 to 14 MAY 2026

SW-3, 16 APR 2026 to 14 MAY 2026