

SBONO ONE ARRIVAL

SOCAL APP CON
 126.7 370.95
 PSP ATIS
 124.65
 TRM ASOS
 118.325
 BERMUDA DUNES UNICOM
 122.8
 JACQUELINE COCHRAN UNICOM
 123.0
 PALM SPRINGS TOWER*
 119.7 377.05

GOFFS
 114.4 GFS :...:
 Chan 91

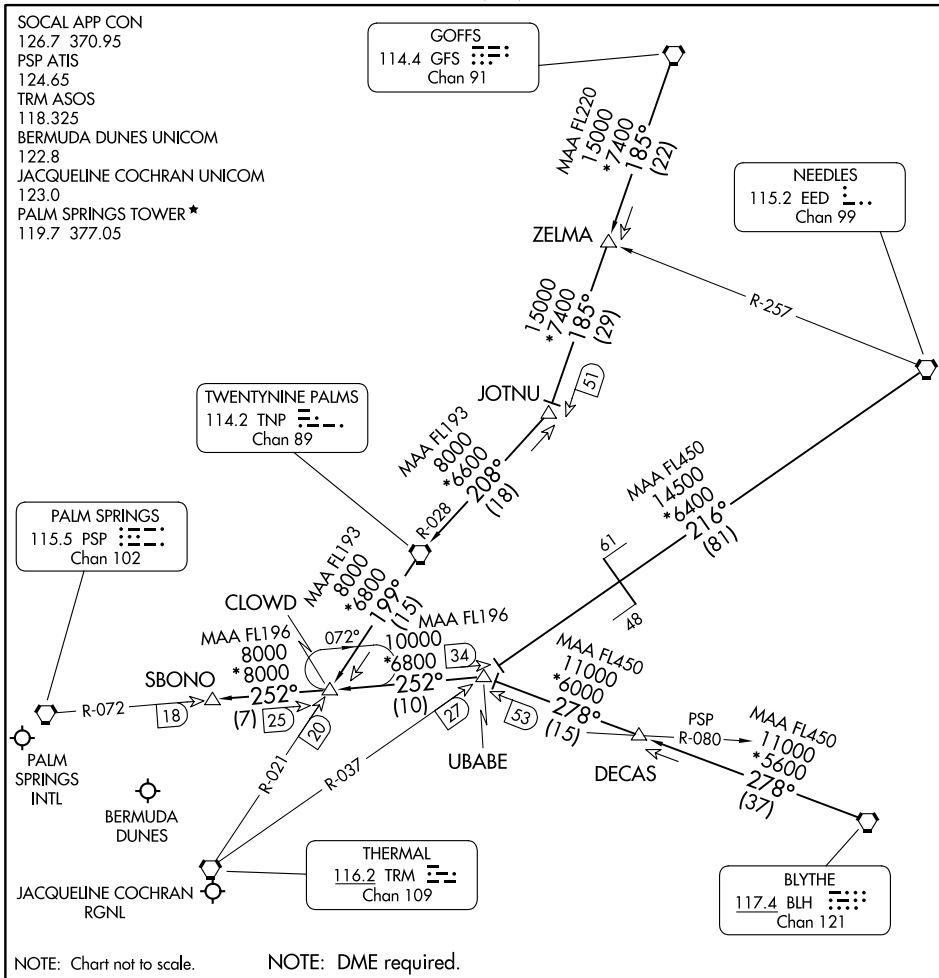
NEEDLES
 115.2 EED :...:
 Chan 99

TWENTYNINE PALMS
 114.2 TNP :...:
 Chan 89

PALM SPRINGS
 115.5 PSP :...:
 Chan 102

THERMAL
 116.2 TRM :...:
 Chan 109

BLYTHE
 117.4 BLH :...:
 Chan 121



SW-3, 16 APR 2026 to 14 MAY 2026

SW-3, 16 APR 2026 to 14 MAY 2026

NOTE: Chart not to scale.

NOTE: DME required.

ARRIVAL ROUTE DESCRIPTION

BLYTHE TRANSITION (BLH.SBONO1): From over BLH VORTAC on BLH R-278 and PSP R-072 to SBONO DME. Thence. . .

DECAS TRANSITION (DECAS.SBONO1): From over DECAS INT on BLH R-278 and PSP R-072 to SBONO DME. Thence. . .

GOFFS TRANSITION (GFS.SBONO1): From over GFS VORTAC on GFS R-185 and TNP R-028 to TNP VORTAC, then on TNP R-199 and PSP R-072 to SBONO DME. Thence. . .

NEEDLES TRANSITION (EED.SBONO1): From over EED VORTAC on EED R-216 and TRM R-037 to UBABE DME, then on PSP R-072 to SBONO DME. Thence. . .

. . . .From over SBONO DME expect RADAR vectors to final approach course.

SBONO ONE ARRIVAL