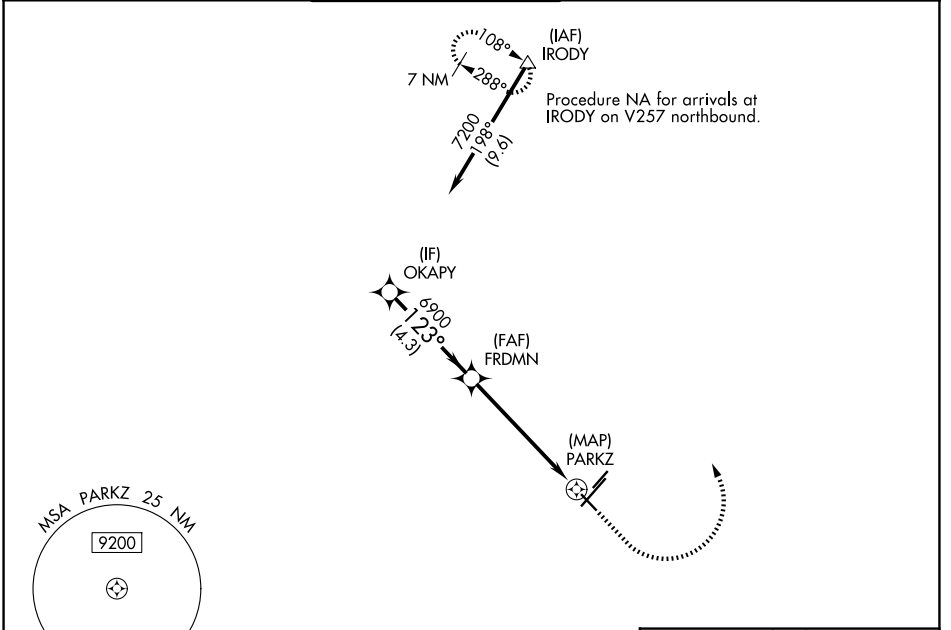


WAAS CH 49235 W12A	APP CRS 123°	Rwy Ldg TDZE Apt Elev	4258 5026 5045
--	------------------------	-----------------------------	---

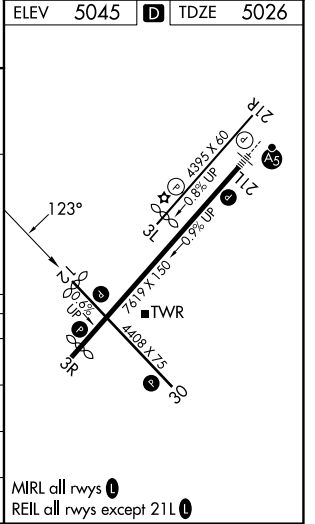
RNAV (GPS) RWY 12

PRESCOTT RGNL/ERNEST A LOVE FLD (P.R.C)

RNP APCH.		PRESCOTT TOWER ★		GND CON	UNICOM
<p>▼ For uncompensated Baro-VNAV systems, LNAV/VNAV NA below -11°C or above 49°C. Rwy 12 helicopter visibility reduction below 1 SM NA. Straight-in Rwy 12 NA at night, Circling Rwy 12, 3L, 30 NA at night.</p>		<p>125.3 (CTAF) 0 257.9</p>		121.7	128.75 0 122.95



VGSi and RNAV glidepath not coincident (VGSi Angle 4.24/TCH 52).		5500	9000	IRODY
OKAPY	FRDMN			
7200	6900			
GP 3.00° TCH 48	6900			
	4.3 NM	5.5 NM	0.3	
CATEGORY	A	B	C	D
LPV DA	5276-1		250 (300-1)	
LNAV/VNAV DA	5432-1 3/8		406 (400-1 3/8)	
LNAV MDA	5520-1	494 (500-1)	5520-1 3/8	494 (500-1 3/8)
CIRCLING	5520-1 475 (500-1)	5760-1 715 (800-1)	6080-3 1035 (1100-3)	6680-3 1635 (1700-3)



SW-4, 16 APR 2026 to 14 MAY 2026

SW-4, 16 APR 2026 to 14 MAY 2026

MRL all rwys **0**
REIL all rwys except 21L **0**