

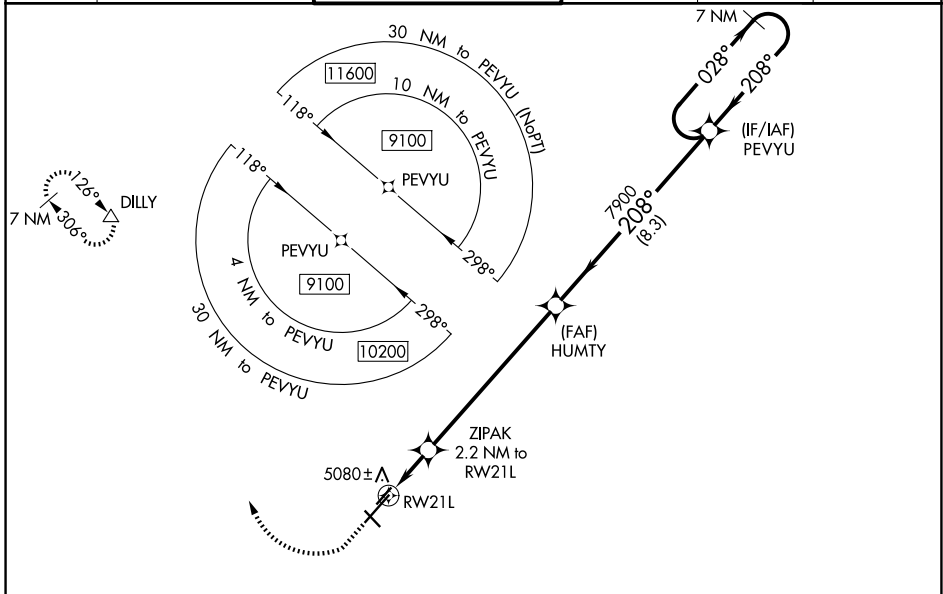
WAAS CH <b>40002</b> <b>W21A</b>	APP CRS <b>208°</b>	Rwy Ldg TDZE Apt Elev	<b>7619</b> <b>4977</b> <b>5045</b>
--	------------------------	-----------------------------	---

# RNAV (GPS) RWY 21L

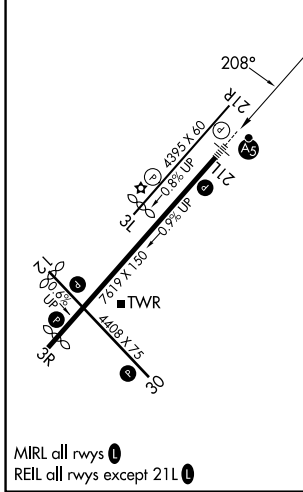
PRESCOTT RGNL/ERNEST A LOVE FLD (P.R.C)

RNP APCH - GPS.	MALSR	MISSED APPROACH: Climb to 5500 then climbing right turn to 9100 direct DILLY and hold, continue climb-in-hold to 9100.
<p>▼ For uncompensated Baro-VNAV systems, LNAV/VNAV NA below -11°C or above 47°C. For inoperative ALS, increase LPV all Cats visibility to 1 SM, LNAV/VNAV all Cats visibility to 1½ SM, and LNAV Cat C/D visibility to 1¾ SM. Circling Rwy 3L, 12, 30 NA at night.</p> <p>⚠ Missed approach requires a minimum climb of 345 feet per NM to 7300.</p>		

ATIS <b>127.2</b>	PHOENIX APP CON <b>133.575 281.55</b>	PRESCOTT TOWER ★ <b>125.3 (CTAF) 257.9</b>	GND CON <b>121.7</b>	<b>128.750</b>	UNICOM <b>122.95</b>
----------------------	--	---	-------------------------	----------------	-------------------------



ELEV 5045	<b>D</b>	TDZE 4977
-----------	----------	-----------



5500	9100	DILLY	ZIPAK 2.2 NM to RW21L	HUMTY 7900	PEVYU 7 NM Holding Pattern
*LNAV only.			*1.5 NM to RW21L	7900	9100
			5700*	7900	GP 3.00° TCH 55
			1.5	0.7	6.9 NM
				8.3 NM	

CATEGORY	A	B	C	D
LPV DA#		5177-½	200 (200-½)	
LPV DA		5277-½	300 (300-½)	
LNAV/VNAV DA		5391-¾	414 (400-¾)	
LNAV MDA	5480-½	503 (500-½)	5480-1	503 (500-1)
CIRCLING	5520-1 475 (500-1)	5760-1 715 (800-1)	6080-3 1035 (1100-3)	6680-3 1635 (1700-3)

SW-4, 16 APR 2026 to 14 MAY 2026

SW-4, 16 APR 2026 to 14 MAY 2026