

APP CRS	Rwy Ldg	10000
057°	TDZE	1103
	Apt Elev	1159

RNAV (GPS) Y RWY 6

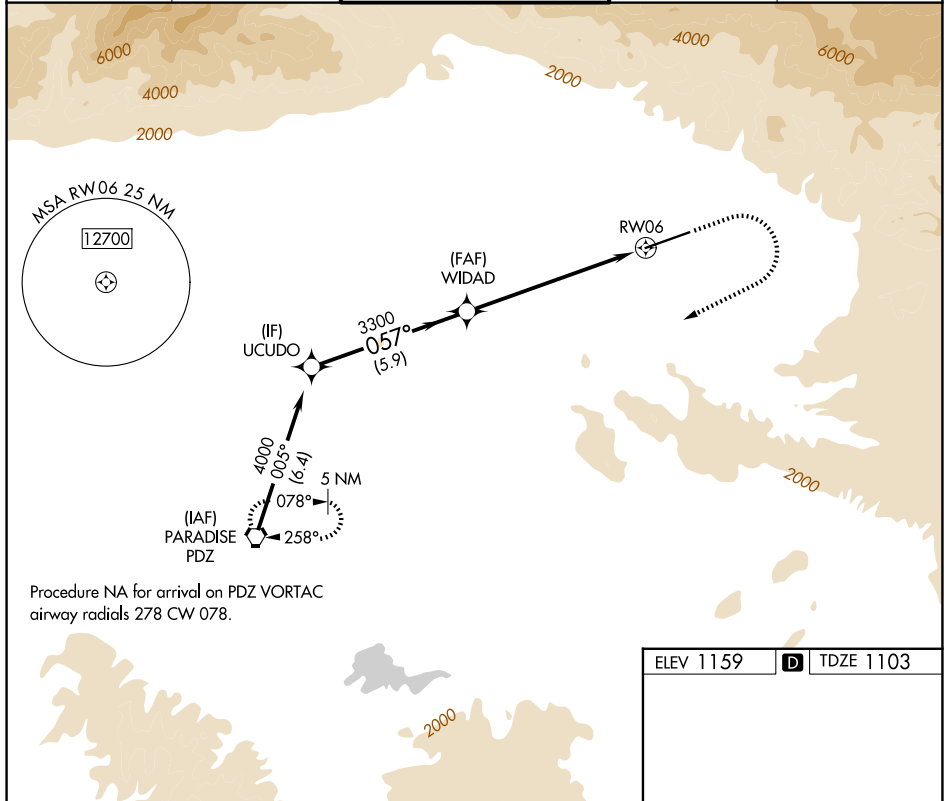
SAN BERNARDINO INTL (SBD)

RNP APCH

⚠ Circling NA northwest of Rwy 6-24. When local altimeter setting not received, use Ontario altimeter setting and increase all MDA 80 feet.

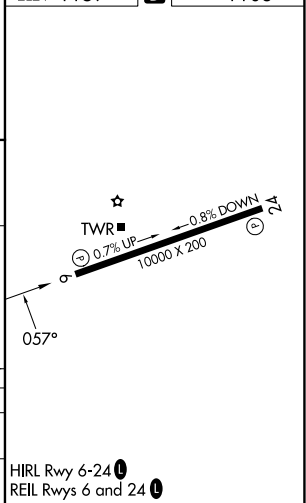
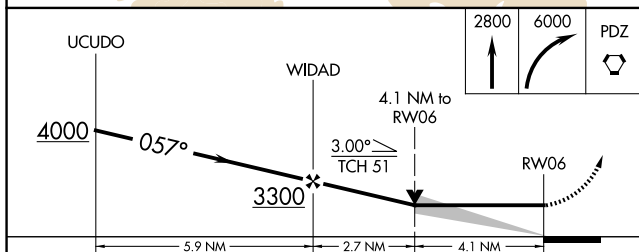
MISSED APPROACH: Climb to 2800 then climbing right turn to 6000 direct PDZ VORTAC and hold, continue climb-in-hold to 6000.

D-ATIS 124.175	SOCAL APP CON 127.0 318.2	SAN BERNARDINO TOWER ★ 119.45 (CTAF) 0	GND CON 121.8	UNICOM 122.975
--------------------------	-------------------------------------	--	-------------------------	--------------------------



Procedure NA for arrival on PDZ VORTAC
airway radials 278 CW 078.

ELEV 1159 **D** TDZE 1103



CATEGORY	A	B	C	D
LNVA MDA	2460-1¼ 1357 (1400-1¼)	2460-1½ 1357 (1400-1½)	2460-3 1357 (1400-3)	2640-3 1481 (1500-3)
CIRCLING	2460-1¼ 1301 (1400-1¼)	2460-1½ 1301 (1400-1½)	2460-3 1301 (1400-3)	2640-3 1481 (1500-3)

HIRL Rwy 6-24 **0**
REIL Rws 6 and 24 **0**