

| | | |
|--|------------------------|--|
| WAAS CH 66041 W06A | APP CRS 057° | Rwy Ldg 10000 TDZE 1103 Apt Elev 1159 |
|--|------------------------|--|

RNAV (GPS) Z RWY 6

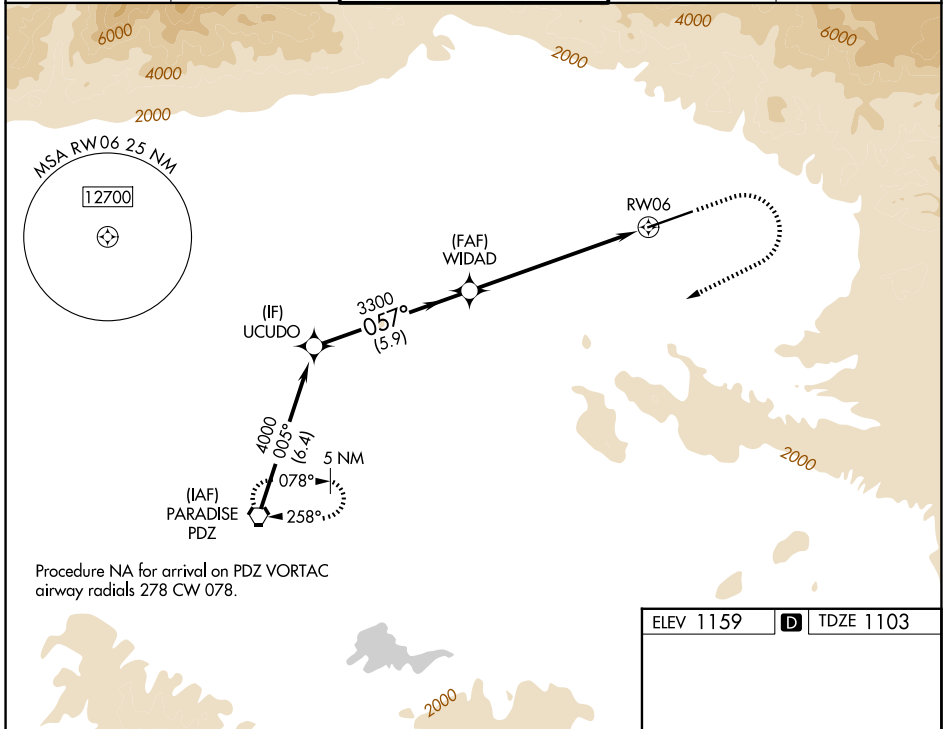
SAN BERNARDINO INTL (SBD)

RNP APCH

⚠ Circling NA northwest of Rwy 6-24. When local altimeter setting not received, use Ontario altimeter setting and increase DA to 1426 feet and all visibilities $\frac{1}{4}$ SM; increase all MDA 80 feet and LNAV Cats C/D and Circling Cat C visibility $\frac{1}{4}$ SM.

MISSED APPROACH: Climb to 2000 then climbing right turn to 6000 direct PDZ VORTAC and hold, continue climb-in-hold to 6000.
Missed approach requires minimum climb of 340 feet per NM to 4000; if unable to meet climb gradient, see RNAV (GPS) Y RWY 6.

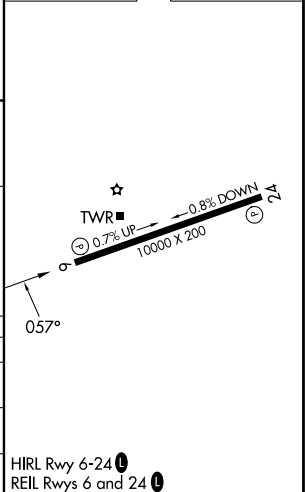
| | | | | |
|--------------------------|-------------------------------------|--|-------------------------|--------------------------|
| D-ATIS 124.175 | SOCAL APP CON 127.0 318.2 | SAN BERNARDINO TOWER ★ 119.45 (CTAF) 0 | GND CON 121.8 | UNICOM 122.975 |
|--------------------------|-------------------------------------|--|-------------------------|--------------------------|



Procedure NA for arrival on PDZ VORTAC airway radials 278 CW 078.

| | |
|-----------|--------------------|
| ELEV 1159 | D TDZE 1103 |
|-----------|--------------------|

| | | | | |
|--------------------|---------------------|-----------------|--|----------------------------|
| UCUDO | WIDAD | 2000 | 6000 | PDZ |
| 4000 | 3300 | ↑ | ↷ | ⬡ |
| GP 3.00° TCH 51 | 3300 | *1.9 NM to RW06 | *LNAV only | |
| 5.9 NM | 4.9 NM | 1.9 NM | | |
| CATEGORY | A | B | C | D |
| LPV DA# | 1353- $\frac{3}{4}$ | | 250 (200- $\frac{3}{4}$) | |
| LNAV MDA# | 1740-1 | 637 (600-1) | 1740-1 $\frac{3}{4}$ | 637 (600-1 $\frac{3}{4}$) |
| CIRCLING | 1740-1 | 581 (600-1) | 1760-1 $\frac{3}{4}$ 601 (700-1 $\frac{3}{4}$) | 2640-3 1481 (1500-3) |



SW-3, 16 APR 2026 to 14 MAY 2026

SW-3, 16 APR 2026 to 14 MAY 2026