

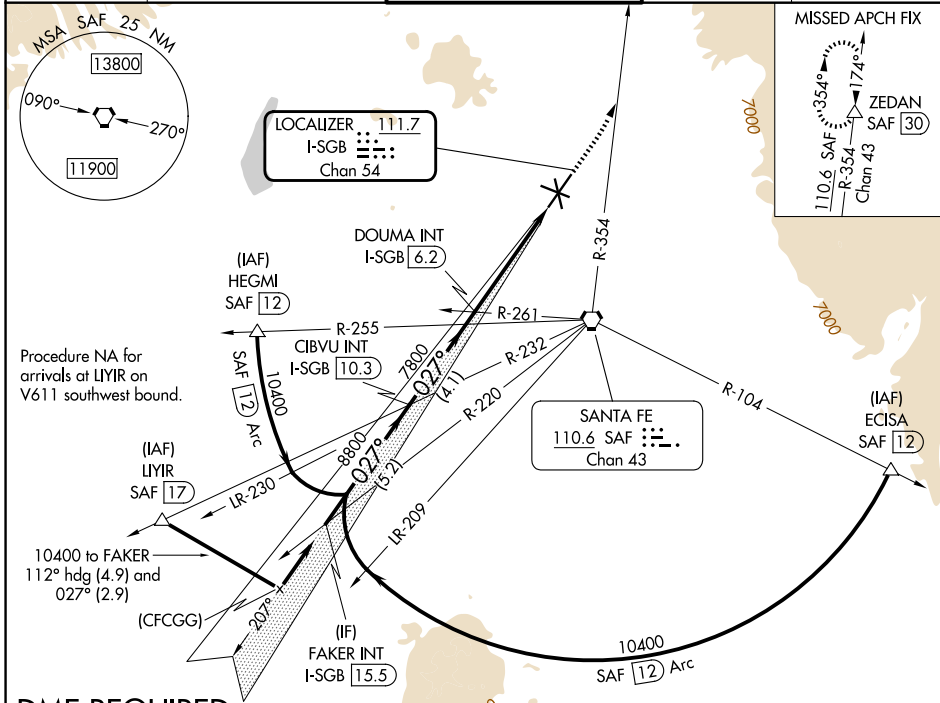
LOC/DME I-SGB <b>111.7</b> Chan <b>54</b>	APP CRS <b>027°</b>	Rwy Ldg TDZE Apt Elev	<b>8366</b> <b>6303</b> <b>6349</b>
---	------------------------	-----------------------------	---

# ILS or LOC RWY 2

SANTA FE RGNL (SAF)

**DME required.** MISSED APPROACH: Climb to 7300 then climbing left turn to 11000 on SAF VORTAC R-354 to ZEDAN/SAF 30 DME and hold.

ATIS <b>128.55</b>	ALBUQUERQUE CENTER <b>132.8 346.35</b>	SANTA FE TOWER ★ <b>119.5 (CTAF) 239.3</b>	GND CON <b>121.7</b>	UNICOM <b>122.95</b>
-----------------------	---	---	-------------------------	-------------------------



SW-1, 16 APR 2026 to 14 MAY 2026

SW-1, 16 APR 2026 to 14 MAY 2026

## DME REQUIRED

ELEV 6349 TDZE 6303	
REIL Rwy 10, 15, 20 and 33 MIRL Rwy 2-20 and 15-33	
VGSi and ILS glidepath not coincident (VGSi Angle 3.00/TCH 69) FAKER INT I-SGB 15.5 CIBVU INT I-SGB 10.3 DOUMA INT I-SGB 6.2 7300 11000 ZEDAN SAF R-354 *LOC only	
10400 027° 8800 7800 7800 GS 3.00° TCH 53 5.2 NM 4.1 NM 3.4 NM 1.2	
CATEGORY	A B C D
S-ILS 2	6503-¾ 200 (200-¾)
S-LOC 2	6740-1 437 (400-1) 6740-1¼ 437 (400-1¼)
CIRCLING	6800-1 451 (500-1) 6920-1 571 (600-1) 7340-3 991 (1000-3) 7660-3 1311 (1400-3)

