

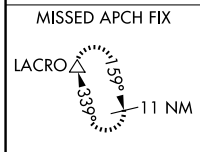
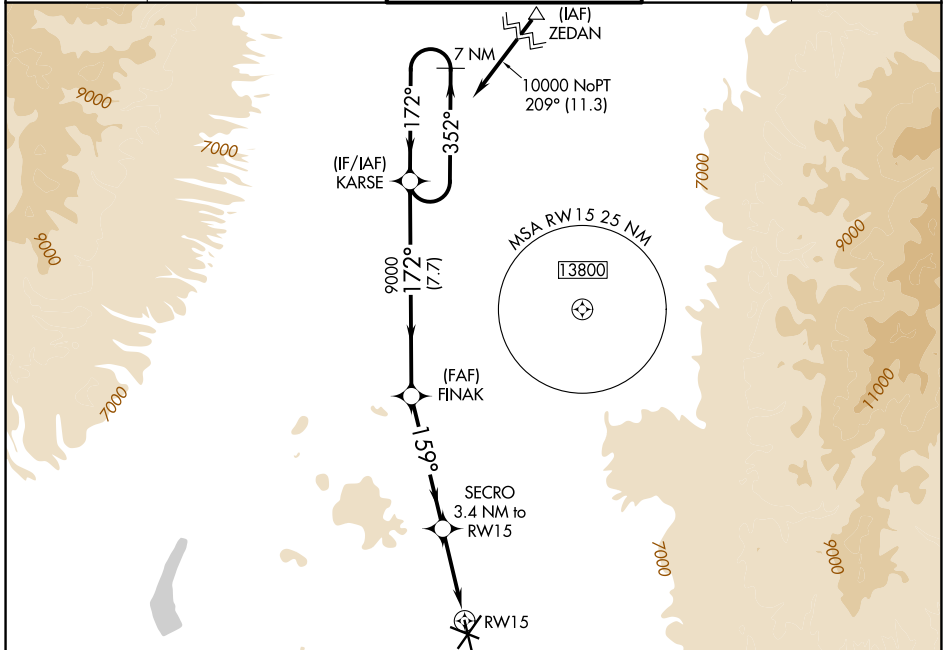
WAAS CH 87039 W15A	APP CRS 159°	Rwy Ldg TDZE Apt Elev	5221 6319 6349
----------------------------------------	------------------------	-----------------------------	-------------------------------------------

RNAV (GPS) RWY 15

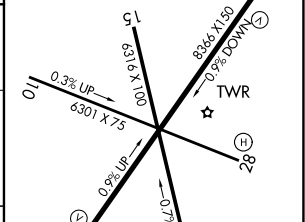
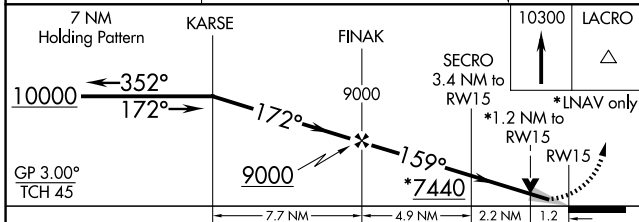
SANTA FE RGNL (SAF)

⚠ For uncompensated Baro-VNAV systems, LNAV/VNAV NA below -18°C (0°F) or above 47°C (117°F). DME/DME RNP-0.3 NA. MISSED APPROACH: Climb to 10300 direct LACRO and hold, continue climb-in-hold to 10300.

ATIS 128.55	ALBUQUERQUE CENTER 132.8 346.35	SANTA FE TOWER ★ 119.5 (CTAF) 0 239.3	GND CON 121.7	UNICOM 122.95
-----------------------	-------------------------------------------	-------------------------------------------------	-------------------------	-------------------------



ELEV 6349	D	TDZE 6319
-----------	----------	-----------



CATEGORY	A	B	C	D
LPV DA		6569-3/4	250 (300-3/4)	
LNAV/VNAV DA		6569-3/4	250 (300-3/4)	
LNAV MDA	6740-1	421 (400-1)	6740-1 1/4	421 (400-1 1/4)
CIRCLING	6800-1 451 (500-1)	6920-1 571 (600-1)	7340-3 991 (1000-3)	7660-3 1311 (1400-3)

REIL Rwy 10, 15, 20 and 33
MIRL Rwy 2-20 and 15-33

SW-1, 16 APR 2026 to 14 MAY 2026

SW-1, 16 APR 2026 to 14 MAY 2026