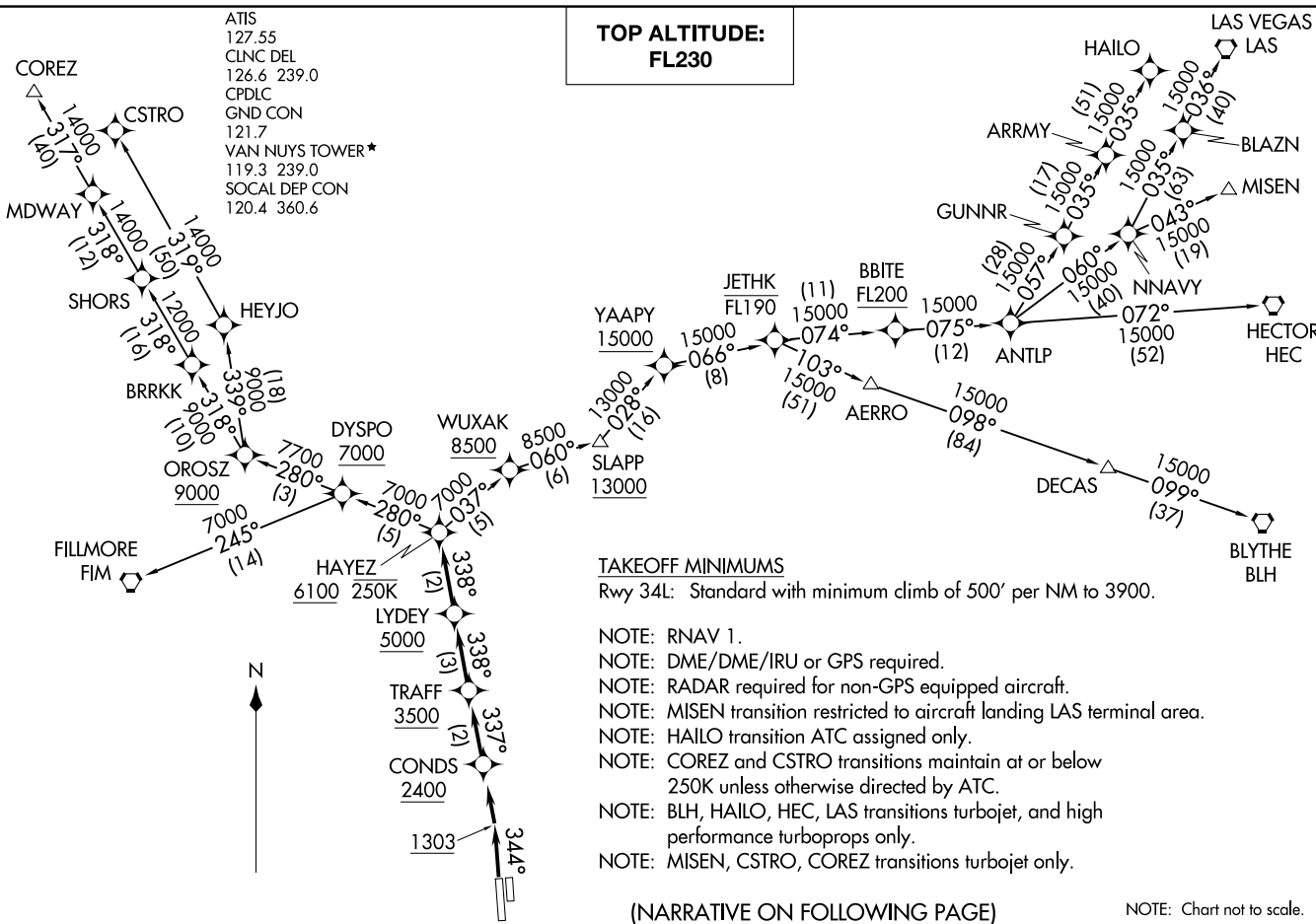


**TOP ALTITUDE:  
FL230**

ATIS  
127.55  
CLINC DEL  
126.6 239.0  
CPDLC  
GND CON  
121.7  
VAN NUYS TOWER\*  
119.3 239.0  
SOCAL DEP CON  
120.4 360.6

HAYEZ NINE DEPARTURE (RNAV)  
(HAYEZ9 HAYEZ) 10SEP20



**TAKEOFF MINIMUMS**

Rwy 34L: Standard with minimum climb of 500' per NM to 3900.

- NOTE: RNAV 1.
- NOTE: DME/DME/IRU or GPS required.
- NOTE: RADAR required for non-GPS equipped aircraft.
- NOTE: MISEN transition restricted to aircraft landing LAS terminal area.
- NOTE: HAIL0 transition ATC assigned only.
- NOTE: COREZ and CSTRO transitions maintain at or below 250K unless otherwise directed by ATC.
- NOTE: BLH, HAIL0, HEC, LAS transitions turbojet, and high performance turboprops only.
- NOTE: MISEN, CSTRO, COREZ transitions turbojet only.

(NARRATIVE ON FOLLOWING PAGE)

NOTE: Chart not to scale.

HAYEZ NINE DEPARTURE (RNAV)  
(HAYEZ9 HAYEZ) 20254

AL-552 (FAA)

VAN NUYS (VTNT)  
VAN NUYS, CALIFORNIA

HAYEZ NINE DEPARTURE (RNAV)  
(HAYEZ9 HAYEZ) 10SEP20

VAN NUYS, CALIFORNIA  
VAN NUYS (VTNT)



DEPARTURE ROUTE DESCRIPTION

TAKEOFF RUNWAY 34L: Climb on heading 344° to 1303, then climb direct to cross CONDS at or above 2400, then on track 337° to cross TRAFF at or above 3500, then on track 338° to cross LYDEY at or above 5000, then on track 338° to cross HAYEZ at or above 6100 and at or below 250K, thence . . . .

. . . . on (transition) maintain FL230. Expect filed altitude ten minutes after departure.

BLYTHE TRANSITION (HAYEZ9.BLH)

COREZ TRANSITION (HAYEZ9.COREZ)

CSTRO TRANSITION (HAYEZ9.CSTRO)

FILLMORE TRANSITION (HAYEZ9.FIM)

HAILO TRANSITION (HAYEZ9.HAILO)

HECTOR TRANSITION (HAYEZ9.HEC)

LAS VEGAS TRANSITION (HAYEZ9.LAS)

MISEN TRANSITION (HAYEZ9.MISEN)

SW-3, 16 APR 2026 to 14 MAY 2026

SW-3, 16 APR 2026 to 14 MAY 2026