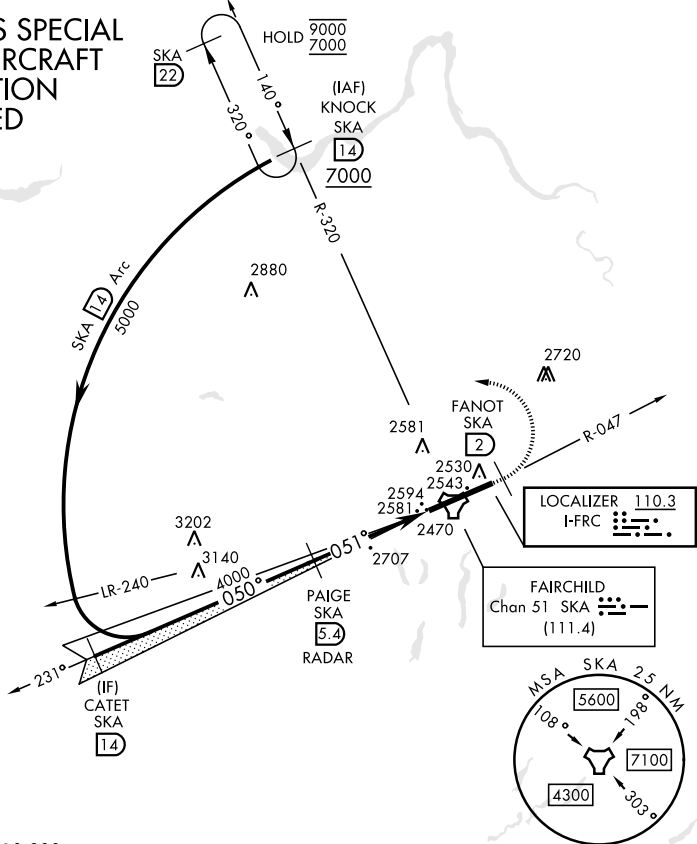


SPOKANE, WASHINGTON

# ILS RWY 5 (CAT II)

LOC I-FRC <b>110.3</b>	APCH CRS <b>051°</b>	Rwy Idg <b>13,899</b> TDZE <b>2462</b> Arpt Elev <b>2462</b>	[USAF]	FAIRCHILD AFB (KSKA)
RADAR required for KNOCK holding.			ALSIF-2	MISSED APPROACH: Climb to 7000 via SKA TACAN R-047. At FANOT turn left hdg 275° to intcp SKA R-320 to KNOCK and hold, continue climb in hold to 7000.
ATIS <b>257.625</b>	SPOKANE APP CON (208° - 028°) <b>123.75 282.25</b> 133.35 263.0 (029° - 207°)		TOWER <b>120.35 233.7</b>	GND CON <b>123.6 275.8</b>

## CATEGORY II ILS SPECIAL AIRCREW & AIRCRAFT CERTIFICATION REQUIRED



EMERG SAFE ALT 100 NM 10,900

CATET SKA 14 Intcp Lcwr	PAIGE SKA 5.4 RADAR	7000 SKA R-047	FANOT SKA 2 hdg 275°	SKA R-320	ELEV 2462	TDZE 2462
5000	4000	4000	4.6 NM	1192'	2569	2583
GS 3.00° TCH 58	050°	051°			2643	2685
CATEGORY	A	B	C	D	E	HIRL Rwy 5-23
S-ILS 5	RA 98/12		100	DA 2562		TDZL/RCLS Rwy 5

SPOKANE, WASHINGTON

47°37'N-117°39'W

FAIRCHILD AFB (KSKA)

Amtd 2 03NOV22

# ILS RWY 5 (CAT II)

NW-1, 16 APR 2026 to 14 MAY 2026

NW-1, 16 APR 2026 to 14 MAY 2026