

SPOKANE, WASHINGTON

ILS or LOC RWY 23

LOC I-SKA 110.3	APCH CRS 231°	Rwy Idg 13,899 TDZE 2423 Arprt Elev 2462
---------------------------	-------------------------	---

[USAF]

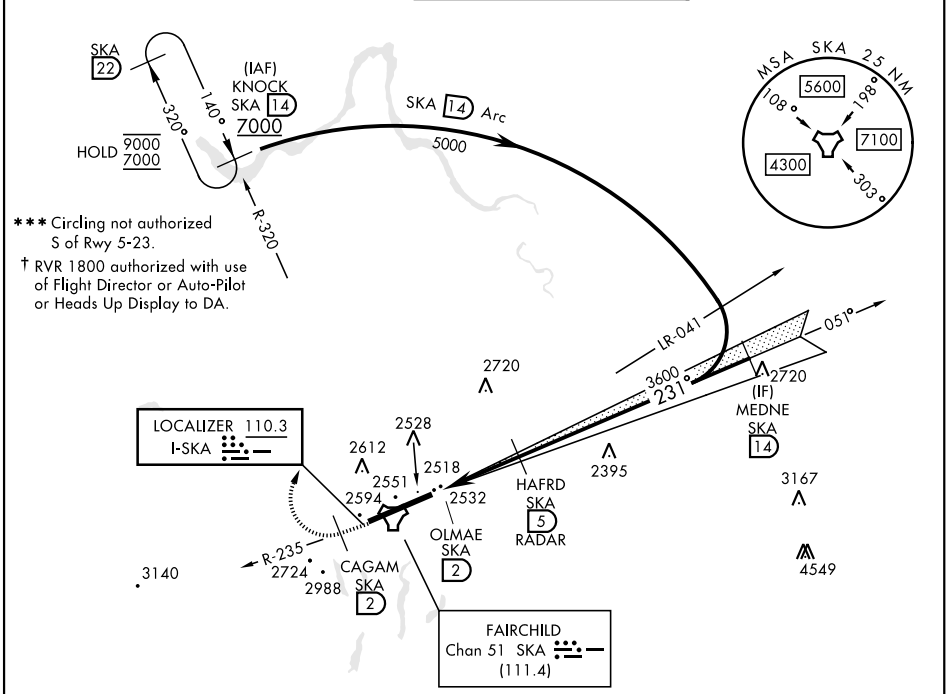
FAIRCHILD AFB (KSKA)

DME or RADAR reqrd for LOC. RADAR reqrd for KNOCK holding.

ALSF-1 

MISSED APPROACH: Climb to 7000 via SKA R-235. At CAGAM, turn right heading 005° to intcp SKA R-320 to KNOCK and hold, cont climb in hold to 7000.

ATIS 257.625	SPOKANE APP CON 123.75 282.25 <small>(208° - 028°) (029° - 207°)</small>	TOWER 120.35 233.7	GND CON 123.6 275.8
------------------------	---	------------------------------	-------------------------------

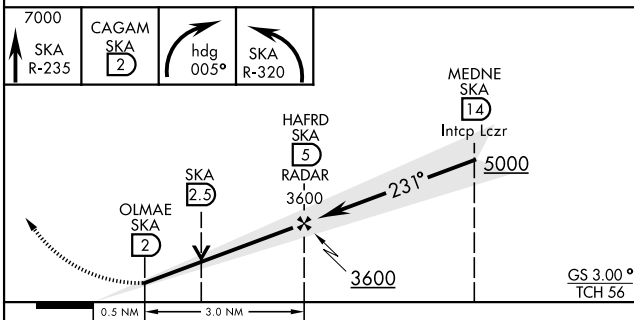


*** Circling not authorized S of Rwy 5-23.
† RVR 1800 authorized with use of Flight Director or Auto-Pilot or Heads Up Display to DA.

NW-1, 16 APR 2026 to 14 MAY 2026

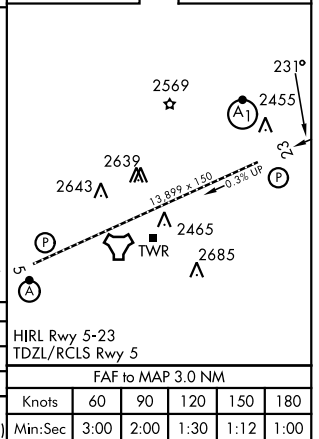
NW-1, 16 APR 2026 to 14 MAY 2026

EMERG SAFE ALT 100 NM 10,900



ELEV 2462	TDZE 2423
-----------	-----------

CATEGORY	A	B	C	D	E
S-ILS 23 *†	2623/24		200	(200-½)	
S-LOC 23 **	2800/24	377 (400-½)	2800/35	377	(400-¾)
CIRCLING ***	2900-1	2920-1	3040-1½	3040-2	3600-3
	438 (500-1)	458 (500-1)	578 (600-1½)	578 (600-2)	1138 (1200-3)



SPOKANE, WASHINGTON

47°37'N-117°39'W

FAIRCHILD AFB (KSKA)

Amdt 4 03NOV22

ILS or LOC RWY 23