

SPOKANE, WASHINGTON

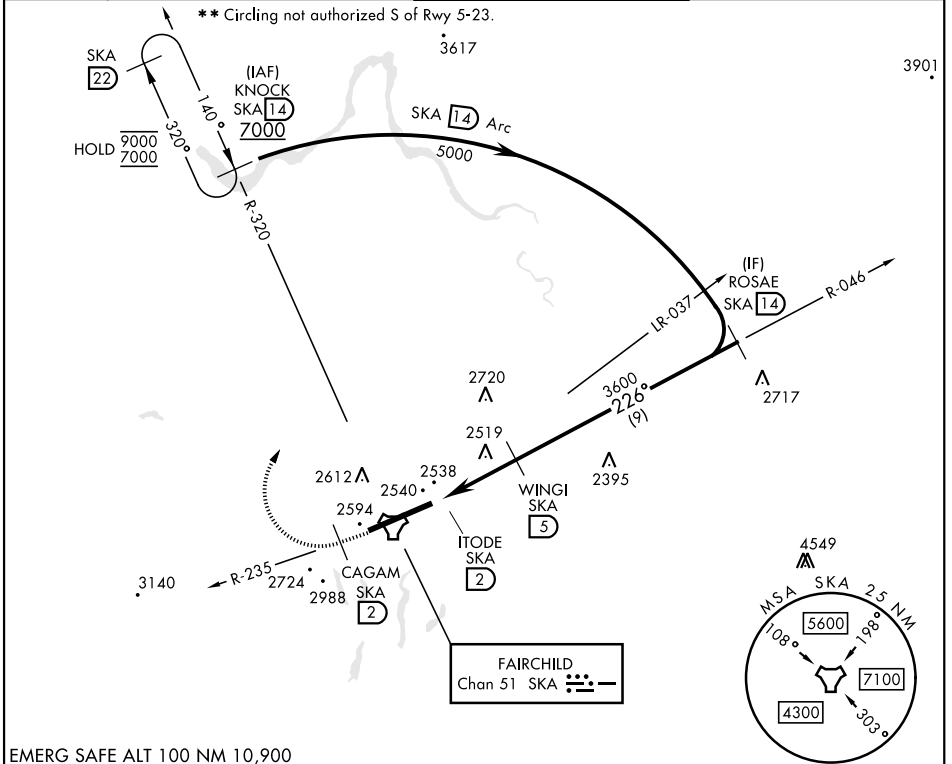
TACAN RWY 23

TACAN SKA Chan 51	APCH CRS 226°	Rwy Idg 13,899 TDZE 2423 Arprt Elev 2462
--------------------------	----------------------	---

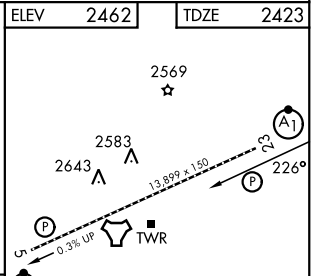
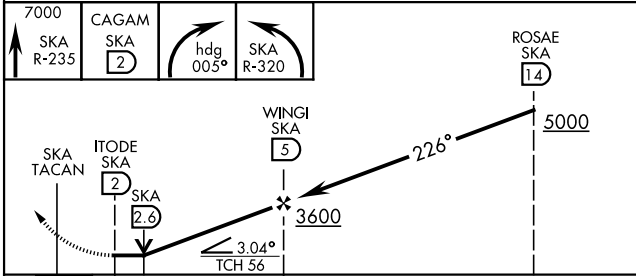
[USAF]

FAIRCHILD AFB (KSKA)

RADAR required for KNOCK holding.			ALSIF-1	MISSED APPROACH: Climb to 7000 via SKA TACAN R-235. At CAGAM, turn right hdg 005° to intcp SKA R-320 to KNOCK and hold, cont climb in hold to 7000.	
▼ * When ALS inop, increase CAT AB RVR to 55 and vis to 1 mile, CAT CDE RVR to 60, vis to 1½ miles.				TOWER	
ATIS 257.625	SPOKANE APP CON 123.75 282.25 133.35 263.0	(208° - 028°) (029° - 207°)		120.35 233.7	GND CON 123.6 275.8



EMERG SAFE ALT 100 NM 10,900



CATEGORY	A	B	C	D	E
S-23 *	2820/24	397 (400-½)	2820/35	397	(400-¾)
CIRCLING **	2900-1 438 (500-1)	2920-1 458 (500-1)	3040-1½ 578 (600-1½)	3040-2 578 (600-2)	3600-3 1138 (1200-3)

ELEV	2462	TDZE	2423
HIRL Rwy 5-23 TDZL/RCLS Rwy 5			

SPOKANE, WASHINGTON

47°37'N-117°39'W

FAIRCHILD AFB (KSKA)

Amtd 4 03NOV22

TACAN RWY 23

NW-1, 16 APR 2026 to 14 MAY 2026

NW-1, 16 APR 2026 to 14 MAY 2026