

ABERDEEN, MARYLAND

RNAV (GPS) RWY 22

(USA)

PHILLIPS AAF (ABERDEEN PROVING GROUND) (KAPG)

WAAS CH 70342 W22A	APCH CRS 218°	Rwy ldg TDZE Arprt Elev	8001 45 45
--------------------------	------------------	-------------------------------	------------------

RNP APCH-GPS	MISSED APPROACH: Climb to 500, then climbing right turn to 2000 direct SUDOY and hold.
--------------	----------------------------------------------------------------------------------------

POTOMAC APP CON/DEP CON 125.525 291.625	ADVSY 126.15 (CTAF) 0
--------------------------------------------	--------------------------

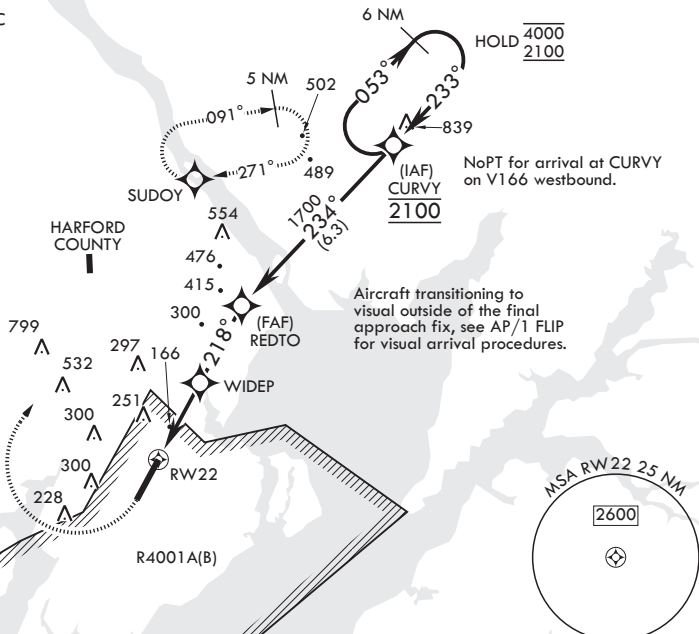
For uncompensated Baro-VNAV systems, LNAV/VNAV NA below -13°C (9°F) or above 54°C (130°F).

Baro-VNAV, VDP and Circling NA when using Baltimore altimeter setting.

When local altimeter setting not received, use Baltimore altimeter setting.

Helicopter visibility reduction below 3/4 mile not authorized.

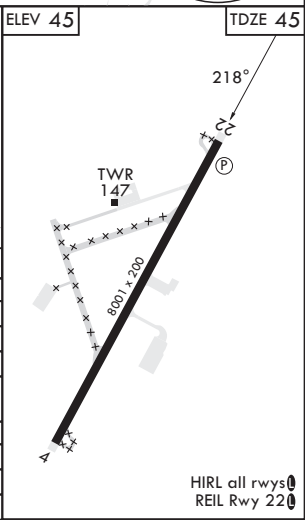
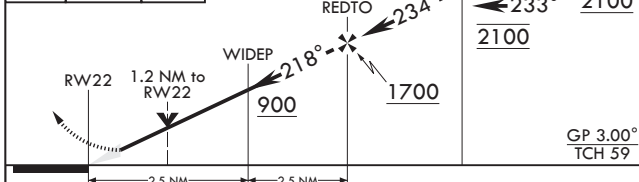
Inoperative table does not apply to LPV all CAT and LNAV CAT AB.



NE-3, 16 APR 2026 to 14 MAY 2026

NE-3, 16 APR 2026 to 14 MAY 2026

500	2000	SUDOY	VGSI and RNAV glidepath not coincident (VGSI Angle 3.00/TCH 49).	6 NM Holding Pattern	ELEV 45	TDZE 45
-----	------	-------	------------------------------------------------------------------	----------------------	---------	---------



CATEGORY	A	B	C	D
LPV DA	295-1		250	(300-1)
LNAV/VNAV DA	560-1 $\frac{3}{8}$		515	(600-1 $\frac{3}{8}$)
LNAV MDA	560-1	515 (600-1)	560-1 $\frac{1}{2}$	515 (600-1 $\frac{1}{2}$)
CIRCLING**	560-1	640-1	680-1 $\frac{1}{4}$	880-2 $\frac{1}{4}$
	515 (600-1)	595 (600-1)	635 (700-1 $\frac{1}{4}$)	835 (900-2 $\frac{1}{4}$)
BALTIMORE WASHINGTON INTL ALTIMETER SETTING MINIMUMS				
LPV DA	376-1 $\frac{1}{4}$		281	(300-1 $\frac{1}{4}$)
LNAV/VNAV DA	657-1 $\frac{3}{4}$		612	(600-1 $\frac{3}{4}$)
LNAV MDA	660-1 $\frac{1}{4}$	515 (700-1 $\frac{1}{4}$)	660-1 $\frac{1}{4}$	515 (700-1 $\frac{1}{4}$)

ABERDEEN, MARYLAND

39°28'N - 76°10'W PHILLIPS AAF (ABERDEEN PROVING GROUND) (KAPG)

Amdt 4 25DEC25

RNAV (GPS) RWY 22

HIRL all runways
REIL Rwy 22