

AIRPORT DIAGRAM

AL-556 (FAA)

AUSTIN-BERGSTROM INTL (AUS)
AUSTIN, TEXAS

CAUTION: BE ALERT TO RUNWAY CROSSING CLEARANCES.
READBACK OF ALL RUNWAY HOLDING INSTRUCTIONS IS REQUIRED.

D-ATIS 124.4
 AUSTIN TOWER 121.0 281.5
 GND CON 121.9 348.6
 CLNC DEL 125.5 263.0
 CPDLC PDC

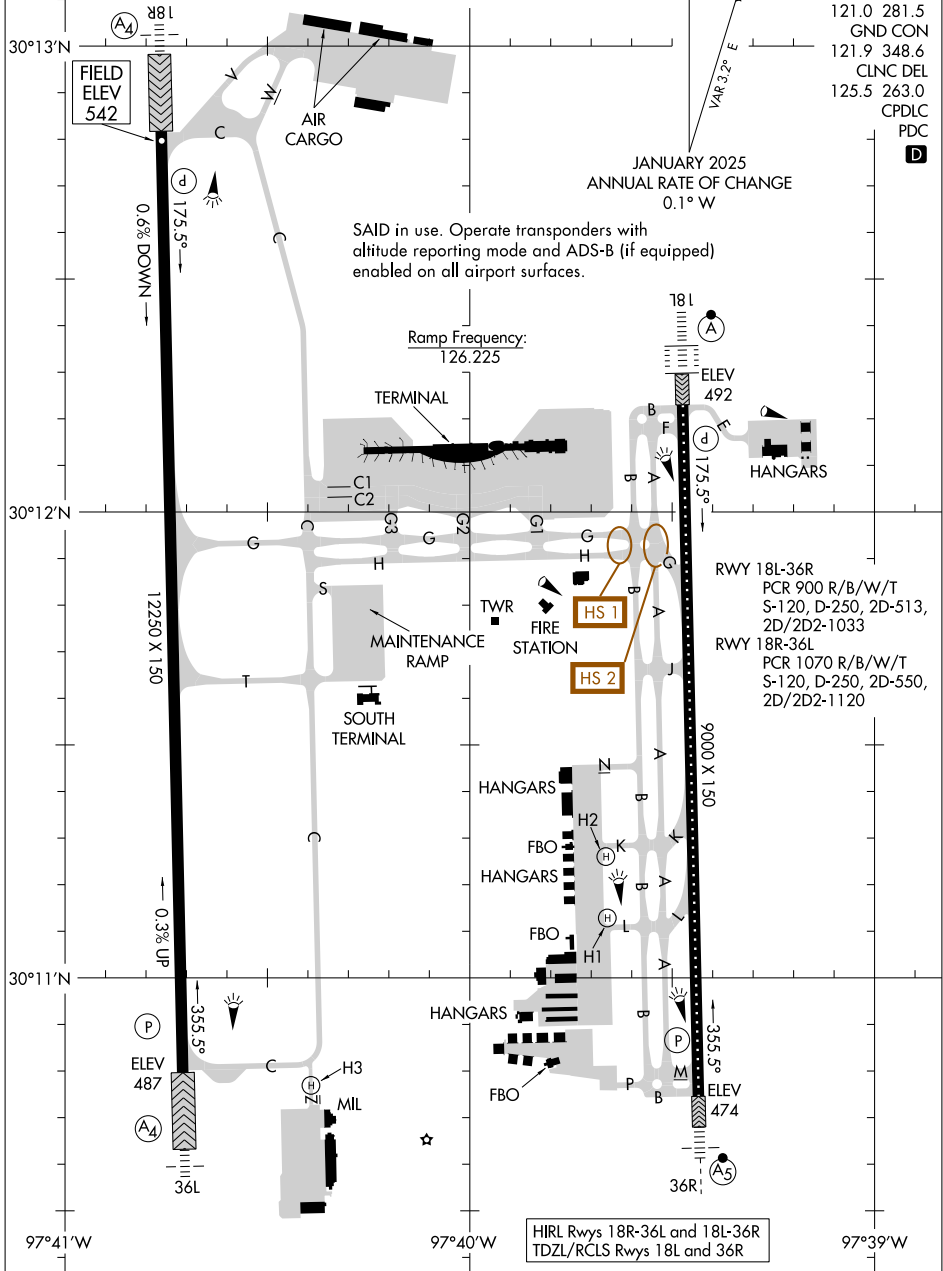
D

JANUARY 2025
ANNUAL RATE OF CHANGE
0.1° W

SAID in use. Operate transponders with altitude reporting mode and ADS-B (if equipped) enabled on all airport surfaces.

Ramp Frequency:
126.225

SC-3, 16 APR 2026 to 14 MAY 2026



HIRL Rwy 18R-36L and 18L-36R
TDZL/RCLS Rwy 18L and 36R

SC-3, 16 APR 2026 to 14 MAY 2026