

LOC/DME I-GFQ 110.95 Chan 46(Y)	APP CRS 175°	Rwy Ldg 12250 TDZE 542 Apt Elev 542
---	------------------------	--

ILS or LOC RWY 18R

AUSTIN-BERGSTROM INTL (AUS)

RNAV 1-GPS or RADAR required for procedure entry.
From HOUKM, JEDYE: RNAV 1-GPS required.

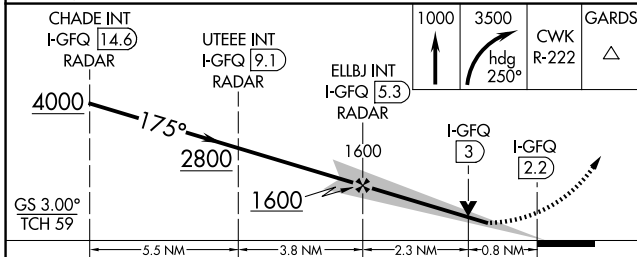
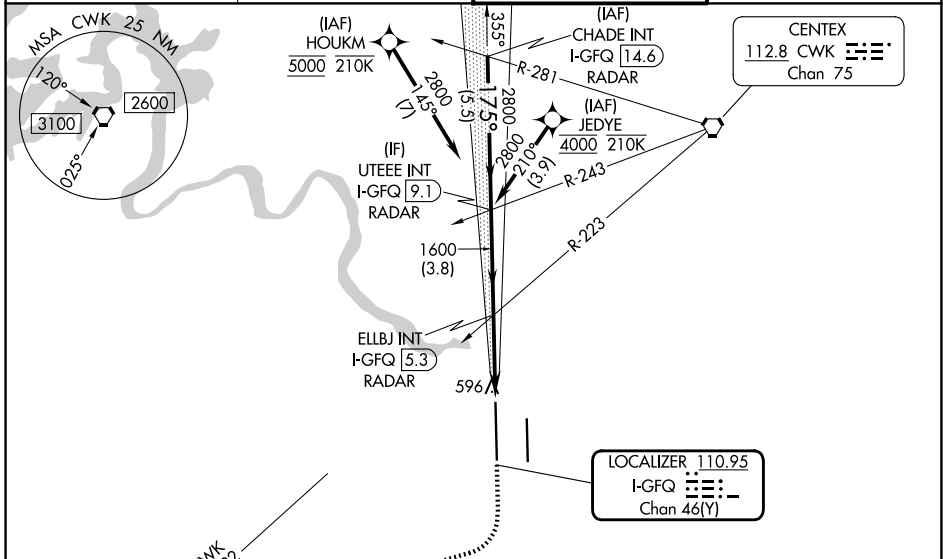
MALS

MISSED APPROACH: Climb to 1000 then climbing right turn to 3500 on heading 250° and CWK VORTAC R-222 to GARDS INT/CWK 29.2 DME and hold.

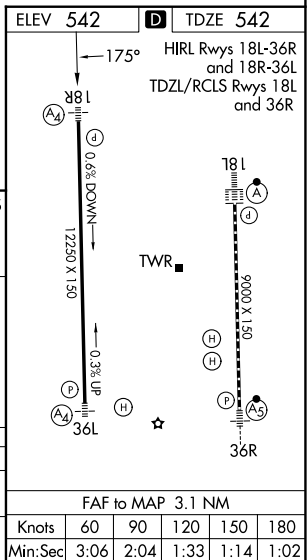
(A4)

Simultaneous approach authorized. Inop table does not apply to S-ILS 18R. For inop ALS, increase S-LOC-18R Cats C, D and E visibility to RVR 4500.

D-ATIS 124.4	AUSTIN APP CON 127.225 317.65 (E) 120.875 270.25 (S) 119.0 370.85 (W)	AUSTIN TOWER 121.0 281.5	GND CON 121.9 348.6
------------------------	---	------------------------------------	-------------------------------



CATEGORY	A	B	C	D	E
S-ILS 18R		742/40	200 (200-¾)		
S-LOC 18R		860/40	318 (400-¾)		



FAF to MAP 3.1 NM					
Knots	60	90	120	150	180
Min:Sec	3:06	2:04	1:33	1:14	1:02