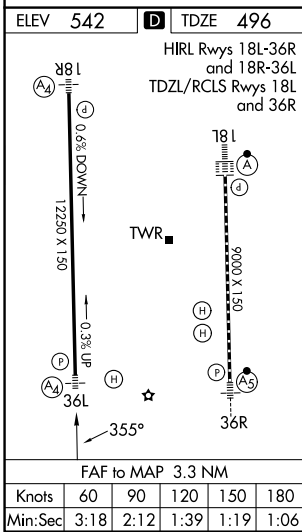
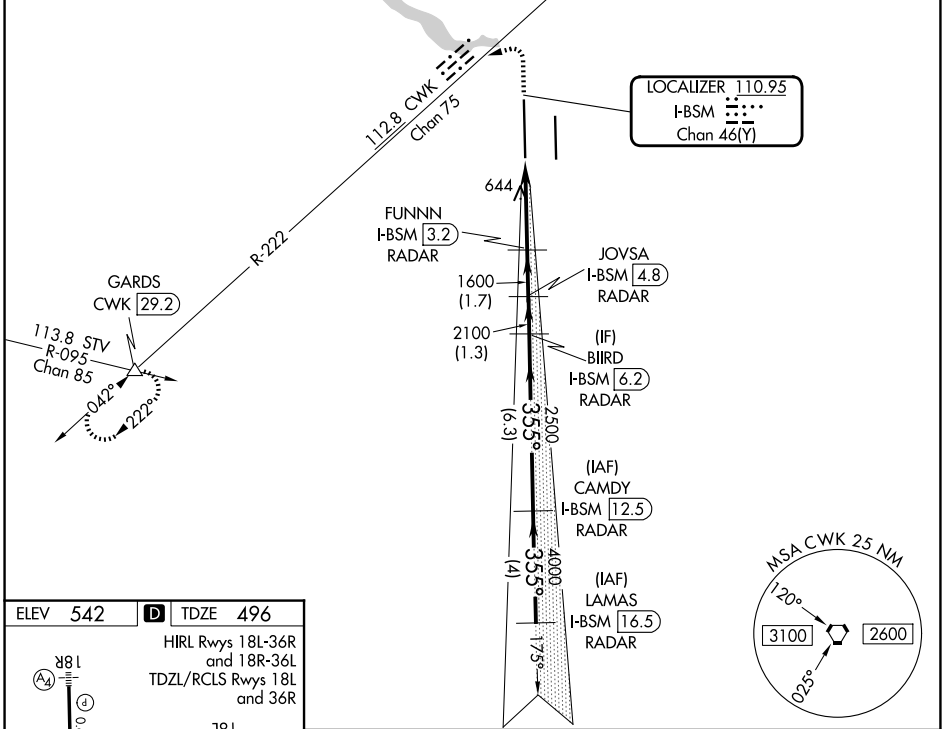


LOC/DME I-BSM 110.95 Chan 46(Y)	APP CRS 355°	Rwy Ldg 12250 TDZE 496 Apt Elev 542
---	------------------------	--

ILS or LOC RWY 36L

AUSTIN-BERGSTROM INTL (AUS)

DME or RADAR required.		MALS	MISSED APPROACH: Climb to 1000 then climbing left turn to 3500 on heading 250° and CWK VORTAC R-222 to GARDS INT/CWK 29.2 DME and hold.
▼ Simultaneous approach authorized. For inop ALS, increase S-LOC 36L Cats C/D/E visibility to RVR 6000. Inop table does not apply to S-ILS 36L all Cats.	AUSTIN APP CON 127.225 317.65 (E) 120.875 270.25 (S) 119.0 370.85 (W)	AUSTIN TOWER 121.0 281.5	GND CON 121.9 348.6



1000	3500	CWK R-222	GARDS	VGSi and ILS glidepath not coincident (VGSi Angle 3.00/TCH 60).		LAMAS I-BSM 16.5 RADAR		
↑	hdg 250°			BIIRD I-BSM 6.2 RADAR	CAMDY I-BSM 12.5 RADAR			
		I-BSM ANTENNA	FUNNN I-BSM 3.2 RADAR	JOVSA I-BSM 4.8 RADAR				
		I-BSM 0.2	I-BSM 0.9					
			1600	2100	2500	4000		
			1600			5000		
						GS 3.00° TCH 54		
			1.1 NM	2.2 NM	1.7 NM	1.3 NM	6.3 NM	4 NM
CATEGORY	A	B	C	D	E			
S-ILS 36L	696/40 200 (200-¾)							
S-LOC 36L	900/40	404 (400-¾)	900/50 404 (400-1)					

SC-3, 16 APR 2026 to 14 MAY 2026

SC-3, 16 APR 2026 to 14 MAY 2026