

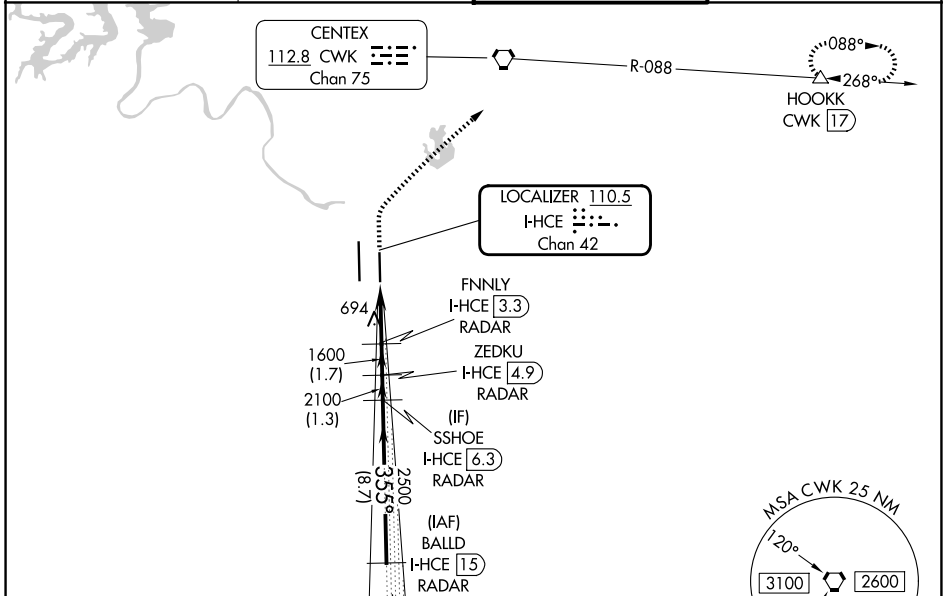
LOC/DME I-HCE 110.5 Chan 42	APP CRS 355°	Rwy Ldg 9000 TDZE 480 Apt Elev 542
---	------------------------	---

ILS or LOC RWY 36R

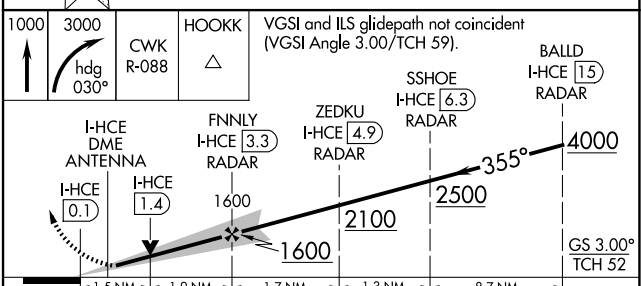
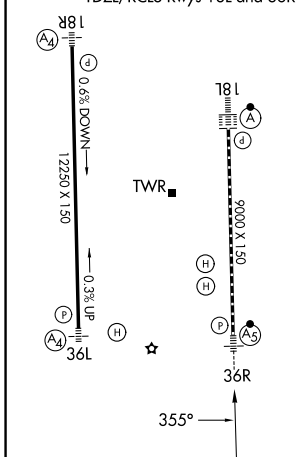
AUSTIN-BERGSTROM INTL (AUS)

DME required. RADAR required for procedure entry.	MALSR 	MISSED APPROACH: Climb to 1000 then climbing right turn to 3000 on heading 030° and CWK VORTAC R-088 to HOOKK/CWK 17 DME and hold.
<p>Simultaneous approach authorized. For inop ALS, increase S-ILS 36R Cat E visibility to RVR 4000, S-LOC 36R Cat C/D/E visibility to 1/2 SM.</p>		

D-ATIS 124.4	AUSTIN APP CON 127.225 317.65 (E) 120.875 270.25 (S) 119.0 370.85 (W)	AUSTIN TOWER 121.0 281.5	GND CON 121.9 348.6
------------------------	---	------------------------------------	-------------------------------



ELEV 542	D TDZE 480
HIRL Rwy 18R-36L and 18L-36R TDZL/RCLS Rwy 18L and 36R	



1000	3000	CWK R-088	HOOKK	VGSI and ILS glidepath not coincident (VGSI Angle 3.00/TCH 59).		BALLD I-HCE [15] RADAR
I-HCE DME ANTENNA		FNNLY I-HCE [3.3] RADAR	ZEDKU I-HCE [4.9] RADAR	SSHOE I-HCE [6.3] RADAR	BALLD I-HCE [15] RADAR	
I-HCE [0.1]	I-HCE [1.4]	1600	2100	2500	4000	
-1.5 NM		-1.9 NM	-1.7 NM	-1.3 NM	-8.7 NM	
CATEGORY	A	B	C	D	E	
S-ILS 36R	680/18		200 (200-1/2)			
S-LOC 36R	1000/24	520 (500-1/2)	1000/55		520 (500-1)	
CIRCLING	1040-1 498 (500-1)	1120-1 578 (600-1)	1200-1 3/4 658 (700-1 1/4)	1200-2 658 (700-2)	NA	

SC-3, 16 APR 2026 to 14 MAY 2026

SC-3, 16 APR 2026 to 14 MAY 2026