

RNAV (RNP) Z RWY 18L

AUSTIN-BERGSTROM INTL (AUS)

APP CRS	Rwy Ldg	9000
175°	TDZE	492
	Apt Elev	542

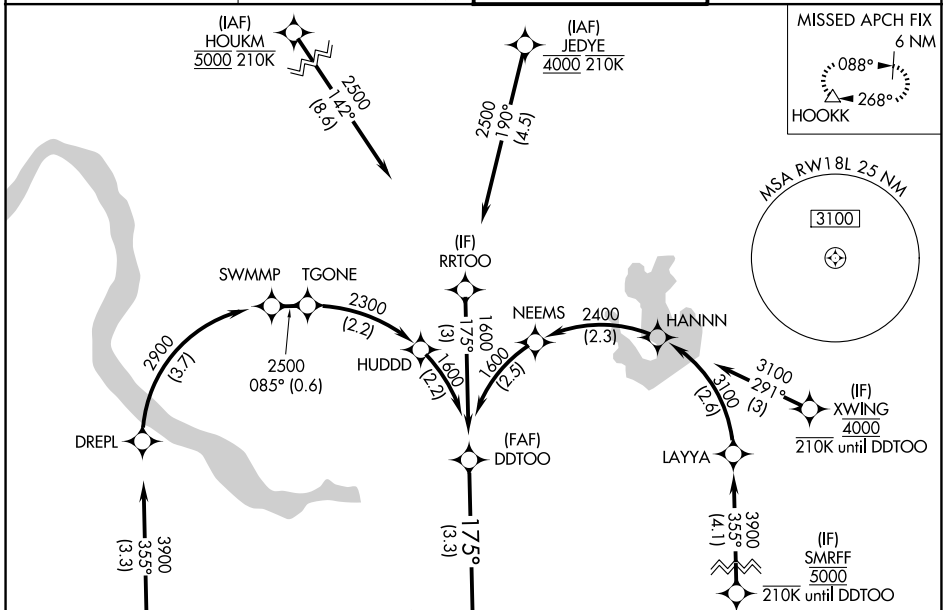
RADAR required. RNP AR APCH-GPS.

⚠ Simultaneous approach authorized. For uncompensated Baro-VNAV systems, procedure NA below -5°C or above 54°C.

ALSf-2

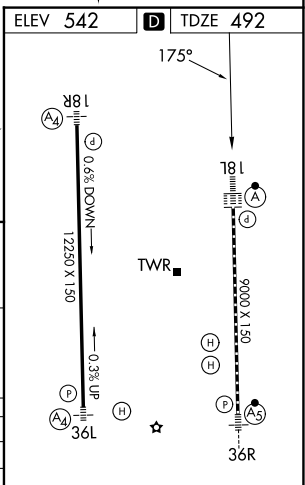
MISSED APPROACH: Climb to 1000 then climbing left turn to 3000 direct HOOKK and hold.

D-ATIS 124.4	AUSTIN APP CON 127.225 317.65 (E) 120.875 270.25 (S) 119.0 370.85 (W)	AUSTIN TOWER 121.0 281.5	GND CON 121.9 348.6
------------------------	---	------------------------------------	-------------------------------



SC-3, 16 APR 2026 to 14 MAY 2026

SC-3, 16 APR 2026 to 14 MAY 2026



DDTOO	1600	1600	1000	3000	HOOKK
GP 3.00° TCH 61	See planview for multiple IF locations.		3.3 NM		

CATEGORY	A	B	C	D
RNP 0.24 DA		825/26	333 (300-½)	
RNP 0.30 DA		885/35	393 (400-⅙)	

AUTHORIZATION REQUIRED

HIRL Rwy 18L-36R and 18R-36L
TDZL/RCLS Rwy 18L and 36R