



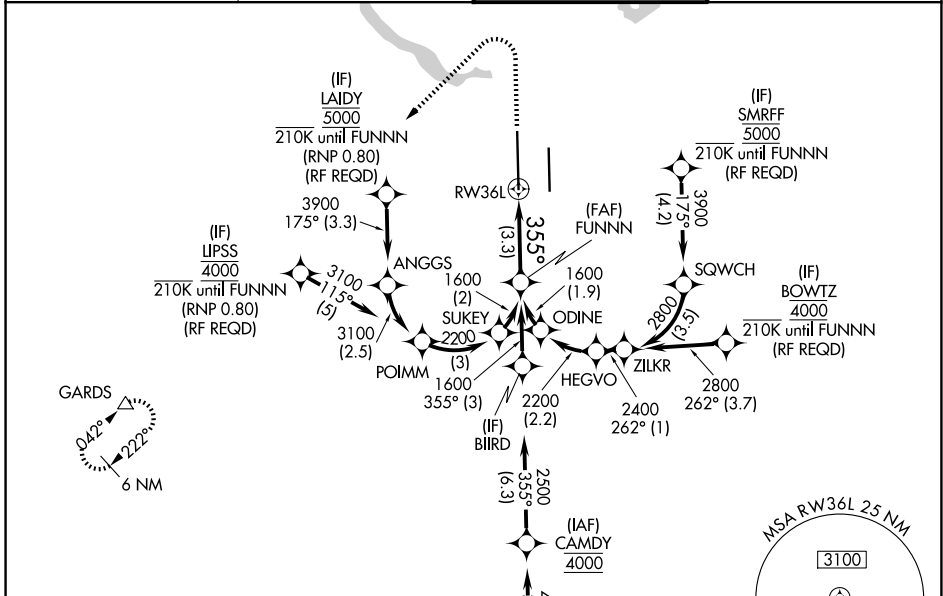
APP CRS	Rwy Ldg	12250
355°	TDZE	496
	Apt Elev	542

RNAV (RNP) Z RWY 36L

AUSTIN-BERGSTROM INTL (AUS)

RNP AR APCH. RADAR required.	MALS 	MISSED APPROACH: Climb to 1700 then climbing left turn to 3500 direct GARDS and hold.
<p>▼ Simultaneous approach authorized. For uncompensated Baro-VNAV systems, procedure NA below -5°C or above 54°C. For inop ALS, increase RNP 0.11 all Cats visibility to RVR 4500 and RNP 0.30 all Cats visibility to RVR 5500.</p>		

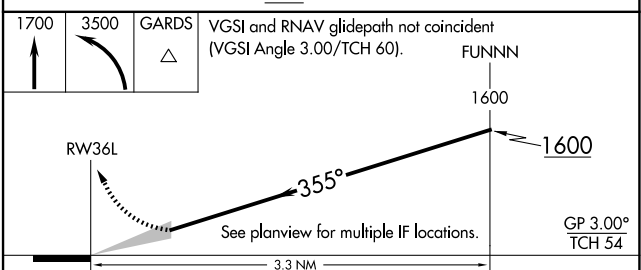
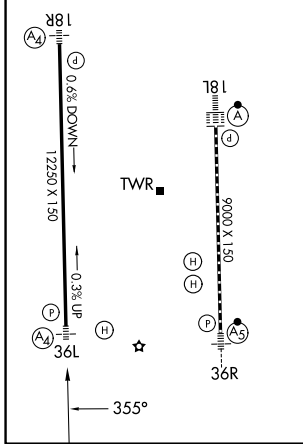
D-ATIS 124.4	AUSTIN APP CON 127.225 317.65 (E) 120.875 270.25 (S) 119.0 370.85 (W)	AUSTIN TOWER 121.0 281.5	GND CON 121.9 348.6
------------------------	---	------------------------------------	-------------------------------



SC-3, 16 APR 2026 to 14 MAY 2026

SC-3, 16 APR 2026 to 14 MAY 2026

ELEV 542	D TDZE 496
HIRL Rwy 18L-36R and 18R-36L TDZL/RCLS Rwy 18L and 36R	



CATEGORY	A	B	C	D
RNP 0.11 DA		758/40	262 (300-¾)	
RNP 0.30 DA		858/40	362 (400-¾)	

AUTHORIZATION REQUIRED