

RNAV (RNP) Z RWY 36R


AUSTIN-BERGSTROM INTL (AUS)

APP CRS	Rwy Ldg	9000
355°	TDZE	480
	Apt Elev	542

RNP AR APCH. RADAR required.

Simultaneous approach authorized. For uncompensated Baro-VNAV systems, procedure NA below -5°C or above 54°C. For inop ALS, increase RNP 0.11 all Cats visibility to RVR 4500, RNP 0.16 all Cats visibility to RVR 6000, and RNP 0.30 all Cats visibility to 1 1/4 SM.

MALSR

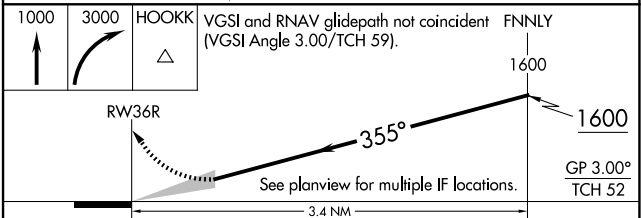
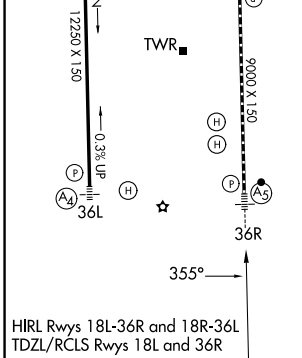
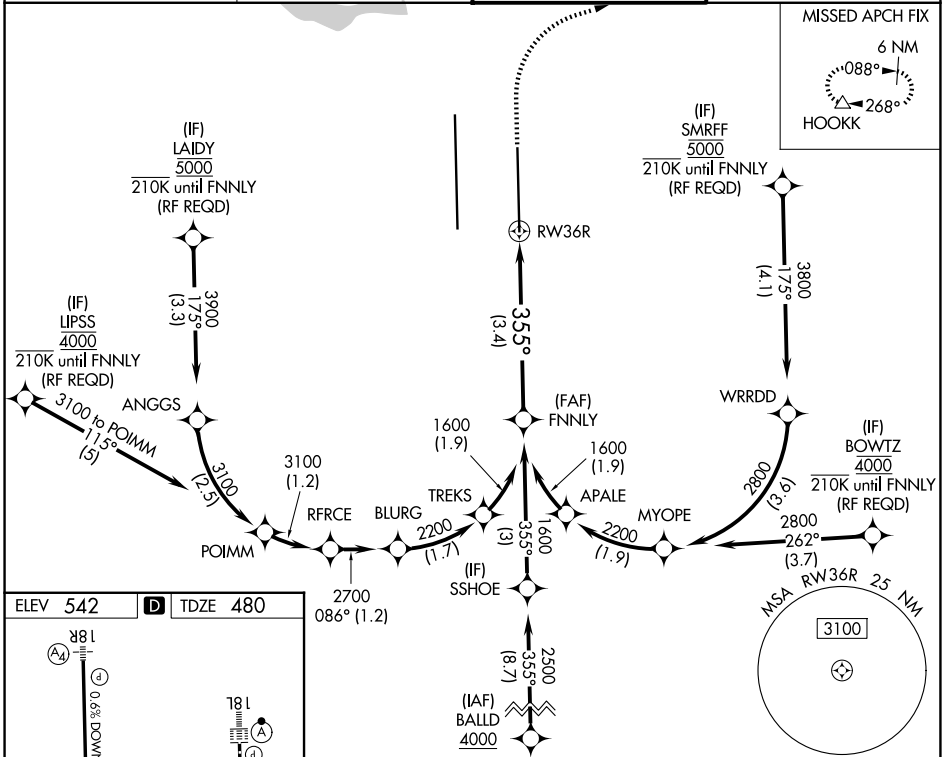


MISSED APPROACH: Climb to 1000 then climbing right turn to 3000 direct HOOKK and hold.

D-ATIS	AUSTIN APP CON
124.4	127.225 317.65 (E)
	120.875 270.25 (S)
	119.0 370.85 (W)

AUSTIN TOWER
121.0 281.5

GND CON
121.9 348.6



CATEGORY	A	B	C	D
RNP 0.11 DA		744/24	264 (300-1/2)	
RNP 0.16 DA		862/35	382 (400-3/8)	
RNP 0.30 DA		915/40	435 (400-3/4)	

AUTHORIZATION REQUIRED

SC-3, 16 APR 2026 to 14 MAY 2026

SC-3, 16 APR 2026 to 14 MAY 2026