

|  |                        |   |
|--|------------------------|---|
| WAAS<br>CH <b>62829</b><br><b>W18A</b> | APP CRS<br><b>175°</b> | Rwy Ldg<br>TDZE <b>492</b><br>Apt Elev <b>542</b> |
|--|------------------------|---|

# RNAV (GPS) Y RWY 18L

AUSTIN-BERGSTROM INTL (AUS)

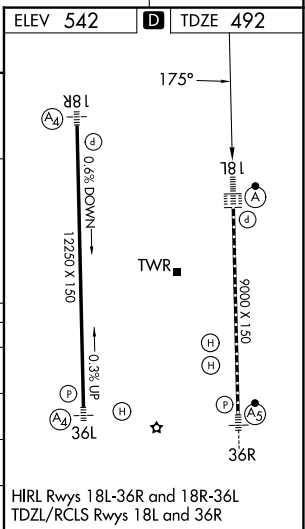
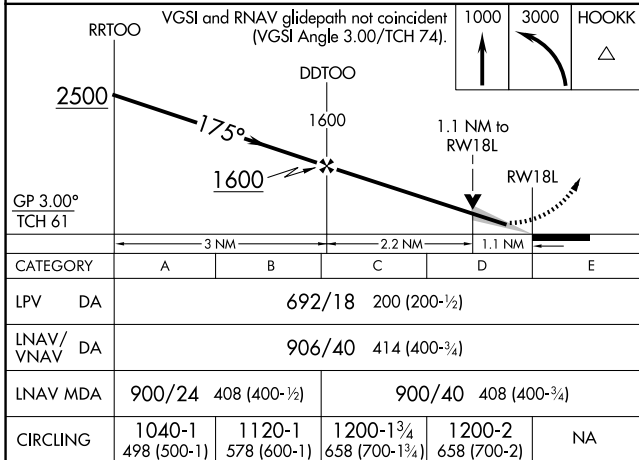
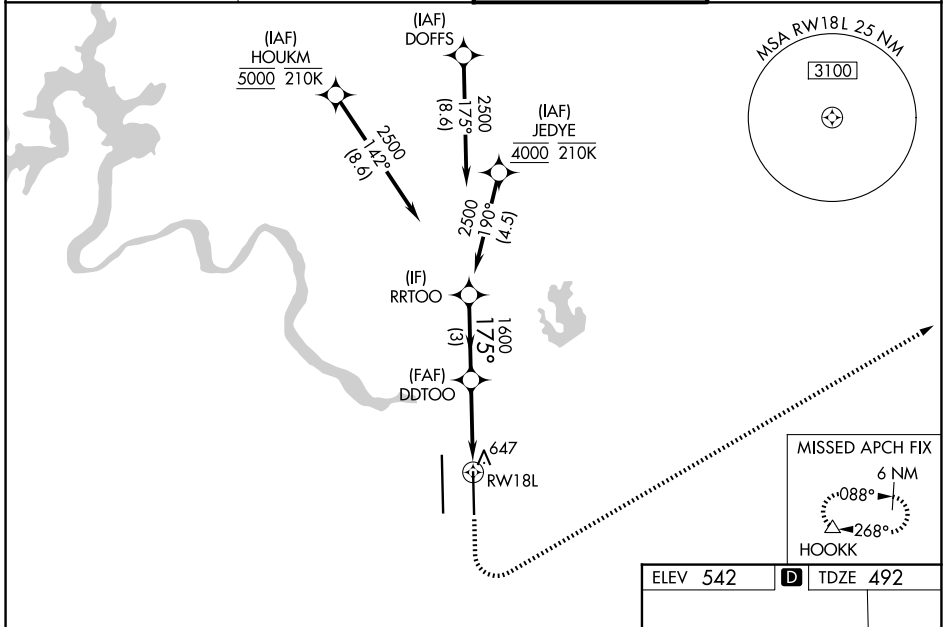
**RNP APCH-GPS.**

Simultaneous approach authorized. LNAV procedure NA during simultaneous operations. For uncompensated Baro-VNAV systems, LNAV/VNAV NA below -5°C or above 54°C. Use of FD or AP required during simultaneous operations. For inop ALS, increase LPV Cat E visibility to RVR 4000, LNAV/VNAV visibility all Cats to RVR 6000, and LNAV visibility Cats C, D, and E to RVR 6000.

ALSF-2

MISSED APPROACH: Climb to 1000 then climbing left turn to 3000 direct HOOKK and hold.

|                        |   |                                    |                               |
|------------------------|---|------------------------------------|-------------------------------|
| D-ATIS<br><b>124.4</b> | AUSTIN APP CON<br><b>127.225 317.65 (E)</b><br><b>120.875 270.25 (S)</b><br><b>119.0 370.85 (W)</b> | AUSTIN TOWER<br><b>121.0 281.5</b> | GND CON<br><b>121.9 348.6</b> |
|------------------------|---|------------------------------------|-------------------------------|



SC-3, 16 APR 2026 to 14 MAY 2026

SC-3, 16 APR 2026 to 14 MAY 2026