

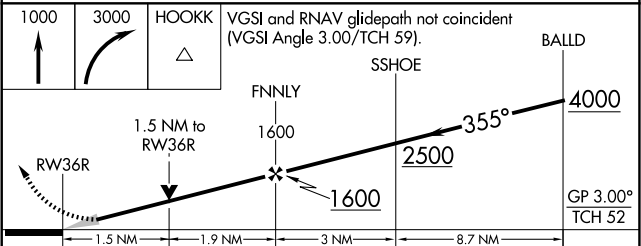
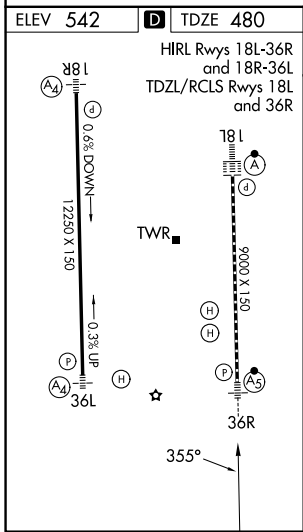
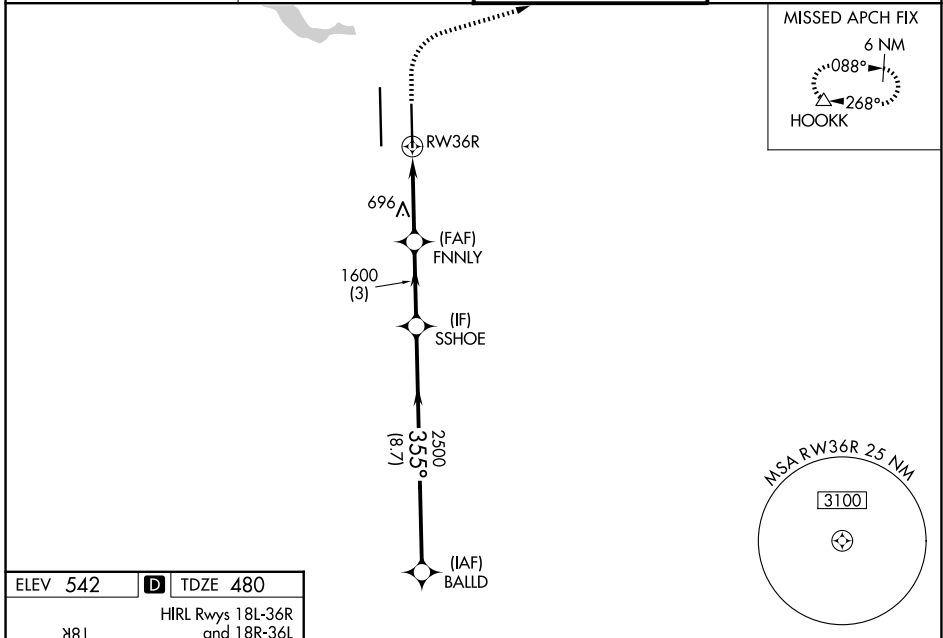
WAAS CH <b>99429</b> <b>W36B</b>	APP CRS <b>355°</b>	Rwy Ldg TDZE Apt Elev	<b>9000</b> <b>480</b> <b>542</b>
--	------------------------	-----------------------------	---

# RNAV (GPS) Y RWY 36R

AUSTIN-BERGSTROM INTL (AUS)

RNP APCH-GPS.	MALSRL	MISSED APPROACH: Climb to 1000 then climbing right turn to 3000 direct HOOKK and hold.
<p>▼ Use of FD or AP required during simultaneous operations. Simultaneous approach authorized. LNAV procedure NA during simultaneous operations. For uncompensated Baro-VNAV systems, LNAV/VNAV NA below -5°C or above 54°C. For inop ALS increase LPV Cat E visibility to RVR 4000, LNAV/VNAV all Cats visibility to 1 3/8 SM and LNAV Cat C/D/E visibility to 1 3/8 SM.</p>		

D-ATIS <b>124.4</b>	AUSTIN APP CON <b>127.225 317.65 (E)</b> <b>120.875 270.25 (S)</b> <b>119.0 370.85 (W)</b>	AUSTIN TOWER <b>121.0 281.5</b>	GND CON <b>121.9 348.6</b>
------------------------	---	------------------------------------	-------------------------------



CATEGORY	A	B	C	D	E
LPV DA	680/18 200 (200-1/2)				
LNAV/VNAV DA	970/50 490 (500-1)				
LNAV MDA	1000/24	520 (500-1/2)	1000/55		520 (500-1)
CIRCLING	1040-1 498 (500-1)	1120-1 578 (600-1)	1200-1 3/4 658 (700-1 3/4)	1200-2 658 (700-2)	NA