

25219

# JEFSN TWO DEPARTURE (RNAV) (JEFSN2.JEFSN)

JOINT BASE ANDREWS (ANDREWS AFB) (KADW)  
CAMP SPRINGS, MARYLAND

ATIS 133.675 251.05

RNAV1-GPS

[USAF]

**TOP ALTITUDE:**

RADAR required

**3000**

GND CON  
121.8 275.8

ANDREWS TOWER

118.4 349.0

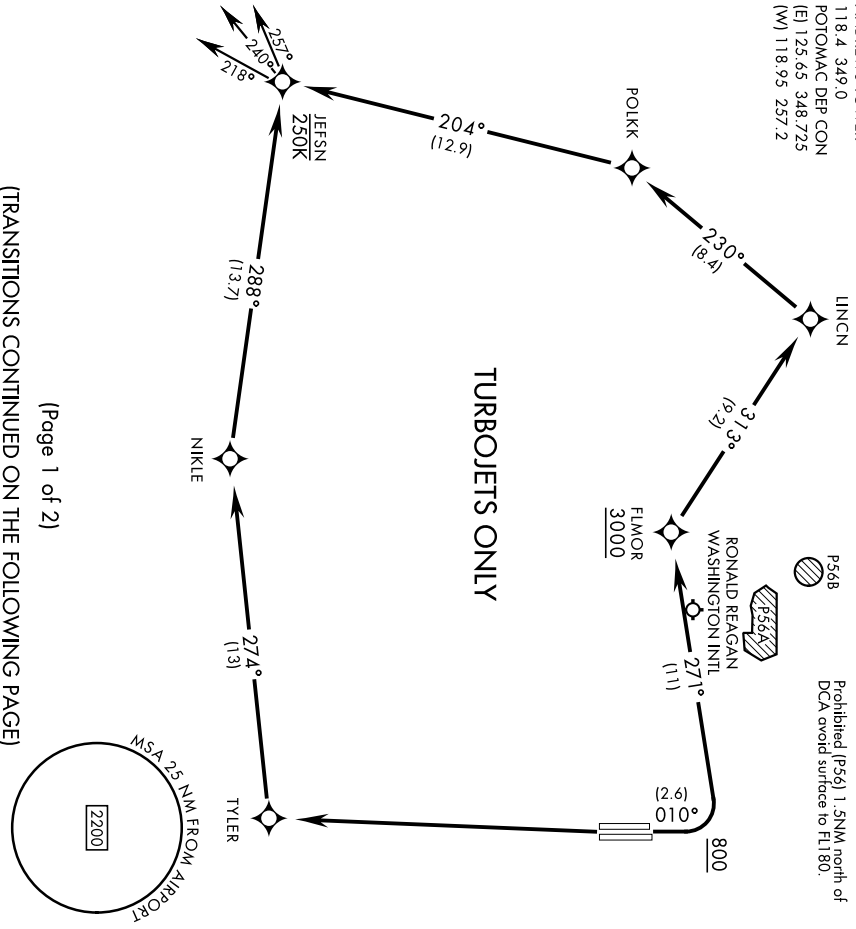
POTOMAC DEP CON  
(E) 125.65 348.725

(W) 118.95 257.2



P568

Max 250 KIAS until JEFSN  
Prohibited (P56) 1.5NM north of  
DCA avoid surface to FL800.



(Page 1 of 2)

(TRANSITIONS CONTINUED ON THE FOLLOWING PAGE)

## DEPARTURE ROUTE DESCRIPTION

▼ TAKEOFF RWY 1L/R: Climb on heading 010° to 800, then climbing left turn to 3000 direct FLMOR. Then via depicted route to JEFSN, hence...

TAKEOFF RWY 19L/R: Climb direct TYLER then via depicted route to JEFSN, hence...

... on assigned transition. Maintain 3000, expect further clearance to filed alt within ten (10) minutes after departure.

FLASK TRANSITION (JEFSN2.FLASK)

GLANC TRANSITION (JEFSN2.GLANC)

MAULS TRANSITION (JEFSN2.MAULS)

MELTN TRANSITION (JEFSN2.MELTN)

RRSIN TRANSITION (JEFSN2.RRSIN)

## JEFSN TWO DEPARTURE (RNAV) (JEFSN2.JEFSN)

Orig 31OCT24

CAMP SPRINGS, MARYLAND  
JOINT BASE ANDREWS (ANDREWS AFB) (KADW)

25219

# JEFSN TWO DEPARTURE (RNAV) (JEFSN2.JEFSN)

JOINT BASE ANDREWS (ANDREWS AFB) (KADW)  
CAMP SPRINGS, MARYLAND

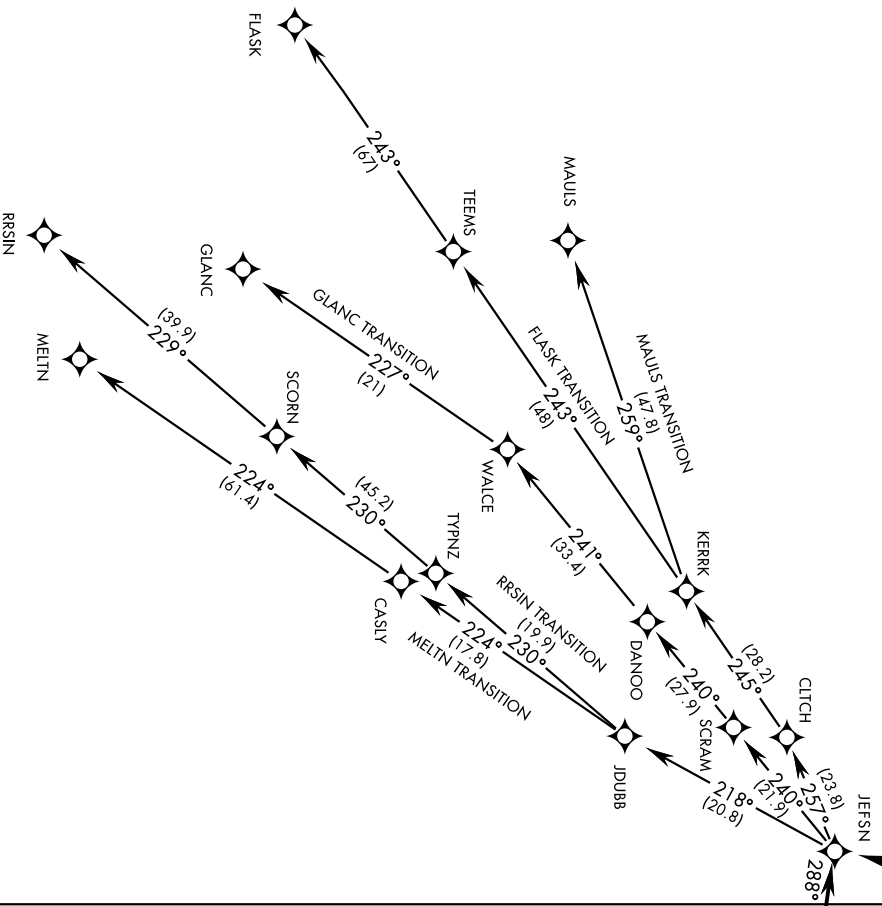
**TOP ALTITUDE:**

**3000**

RNAV-GPS

RADAR required

[USAF]



NE-3, 16 APR 2026 to 14 MAY 2026

(Page 2 of 2)

NOTE: Chart not to scale

## TURBOJET ONLY

### JEFSN TWO DEPARTURE (RNAV) (JEFSN2.JEFSN)

Orig 31OCT24

CAMP SPRINGS, MARYLAND  
JOINT BASE ANDREWS (ANDREWS AFB) (KADW)