

LOC/DME I-ARK 110.95 Chan 46(Y)	APP CRS 185°	Rwy Ldg 9001	TDZE 90	Apt Elev 96
--	------------------------	-----------------	------------	----------------

ILS RWY 17L (CAT II & III)

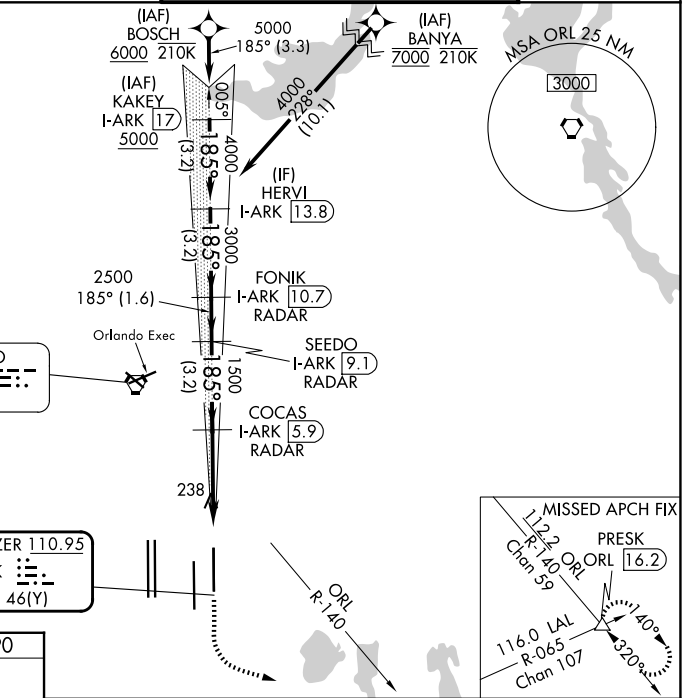
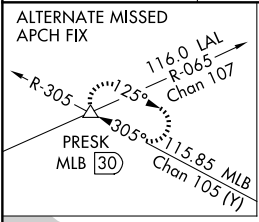
ORLANDO INTL (MCO)

RNAV 1-DME/DME/IRU or GPS or RADAR required for procedure entry. DME or RADAR required.

ALSF-2
MISSED APPROACH: Climb to 500 then climbing left turn to 3000 on heading 100° and ORL VORTAC R-140 to PRESK INT/ORL 16.2 DME and hold, continue climb-in-hold to 3000.

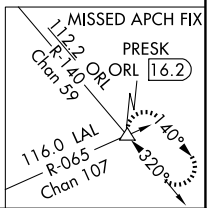
▼ Bright lights on highway midway between Rwy 17L and Rwy 17R may be mistaken for runway lights. Simultaneous approach authorized.

D-ATIS 121.25	ORLANDO APP CON 124.8 307.0	118.45 253.5 124.3 253.5	ORLANDO TOWER 118.45 253.5 (17L/35R, 17R/35L) 124.3 253.5 (18L/36R, 18R/36L)	GND CON 126.4 (E) 121.8 (W)
-------------------------	---------------------------------------	---	--	---

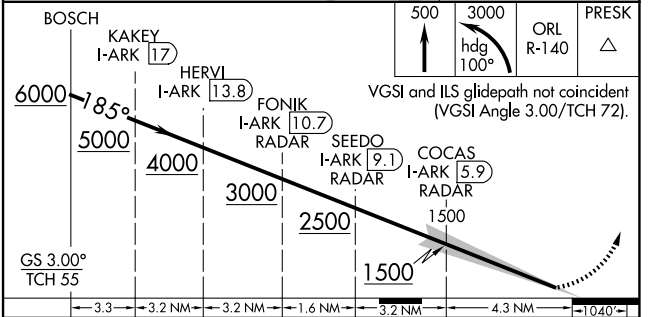
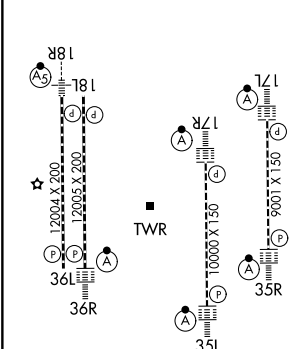


ORLANDO
112.2 ORL
Chan 59

LOCALIZER 110.95
I-ARK
Chan 46(Y)



ELEV 96	D	TDZE 90
---------	---	---------



CATEGORY	A	B	C	D
S-ILS 17L	CAT II RA 101/12 100 DA 190			
S-ILS 17L	CAT III RVR 06			

CATEGORY II & III ILS - SPECIAL AIRCREW & AIRCRAFT CERTIFICATION REQUIRED

HIRL all Rwys
REIL Rwy 36L
TDZ/CL Rwys 17L/R, 18R, 35L/R and 36R

SE-3, 16 APR 2026 to 14 MAY 2026

SE-3, 16 APR 2026 to 14 MAY 2026