

| | | |
|--|------------------------|---|
| LOC/DME I-ARK 110.95 Chan 46(Y) | APP CRS 185° | Rwy Ldg 9001 TDZE 90 Apt Elev 96 |
|--|------------------------|---|

ILS RWY 17L (SA CAT I)

ORLANDO INTL (MCO)

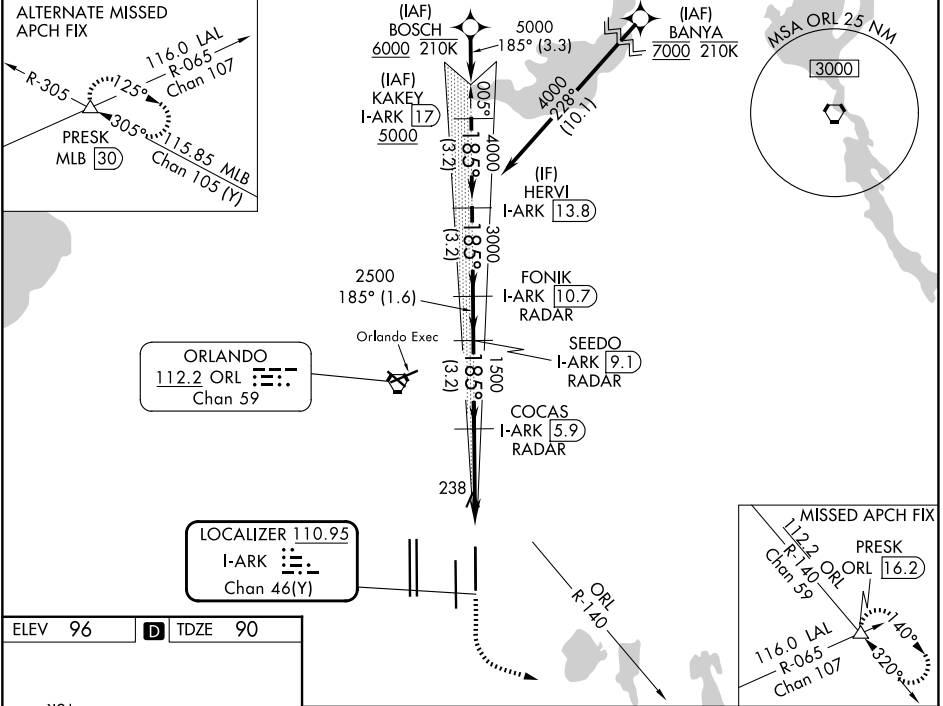
RNAV 1-DME/DME/IRU or GPS or RADAR required for procedure entry.
DME or RADAR required.

▼ Bright lights on highway midway between Rwy 17L and Rwy 17R may be mistaken for runway lights. Simultaneous approach authorized. Requires specific OPSPEC, MSPEC, or LOA approval.

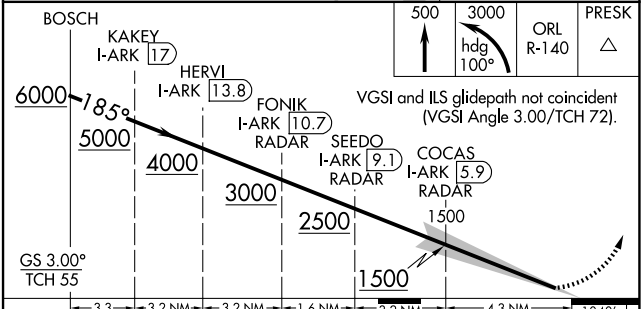
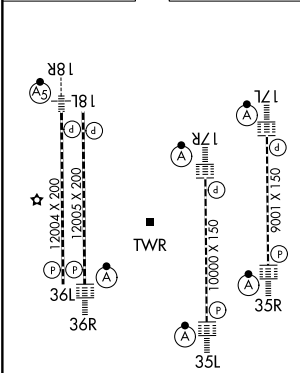
ALSF-2

MISSED APPROACH: Climb to 500 then climbing left turn to 3000 on heading 100° and ORL VORTAC R-140 to PRESK INT/ORL 16.2 DME and hold, continue climb-in-hold to 3000.

| | | | |
|-------------------------|---------------------------------------|--|---|
| D-ATIS 121.25 | ORLANDO APP CON 124.8 307.0 | ORLANDO TOWER 118.45 253.5 (17L/35R, 17R/35L) 124.3 253.5 (18L/36R, 18R/36L) | GND CON 126.4 (E) 121.8 (W) |
|-------------------------|---------------------------------------|--|---|



| | | |
|---------|---|---------|
| ELEV 96 | D | TDZE 90 |
|---------|---|---------|



| | | | | |
|--|----------------------|---|---|---|
| CATEGORY | A | B | C | D |
| S-ILS 17L | RA 145/14 150 DA 240 | | | |
| SA CATEGORY I ILS - SPECIAL AIRCREW & AIRCRAFT CERTIFICATION REQUIRED | | | | |

SE-3, 16 APR 2026 to 14 MAY 2026

SE-3, 16 APR 2026 to 14 MAY 2026