

LOC/DME I-DIZ 111.75 Chan 54(Y)	APP CRS 185°	Rwy Ldg 10000 TDZE 90 Apt Elev 96
---	------------------------	--

ILS RWY 17R (CAT II)

ORLANDO INTL (MCO)

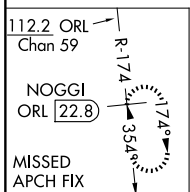
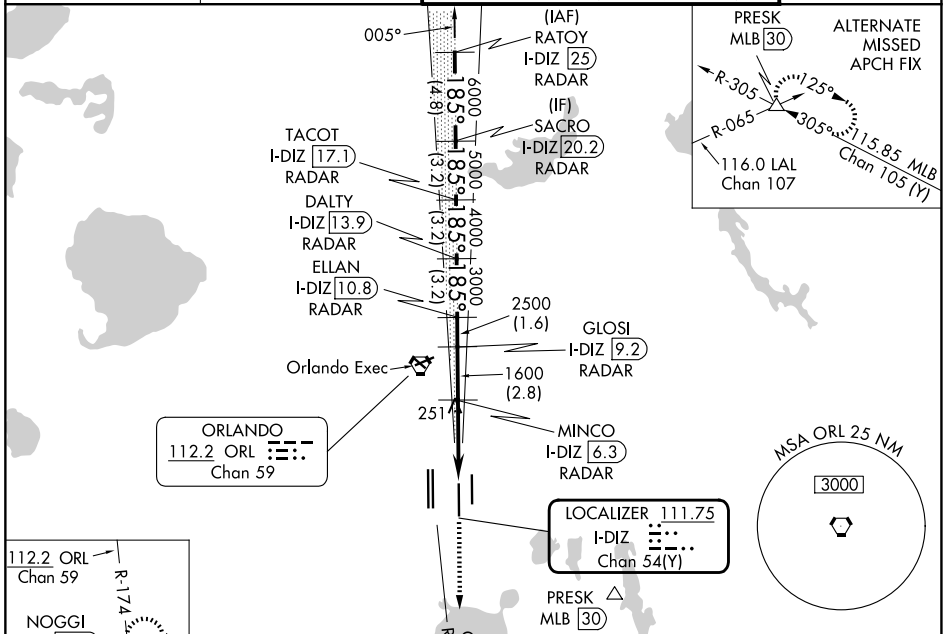
RADAR required for procedure entry, DME or RADAR required.

Simultaneous approach authorized. When using alternate missed approach, simultaneous approach NA. Bright lights on highway midway between Rwy 17L and Rwy 17R may be mistaken for runway lights.

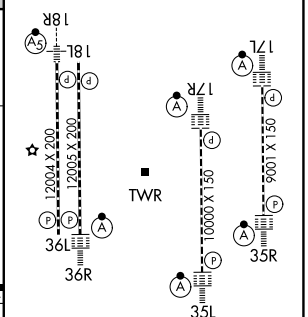
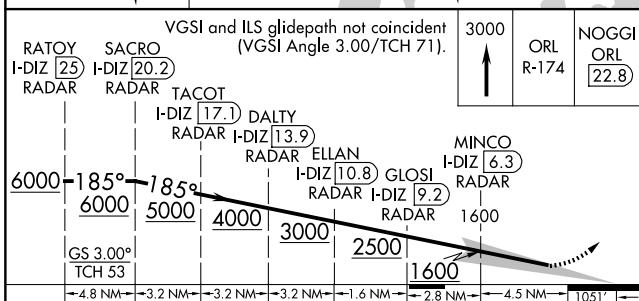
ALSF-2

MISSED APPROACH: Climb to 3000 on ORL VORTAC R-174 to NOGGI/ ORL 22.8 DME and hold.

D-ATIS 121.25	ORLANDO APP CON 124.8 307.0	ORLANDO TOWER 118.45 253.5 124.3 253.5 (17L/35R, 17R/35L) (18L/36R, 18R/36L)	GND CON 126.4 (E) 121.8 (W)
-------------------------	---------------------------------------	--	---



ELEV 96	D	TDZE 90
----------------	----------	----------------



CATEGORY	A	B	C	D
S-ILS 17R	RA 104/12 100 DA 190			

CATEGORY II ILS - SPECIAL AIRCREW & AIRCRAFT CERTIFICATION REQUIRED

HIRL all Rwys
REIL Rwy 36L
TDZ/CL Rwys 17L/R, 18R, 35L/R and 36R

SE-3, 16 APR 2026 to 14 MAY 2026

SE-3, 16 APR 2026 to 14 MAY 2026