

LOC/DME I-DDO 110.5 Chan 42	APP CRS 005°	Rwy Ldg 10000 TDZE 88 Apt Elev 96
---	------------------------	--

ILS RWY 35L (CAT II & III)

ORLANDO INTL (MCO)

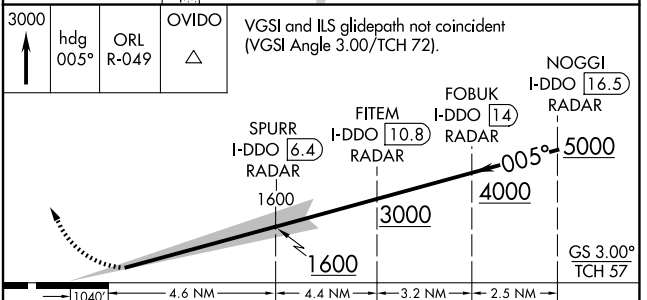
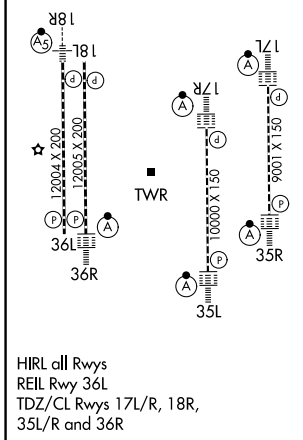
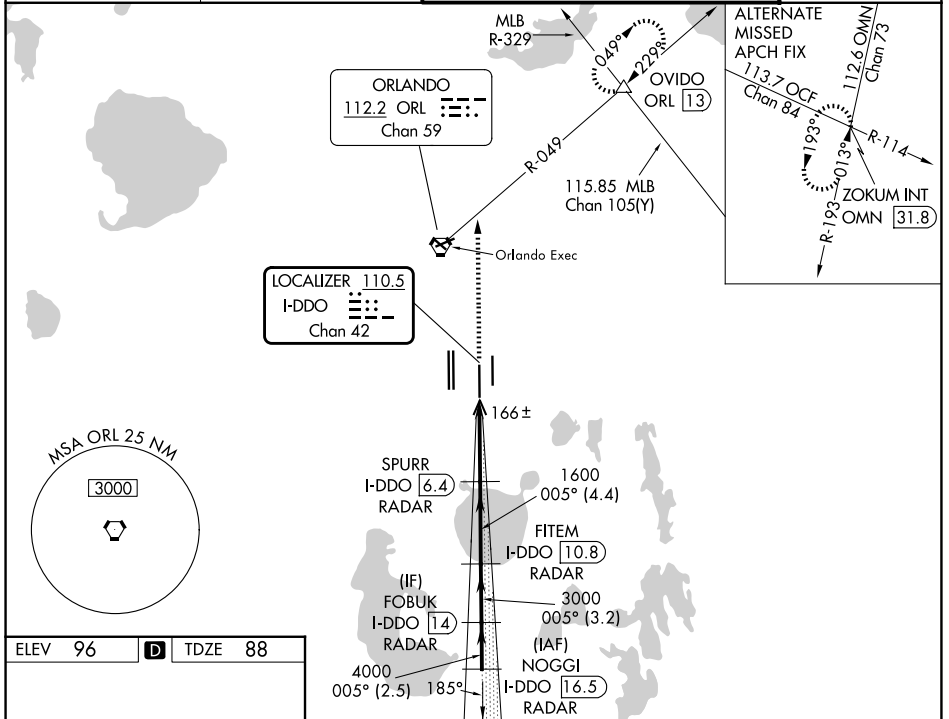
RADAR required for procedure entry. DME or RADAR required.

⚠ Bright lights on highway midway between Rwy 35L and Rwy 35R may be mistaken for runway lights. Simultaneous approach authorized. When using alternate missed approach, simultaneous approach NA.

ALSf-2

MISSED APPROACH: Climb to 3000 on heading 005° and ORL VORTAC R-049 to OVIDO INT/ORL 13 DME and hold.

D-ATIS 121.25	ORLANDO APP CON 124.8 307.0	ORLANDO TOWER 118.45 253.5 (17L/35R, 17R/35L) 124.3 253.5 (18L/36R, 18R/36L)	GND CON 126.4 (E) 121.8 (W)
-------------------------	---------------------------------------	--	---



CATEGORY	A	B	C	D
S-ILS 35L	CAT II RA 106/12 100 DA 188			
S-ILS 35L	CAT III RVR 06			

CATEGORY II & III ILS - SPECIAL AIRCREW & AIRCRAFT CERTIFICATION REQUIRED

SE-3, 16 APR 2026 to 14 MAY 2026

SE-3, 16 APR 2026 to 14 MAY 2026