

LOC/DME I-CER 111.15 Chan 48 (Y)	APP CRS 005°	Rwy Ldg 9001 TDZE 90 Apt Elev 96
--	------------------------	---

ILS RWY 35R (CAT II & III)

ORLANDO INTL (MCO)

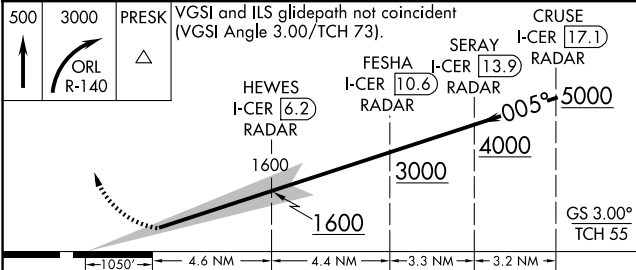
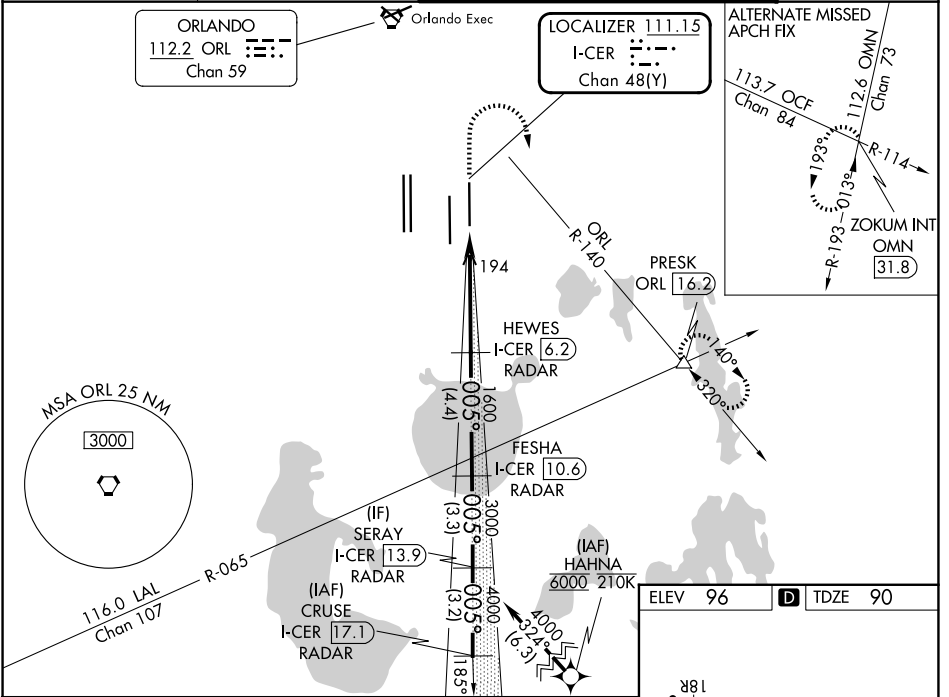
From HAHNA: RNAV 1-DME/DME/IRU or GPS required. Aircraft not DME/DME/IRU or GPS equipped-RADAR required for procedure entry.

ALSF-2

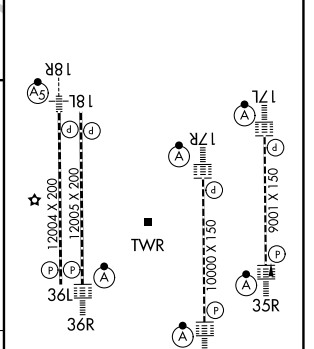
MISSED APPROACH: Climb to 500 then climbing right turn to 3000 on ORL VORTAC R-140 to PRESK INT/ ORL 16.2 DME and hold, continue climb-in-hold to 3000.

Simultaneous approach authorized. Bright lights on highway midway between Rwy 35L and Rwy 35R may be mistaken for runway lights. When using alternate missed approach, simultaneous approach NA.

D-ATIS 121.25	ORLANDO APP CON 124.8 307.0	ORLANDO TOWER 118.45 253.5 (17L/35R, 17R/35L) 124.3 253.5 (18L/36R, 18R/36L)	GND CON 126.4 (E) 121.8 (W)
-------------------------	---------------------------------------	--	---



ELEV 96	D TDZE 90
---------	------------------



CATEGORY	A	B	C	D
S-ILS 35R	CAT II RA 101/12 100 DA 190			
S-ILS 35R	CAT III RVR 06			

CATEGORY II & III ILS - SPECIAL AIRCREW & AIRCRAFT CERTIFICATION REQUIRED

HIRL all Rwy's
REIL Rwy 36L
TDZ/CL Rwy's 17L/R, 18R, 35L/R and 36R

SE-3, 16 APR 2026 to 14 MAY 2026

SE-3, 16 APR 2026 to 14 MAY 2026