

LOC/DME I-OJP <b>110.7</b> Chan <b>44</b>	APP CRS <b>005°</b>	Rwy Ldg <b>11601</b> TDZE <b>92</b> Apt Elev <b>96</b>
-------------------------------------------------	------------------------	--------------------------------------------------------------

# ILS RWY 36R (CAT II & III)

ORLANDO INTL (MCO)

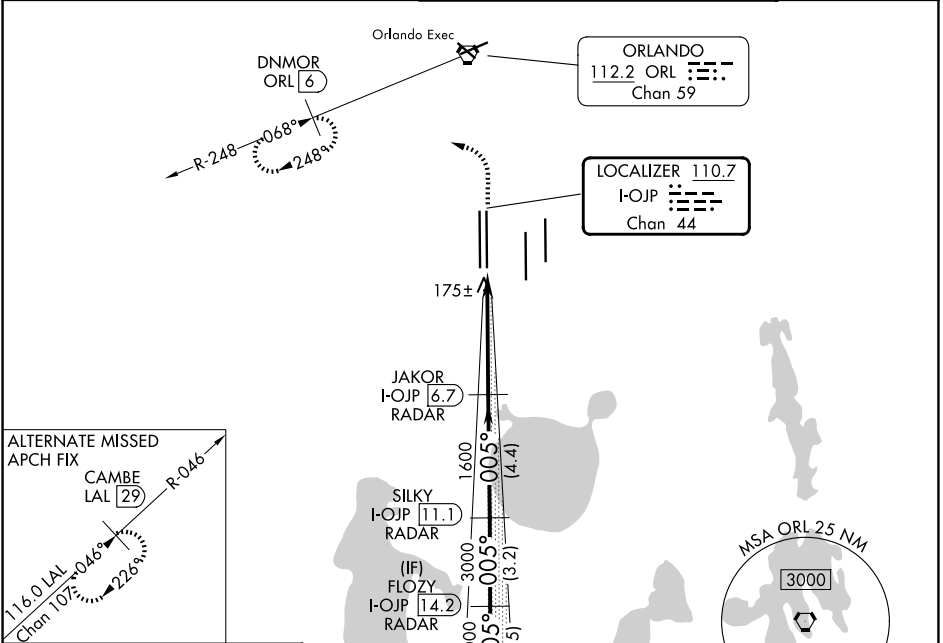
RADAR required for procedure entry. DME or RADAR required.



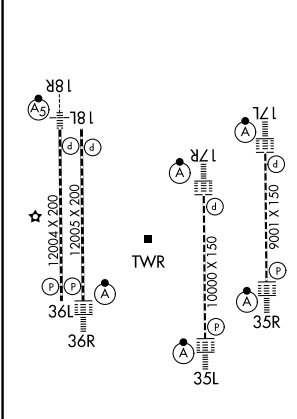
MISSED APPROACH: Climb to 500 then climbing left turn to 3000 on heading 309° and ORL R-248 to DNMOR/ORL 6 DME and hold, continue climb-in-hold to 3000.

Simultaneous approach authorized.

D-ATIS <b>121.25</b>	ORLANDO APP CON <b>124.8 307.0</b>	ORLANDO TOWER <b>118.45 253.5</b> (17L/35R, 17R/35L) <b>124.3 253.5</b> (18L/36R, 18R/36L)	GND CON <b>126.4</b> (E) <b>121.8</b> (W)
-------------------------	---------------------------------------	--------------------------------------------------------------------------------------------------	-------------------------------------------------



ELEV 96	<b>D</b>	TDZE 92
---------	----------	---------



500	3000	hdg 309° ORL R-248	DNMOR ORL 6	VGSI and ILS glidepath not coincident (VGSI Angle 3.00/TCH 70).	TRAMP I-OJP 16.8 RADAR
JAKOR I-OJP 6.7 RADAR	SILKY I-OJP 11.1 RADAR	FLOZY I-OJP 14.2 RADAR	18.5°	5000	
1600	3000	4000	1600	GS 3.00° TCH 56	

CATEGORY	A	B	C	D
S-ILS 36R	CAT II RA 106/12 100 DA 192			
S-ILS 36R	CAT III RVR 06			

**CATEGORY II & III ILS - SPECIAL AIRCREW & AIRCRAFT CERTIFICATION REQUIRED**

HIRL all Rws REIL Rwy 36L TDZ/CL Rws 17L/R, 18R, 35L/R, and 36R