

LOC/DME I-OJP 110.7 Chan 44	APP CRS 005°	Rwy Ldg 11601 TDZE 92 Apt Elev 96
---	------------------------	--

ILS RWY 36R (SA CAT I)

ORLANDO INTL (MCO)

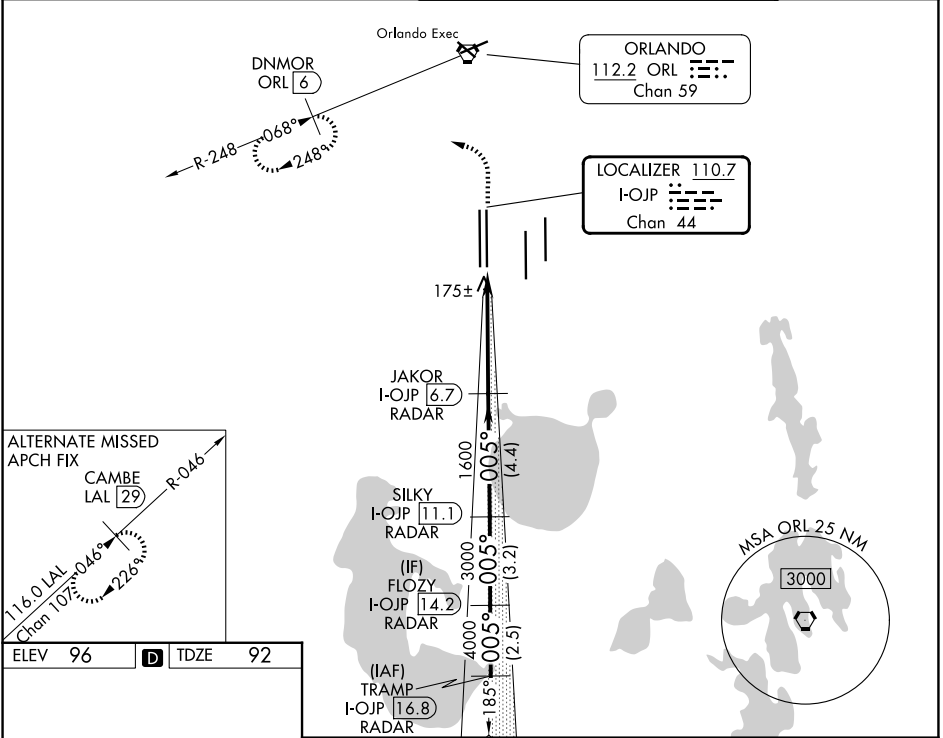
RADAR required for procedure entry. DME or RADAR required.

ALSF-2

MISSED APPROACH: Climb to 500 then climbing left turn to 3000 on heading 309° and ORL R-248 to DNMOR/ORL 6 DME and hold, continue climb-in-hold to 3000.

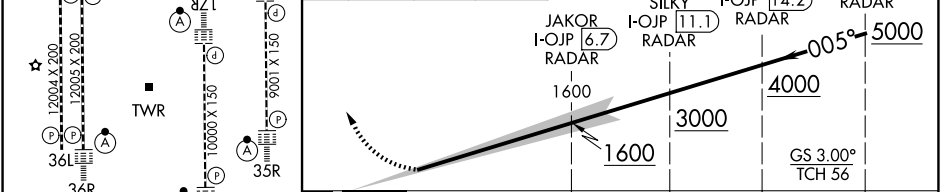
Simultaneous approach authorized.
Requires specific OPSPEC, MSPEC or LOA approval.

D-ATIS 121.25	ORLANDO APP CON 124.8 307.0	ORLANDO TOWER 118.45 253.5 (17L/35R, 17R/35L) 124.3 253.5 (18L/36R, 18R/36L)	GND CON 126.4 (E) 121.8 (W)
-------------------------	---------------------------------------	--	---



500 3000 hdg 309° ORL R-248 DNMOR ORL 6

VGSI and ILS glidepath not coincident (VGSI Angle 3.00/TCH 70).



CATEGORY	A	B	C	D
S-ILS 36R	RA 158/14 150 DA 242			

HIRL all Rwy REIL Rwy 36L TDZ/CL Rwys 17L/R, 18R, 35L/R, and 36R

SA CATEGORY I ILS - SPECIAL AIRCREW & AIRCRAFT CERTIFICATION REQUIRED

SE-3, 16 APR 2026 to 14 MAY 2026

SE-3, 16 APR 2026 to 14 MAY 2026