

ILS or LOC RWY 17R

ORLANDO INTL (MCO)

LOC/DME I-DIZ 111.75 Chan 54(Y)	APP CRS 185°	Rwy Ldg 10000 TDZE 90 Apt Elev 96
---	------------------------	--

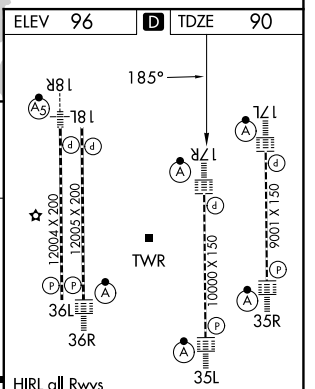
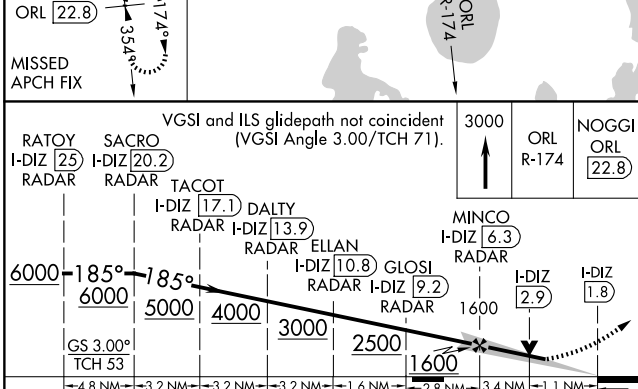
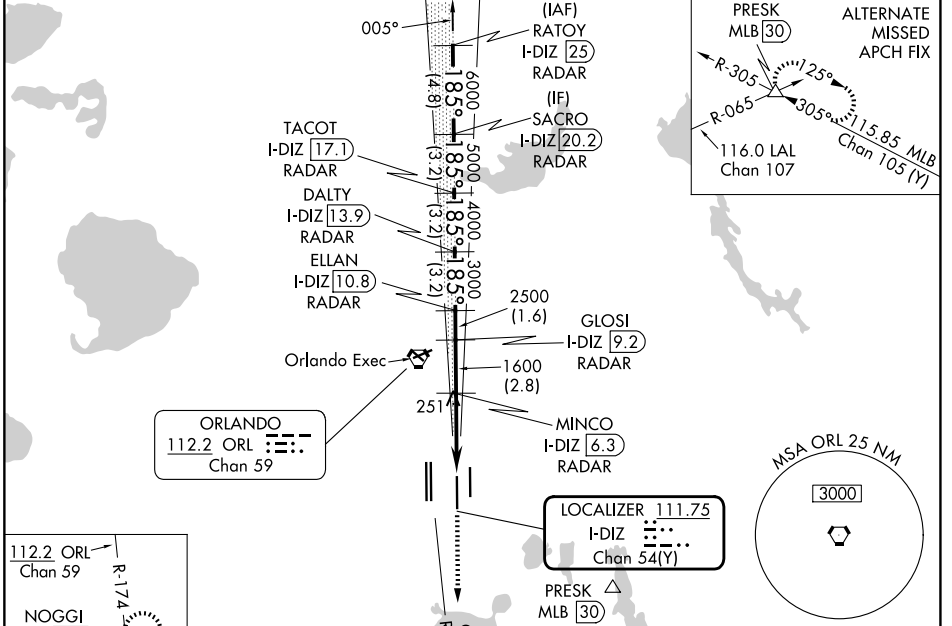
RADAR required for procedure entry. DME or RADAR required.

Simultaneous approach authorized. When using alternate missed approach, simultaneous approach NA. Bright lights on highway midway between Rwy 17L and Rwy 17R may be mistaken for runway lights.

ALSF-2

MISSED APPROACH: Climb to 3000 on ORL VORTAC R-174 to NOGGI/ ORL 22.8 DME and hold.

D-ATIS 121.25	ORLANDO APP CON 124.8 307.0	ORLANDO TOWER 118.45 253.5 (17L/35R, 17R/35L) 124.3 253.5 (18L/36R, 18R/36L)	GND CON 126.4 (E) 121.8 (W)
-------------------------	---------------------------------------	--	---



CATEGORY	A	B	C	D
S-ILS 17R	290/18 200 (200-1/2)			
S-LOC 17R	520/24 430 (500-1/2)	520/40 430 (500-3/4)		
CIRCLING	740-1 644 (700-1)	740-1 1/4 644 (700-1 1/4)	740-2 644 (700-2)	

SE-3, 16 APR 2026 to 14 MAY 2026

SE-3, 16 APR 2026 to 14 MAY 2026