

ILS or LOC RWY 18R

ORLANDO INTL (MCO)

LOC/DME I-TFE 111.9 Chan 56	APP CRS 185°	Rwy Ldg 12004 TDZE 94 Apt Elev 96
---	------------------------	--

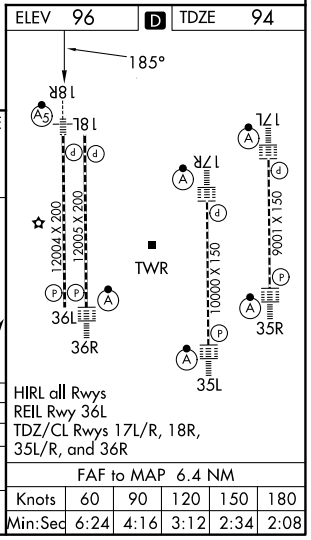
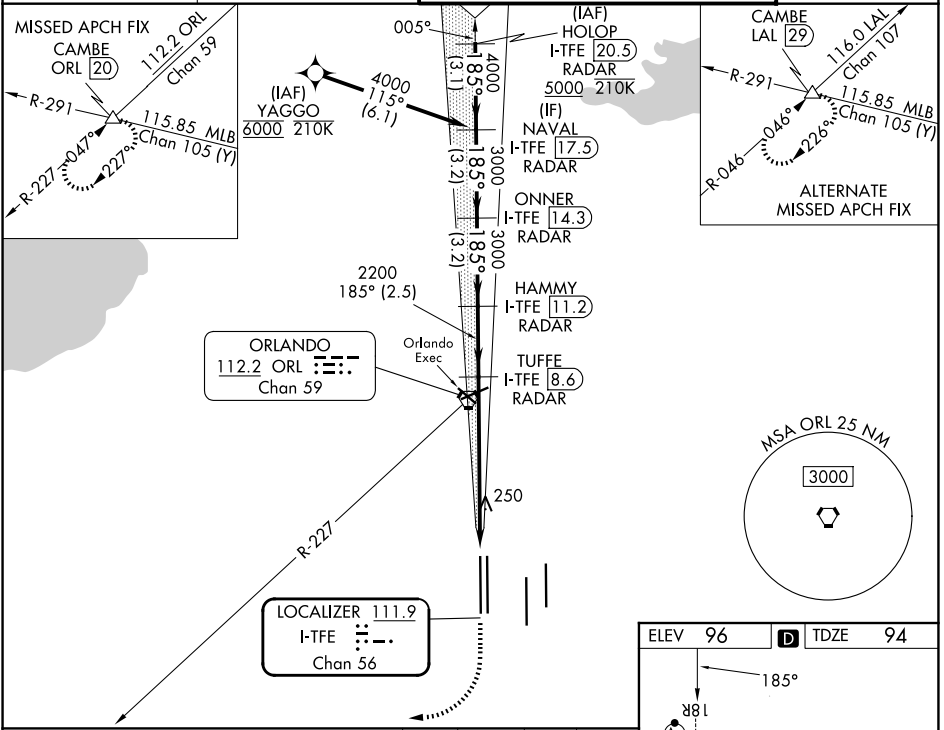
DME or RADAR required.
RNP APCH-GPS. From YAGGO.

Simultaneous approach authorized.

MALS R

MISSED APPROACH: Climb to 500 then climbing right turn to 4000 on heading 270° and on ORL VORTAC R-227 to CAMBE INT/ORL 20 DME and hold, continue climb-in-hold to 4000.

D-ATIS 121.25	ORLANDO APP CON 124.8 307.0	ORLANDO TOWER 118.45 253.5 (17L/35R, 17R/35L) 124.3 253.5 (18L/36R, 18R/36L)	GND CON 126.4 (E) 121.8 (W)
-------------------------	---------------------------------------	--	---



VGSi and ILS glidepath not coincident (VGSi Angle 3.00/TCH 71).		500	4000	CAMBE
HOLOP I-TFE [20.5] NAVAL I-TFE [17.5]		hdg 270°		ORL R-227
5000 — 185°		ONNER I-TFE [14.3]	HAMMY I-TFE [11.2]	TUFFE I-TFE [8.6]
GS 3.00° TCH 55		3000	3000	I-TFE [3.4]
— 3.1 NM — 3.2 NM — 3.2 NM — 2.5 NM — 1.2 NM —		2200	I-TFE [2.2]	
CATEGORY	A	B	C	D
S-ILS 18R	294/18 200 (200-1/2)			
S-LOC 18R	540/24	446 (500-1/2)	540/45	446 (500-7/8)
CIRCLING	740-1	644 (700-1)	740-1 3/4	740-2
			644 (700-1 3/4)	644 (700-2)
HIRL all Rwys REIL Rwy 36L TDZ/CL Rwys 17L/R, 18R, 35L/R, and 36R				
FAF to MAP 6.4 NM				
Knots	60	90	120	150
Min:Sec	6:24	4:16	3:12	2:34

SE-3, 16 APR 2026 to 14 MAY 2026

SE-3, 16 APR 2026 to 14 MAY 2026