

LOC/DME I-DDO 110.5 Chan 42	APP CRS 005°	Rwy Ldg TDZE 88 Apt Elev 96
--	------------------------	---

ILS or LOC RWY 35L

ORLANDO INTL (MCO)

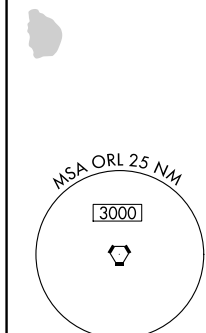
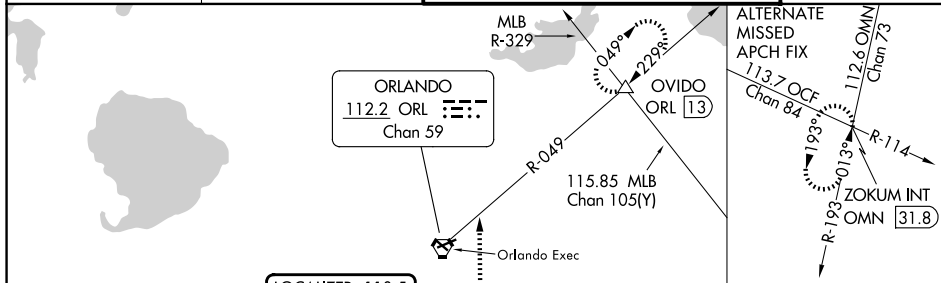
RADAR required for procedure entry. DME or RADAR required.

▼ Bright lights on highway midway between Rwy 35L and Rwy 35R may be mistaken for runway lights. Simultaneous approach authorized. When using alternate missed approach, simultaneous approach NA.

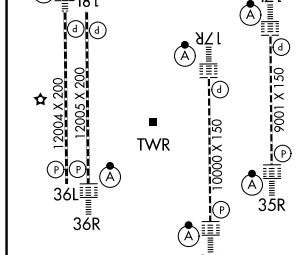
ALSF-2

MISSED APPROACH: Climb to 3000 on heading 005° and ORL VORTAC R-049 to OVIDO INT/ORL 13 DME and hold.

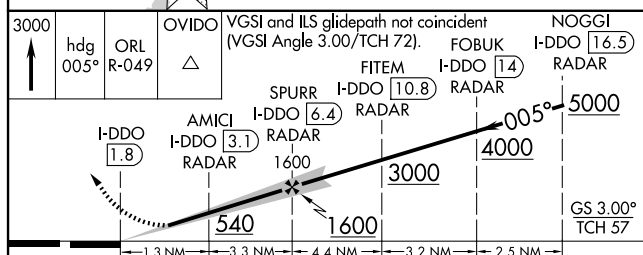
D-ATIS 121.25	ORLANDO APP CON 124.8 307.0	ORLANDO TOWER 118.45 253.5 (17L/35R, 17R/35L) 124.3 253.5 (18L/36R, 18R/36L)	GND CON 126.4 (E) 121.8 (W)
-------------------------	---------------------------------------	--	---



ELEV 96	D	TDZE 88
---------	----------	---------



FAF to MAP 4.6 NM					
Knots	60	90	120	150	180
Min:Sec	4:36	3:04	2:18	1:50	1:32



CATEGORY	A	B	C	D
S-ILS 35L	288/18 200 (200-½)			
S-LOC 35L	420/24	332 (400-½)	420/26	332 (400-½)
CIRCLING	740-1	644 (700-1)	740-1¾ 644 (700-1¾)	740-2 644 (700-2)

SE-3, 16 APR 2026 to 14 MAY 2026

SE-3, 16 APR 2026 to 14 MAY 2026